

PRODUCT DATA SHEET

3831v.67

Receptacles – 3831 V Ms sn 6.3x0.8/1



Product Overview

SKU	3831v.67
Part description	Receptacles
Part designation	3831 V Ms sn 6.3x0.8/1

Material

Component	Brass CuZn30
Surface	Tin plated

Technical Details

Net weight kg/1000	.689
Conductor cross-section	0.5 – 1.0mm ² / AWG 20-18
Max. Temp. [C°]	120

Max. rated current

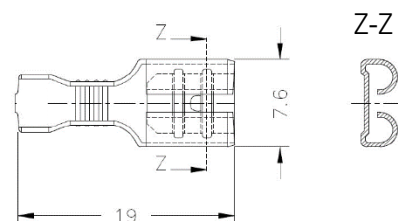
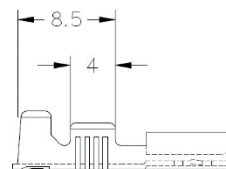
Wire section 0.50 mm ²	8A
Wire section 0.75 mm ²	10A
Wire section 1.00 mm ²	12A

Marking

RoHS, REACH, CRMT	compliant
DIN	46247/T3

Dimensions

Alternative SKU with pre-rolled crimp zone: 3831n.6*



(Dimensions correspond to the dimensions in the bare condition)

© 2020 / Vogt AG Verbindungstechnik

This leaflet is for general information about the base material only and is not subject to revision.

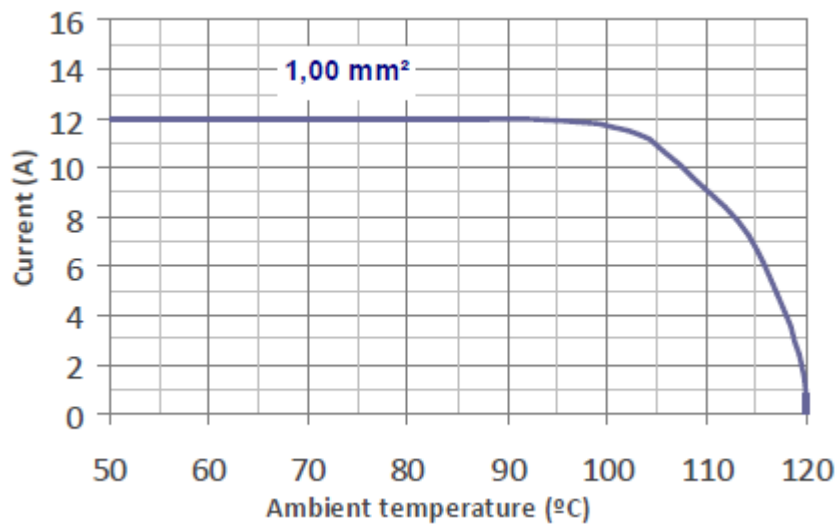
The data given are no warranty that the product is of a specified quality and they cannot replace customer's own test and release regarding the application of the manufactured component.

PRODUCT DATA SHEET

3831v.67

Receptacles – 3831 V Ms sn 6.3x0.8/1

Derating curve



© 2020 / Vogt AG Verbindungstechnik

This leaflet is for general information about the base material only and is not subject to revision.

The data given are no warranty that the product is of a specified quality and they cannot replace customer's own test and release regarding the application of the manufactured component.