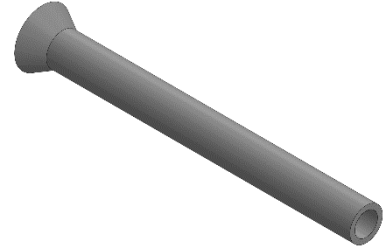


# PRODUCT DATA SHEET

440010.41

End-sleeves uninsulated – 4400/10 Cu ag - 0.1 x 10



## Product Overview

SKU	440010.41
Part description	End-sleeves uninsulated
Part designation	4400/10 Cu ag - 0.1 x 10

### Material

Component	Copper
Surface	silver-plated

### Technical Details

Net weight kg/1000	0.036
Conductor cross-section	0.10 – 0.30mm <sup>2</sup> / AWG 26 – 24

### Dimensions

D1 [mm]	0.70
D2 [mm]	1.70
L1 [mm]	10.00
S1 [mm]	0.15

