

**Industrial Ethernet  
IE-XM-RJ45/IDC**

**Weidmüller Interface GmbH & Co. KG**  
Klingenbergstraße 16  
D-32758 Detmold  
Germany  
Fon: +49 5231 14-0  
Fax: +49 5231 14-292083  
www.weidmueller.com



Mounting rail outlet, RJ45 module design according to IEC 60603-7-51, for wires with diameters up to 1.6 mm

**General ordering data**

Type	IE-XM-RJ45/IDC
Order No.	<a href="#">8808360000</a>
Version	Terminal rail outlet, RJ45 module, IP20, Cat.6 <sub>A</sub> / Class E <sub>A</sub> (ISO/IEC 11801 2010)
GTIN (EAN)	4032248505944
Qty.	1 pc(s).

**Industrial Ethernet  
IE-XM-RJ45/IDC**

**Weidmüller Interface GmbH & Co. KG**  
 Klingenbergstraße 16  
 D-32758 Detmold  
 Germany  
 Fon: +49 5231 14-0  
 Fax: +49 5231 14-292083  
 www.weidmueller.com

**Technical data****Dimensions and weights**

Net weight	53 g
------------	------

**Temperatures**

Operating temperature, max.	70 °C	Operating temperature, min.	-25 °C
Operating temperature	-25 °C...70 °C	Storage temperature	
Installation temperature			

**Environmental Product Compliance**

REACH SVHC	Lead 7439-92-1
------------	----------------

**General data**

Connection 1	RJ45	Connection 2	IDC
Description of article		Configuration	1 TE pitch dimension acc. to DIN 43880. insta-compatible Installation flange with mounting frame
Wiring	RJ45 module EIA/TIA T568 A, EIA/TIA T568 B, PROFINET	Colour	Light Grey
Housing main material	PA 66, UL 94: V-0	Insulation cross-section, min.	0.7 mm
Insulation cross-section, max.	1.6 mm	Category	Cat.6 <sub>A</sub> / Class E <sub>A</sub> (ISO/IEC 11801 2010)
Connection diameter, solid	0.4...0.64 mm	Conductor connection cross-section, solid (AWG)	AWG 24...AWG 22
Connection diameter, flexible	0.48...0.64 mm	Conductor connection cross-section, flexible (AWG)	AWG 26...AWG 22
Type of mounting	TS 35	Protection degree	IP20
Plugging cycles	750		

**Electrical properties**

Contact resistance	≤ 20 mΩ	Current-carrying capacity at 50 °C	1 A
Dielectric strength, contact / contact	≥ 1000 V DC	Dielectric strength, contact / shield	≥ 1500 V DC
Insulation strength	500 MΩ	PoE / PoE+	conforming to IEEE 802.3at

**Standards**

Connector standard	IEC 60603-7-5	Certificate No. (GERMLLOYD)	33451-06
Certificate no. (cULus)	E316369		

**Classifications**

ETIM 3.0	EC001264	ETIM 4.0	EC001264
ETIM 5.0	EC001264	ETIM 6.0	EC000313
UNSPSC	43-17-27-10	eClass 5.1	27-25-05-04
eClass 6.2	27-25-05-04	eClass 7.1	27-25-05-04
eClass 8.1	19-17-01-25	eClass 9.0	27-44-03-20
eClass 9.1	19-17-01-25		

**Data sheet**

**Industrial Ethernet  
IE-XM-RJ45/IDC**

**Weidmüller Interface GmbH & Co. KG**  
 Klingenbergstraße 16  
 D-32758 Detmold  
 Germany  
 Fon: +49 5231 14-0  
 Fax: +49 5231 14-292083  
 www.weidmueller.com

**Technical data**

**Approvals**

Approvals



ROHS Conform

**Downloads**

Approval/Certificate/Document of Conformity	<a href="#">GOST Approval</a> <a href="#">Germanischer Lloyd</a> <a href="#">DUXR.E316369</a>
Brochure/Catalogue	<a href="#">CAT 9 IETH 15/16 EN</a> <a href="#">FL FIELDWIRING EN</a> <a href="#">PI PROFINET CABLING EN</a>
Engineering Data	<a href="#">EPLAN, WSCAD, Zuken E3.S</a>
User Documentation	<a href="#">MAN IE GUIDE DE</a> <a href="#">MAN IE GUIDE EN</a>

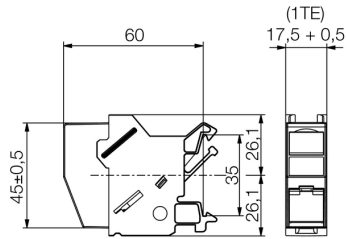
**Data sheet**

**Industrial Ethernet  
IE-XM-RJ45/IDC**

**Weidmüller Interface GmbH & Co. KG**  
Klingenbergstraße 16  
D-32758 Detmold  
Germany  
Fon: +49 5231 14-0  
Fax: +49 5231 14-292083  
www.weidmueller.com

**Drawings**

**Dimensioned drawing**



**Product image**

