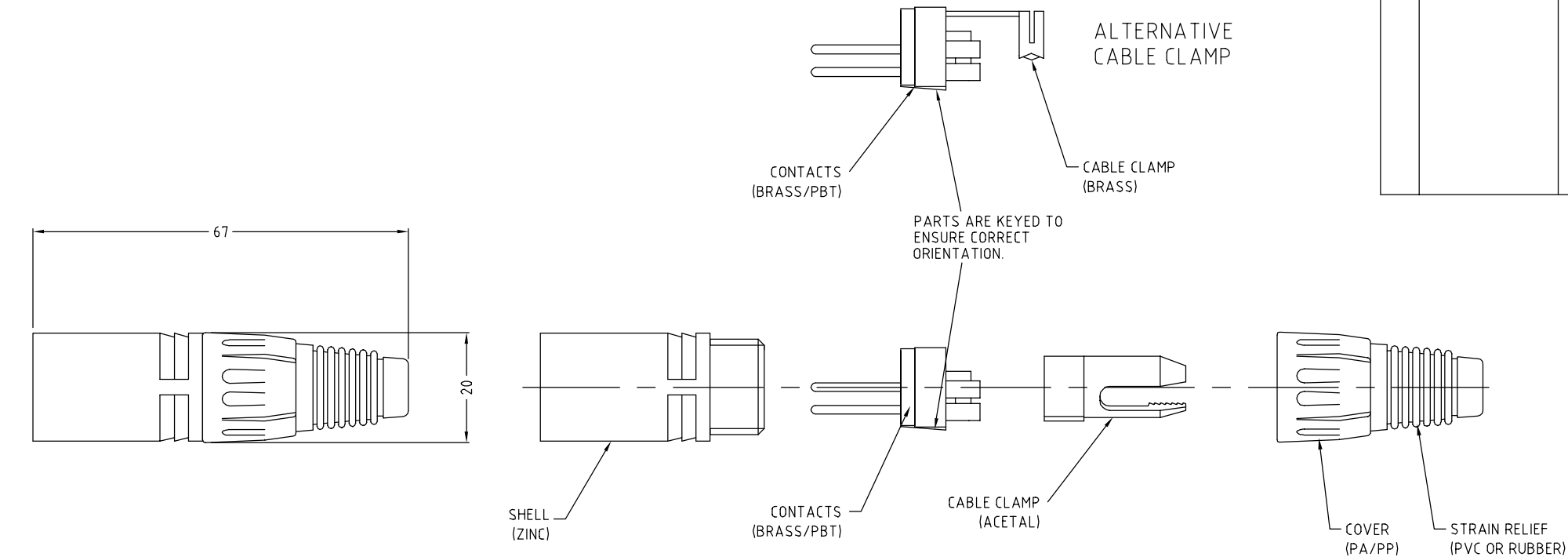


ISS.	AMEND	DATE
1	1st DRAWN	09/07/2003
2	SPEC CHANGES	04/03/2016



SPECIFICATION						
MODEL	MAX CURRENT @25°C (A)	MAX CABLE (mm²)	C (Pf)	CONTACT RESISTANCE (mΩ)	INSULATION RESISTANCE (MΩ)	WITHSTAND VOLTAGE (V)
FC6130	16	2.5	<4	<5	>5000	1400
FC6155	10	1.0	<7	<7	>5000	1400
FC6160	7.5	1.0	<7	<7	>5000	1400


**RoHS**  
COMPLIANT

TOLERANCE  
NO DEC. PLACE ±  
1 DEC. PLACE ±  
2 DEC. PLACE ±  
HOLE Ø ±  
ANGLES ±  
UNLESS OTHERWISE STATED

DO NOT SCALE

**Cliff Electronic Components Ltd.**  
76 Holmesthorpe Avenue, Holmesthorpe Industrial Estate,  
Redhill, Surrey, RH1 2PF, England, UK  
Tel: 01737-771375 Fax: 01737-766012 Website: www.cliffuk.co.uk

THE CONTENTS OF THIS DOCUMENT MUST NOT BE COPIED OR DISCLOSED TO A 3rd PARTY WITHOUT WRITTEN PERMISSION OF CLIFF UK. © 2003

DIMENSIONS IN MILLIMETERS UNLESS OTHERWISE STATED. WORK TO DIMENSIONS. REMOVE ALL BURRS. IF IN DOUBT ASK.			3rd ANGLE PROJECTION: 		DO NOT SCALE
MATERIAL: COMPOSITE / CONTACTS SILVER PLATED			TITLE: XLR PLUG (MALE) xAPM/M		
FINISH: CLEAN			DRWG. No. FC 6130		
DRAWN: CAMJ		APPROVED: RWT	FORM: A4DRWGH		