

Material & Finish

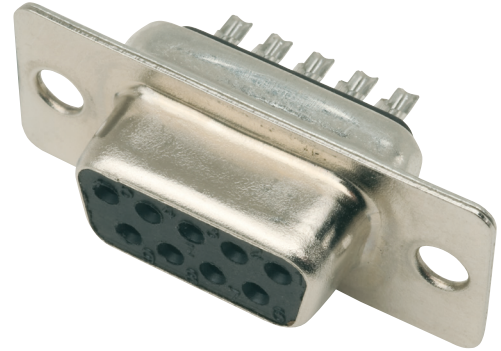
Insulator material: Thermoplastic
Flame retardant to UL94V-0
Contact material: Copper alloy
Shell material: Tin plated steel

Electrical Characteristics

Contact current rating: 5A
Dialectric withstand voltage: 250V AC max.
Contact resistance: 20mΩ max. initial
Insulation resistance: 1000MΩ min.

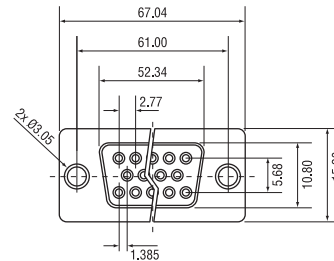
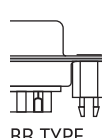
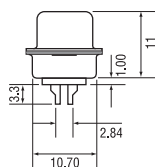
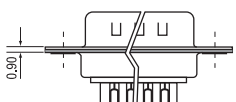
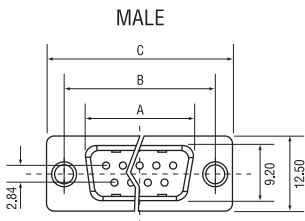
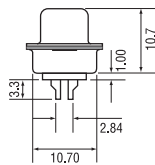
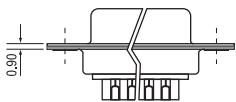
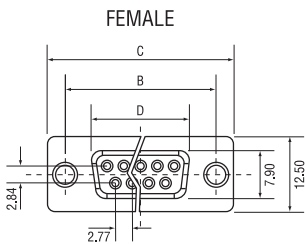
Environmental Characteristics

Temperature Range: -45°C to +105°C
Operating temperature: 0°C to +85°C

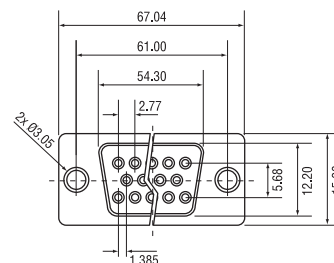


Order code	Type	A ±0.2	B ±0.2	C ±0.3	D
15-0200	9 Way Male	17.90	24.99	30.80	16.33
15-0203	9 Way Female	17.90	24.99	30.80	16.33
15-0201	15 Way Male	26.50	33.32	39.14	24.66
15-0204	15 Way Female	26.50	33.32	39.14	24.66
15-0202	25 Way Male	40.00	47.04	53.04	38.38
15-0205	25 Way Female	40.00	47.04	53.04	38.38

General Tolerance		Angle Tolerance	
x.	±0.60	x.	±5%
.x	±0.38	.x	±3%
.xx	±0.25	.xx	±2%



50pin Female figure



50pin Male figure

Measurements are in mm unless stated otherwise.

For further information on pricing, delivery, and long-term stock agreements please get in touch with your local business development contact. Telephone our main office on 01206 751166 or email Sales@Rapiddonline.com.

The information contained in this datasheet is subject to change without notice and replaces all data sheets previously supplied.

