



DATA SHEET

SEPTEMBER 2017

CRADLE FOR VELLEMAN WATCH

ORDER CODE: K1201

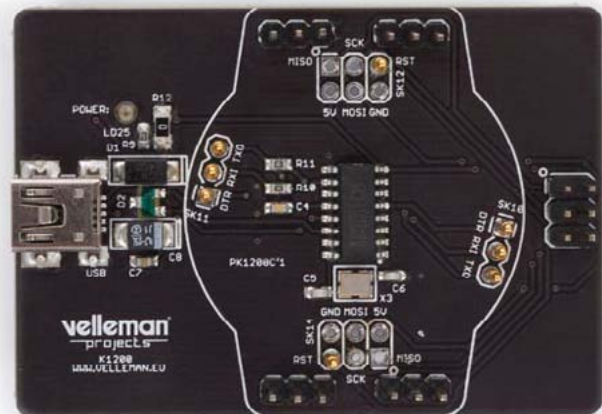
This USB-to-serial converter was designed to reprogram the Arduino compatible Velleman Watch (K1200).

FEATURES

- power indication LED
- CH340G USB-to-serial converter
- ICSP programming pins available
- made for the Velleman Watch (K1200)
- USB-mini connector
- Arduino compatible
- USB A to mini B cable included

SPECIFICATIONS

- dimensions: 60 x 43 mm



WEARABLE &
ARDUINO COMPATIBLE
WATCH!

