

# Panel Mount Pushbutton

## Double Pole E7 F7 series



### Features

- Choice of Momentary, Push-Pull (reset) and Cheat Interlock
- Long life coil spring snap action mechanism
- Agency approved extended life versions available
- Snap in mounting
- ENEC available on select models
- **Cadmium** contacts for high load requirements

### Standard Parts

|           |           |           |           |           |           |
|-----------|-----------|-----------|-----------|-----------|-----------|
| 0E78-00A0 | 0E78-30A0 | 0E78-40A0 | 0E79-00A0 | 0E79-30A0 | 0E79-40A0 |
| 0F79-00A0 | 0F79-30A0 | 0F79-66A0 |           |           |           |

Notes:  
Part numbers with a leading 0 and a trailing 0 are functionally no different than without a leading / trailing 0.

### Electrical Specifications – Contact Ratings

| Switch Series | According to EN61058-1                 |                  | According to UL1054                     |                  |
|---------------|--|------------------|---|------------------|
|               | Nominal Load                           | Operating Cycles | Nominal Load                            | Operating cycles |
| 0E75          | N/A                                    | N/A              | 16 A, 125/250 VAC; 1/3 HP; 125/250 VAC  | 6,000 *          |
| 0E77          | N/A                                    | N/A              | 0.1 A 125 VAC; 10 A 1/3 HP, 125/250 VAC | 6,000 *          |
| 0F77          | 0.1(0.05) A, 125 VAC; 10(4) A, 250 VAC | 50,000           |   |                  |
| 0E78          | N/A                                    | N/A              | 0.1 A, 125 VAC                          | 6,000*           |
| 0F78          | 0.1(0.05)A, 125 VAC                    | 50,000           |   |                  |
| 0E79          | N/A                                    | N/A              | 10 A, 125/250 VAC; 1/3 HP, 125/250 VAC  | 6,000*           |
| 0F79          | 10(4)A, 250 VAC                        | 50,000           |   |                  |

\*Extended life UL versions available. Contact factory for more information. Special part number required.

### Environmental and Mechanical Specifications

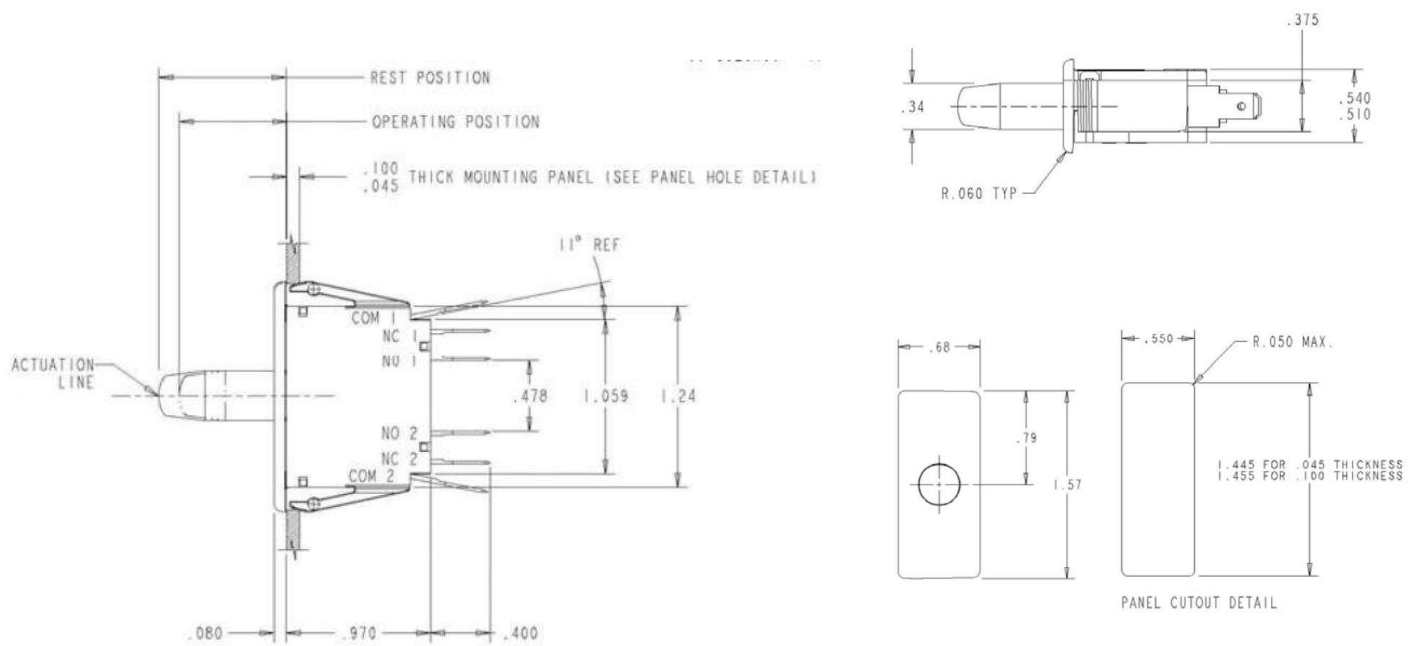
|                     |   |
|---------------------|---|
| Operating force     | 680 - 921 grams   |
| Temperature range   | -40 °C to 85 °C   |
| Protection class    | IP40  |
| Terminal dimensions | Up to 10 A: 4,8 mm x 0,5 mm or 4,8 mm x 0,8 mm; 16 A: 6,3 mm x 0,8 mm |

### Material Specifications

|                 |                          |
|-----------------|--------------------------|
| Case            | Thermoplastic Polyester  |
| Actuator button | Thermoplastic Acetal     |
| Terminals       | Brass (Common Ag plated) |
| Moving blade    | Beryllium Copper         |
| Spring          | Stainless Steel          |
| Contacts        | Silver Alloy, Gold Alloy |

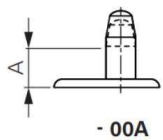


## Dimensions (mm) and terminal configurations



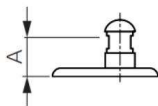
## Button details

### Actuator (function)



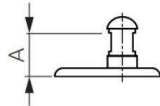
- 00A

Basic momentary  
(Makes contact while actuated)



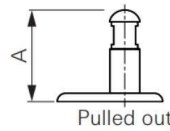
- 20A

Push-pull (Push:  
makes contact, Pull:  
reset position)



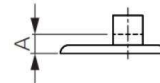
- 30A  
- 66A

Momentary  
(If pushed: normal  
pushbutton function)



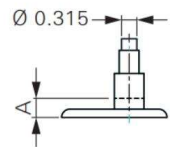
Pulled out  
- 30A

Cheat interlock  
(If pulled: permanent  
contact function)



- 40A

Short button momentary  
(Makes contact while being actuated)



- 50A

Momentary – for auxiliary  
button (Makes contact while being actuated)