

**PCB Test-Point Technical Specification Data-Sheet**

**Material:**

**Bead:** Boro Silicate Sintered Glass

**Tag:** Phosphor Bronze BS 2873 Solder Tinned - RoHS Compliant

Glass Bead								
COEFFICIENT OF THERMAL EXPANSION	VISCOSITY (poise)			Specific Gravity	Log <sub>10</sub> DC Resistivity (Ohm/cm)			Dielectric Properties
51 X 10 <sup>-7</sup> cm/cm/°C	@490°C	@530°C	@740°C	2.35	@25°C	@250°C	350°C	Constant (1Mhz @20°C) = 5.2 Loss Angle (tan δ - 1 MHz @ 20°C) = .0024
	10 <sup>14.6</sup>	10 <sup>13</sup>	10 <sup>7.6</sup>		15.7	8.8	7.2	

Dimensions See Figure 1 on Page 2	Type 100 (Large)		Type 200 (Small)		Type 300 (Long Legged)	
	mm	inches	mm	inches	mm	inches
A	2.84-3.10	0.112-0.122	3.05-3.30	0.120-0.130	2.84-3.10	0.112-0.122
B	2.03-2.16	0.080-0.085	1.30-1.50	0.051-0.059	2.03-2.16	0.080-0.085
C	2.87-3.12	0.113-0.123	2.21-2.47	0.087-0.097	2.87-3.12	0.113-0.123
D	1.50-1.75	0.059-0.069	1.07-1.32	0.042-0.052	1.50-1.75	0.059-0.069
E	0.8	0.032	0.5	0.020	0.8	0.032
F	2.78	7/64	2.78	7/64	3.57	9/64
Board Size	1.59	1/16	1.59	1/16	2.38	3/32
Hole Size	1.32	0.052	1.0	0.40	1.32	0.052
Hole Centre	3.20	0.125	2.5	0.100	3.20	0.125
Order Code						
White	101		201		301	
Yellow	102		202		302	
Black	103		203		303	
Brown	104		204		304	
Blue	105		205		305	
Pink	106		206		306	
Red	107		207		307	
Green	108		208		308	

ESTABLISHED 1790

**WILLIAM HUGHES**  
LIMITED

PCB Test-Point Technical Specification Data-Sheet

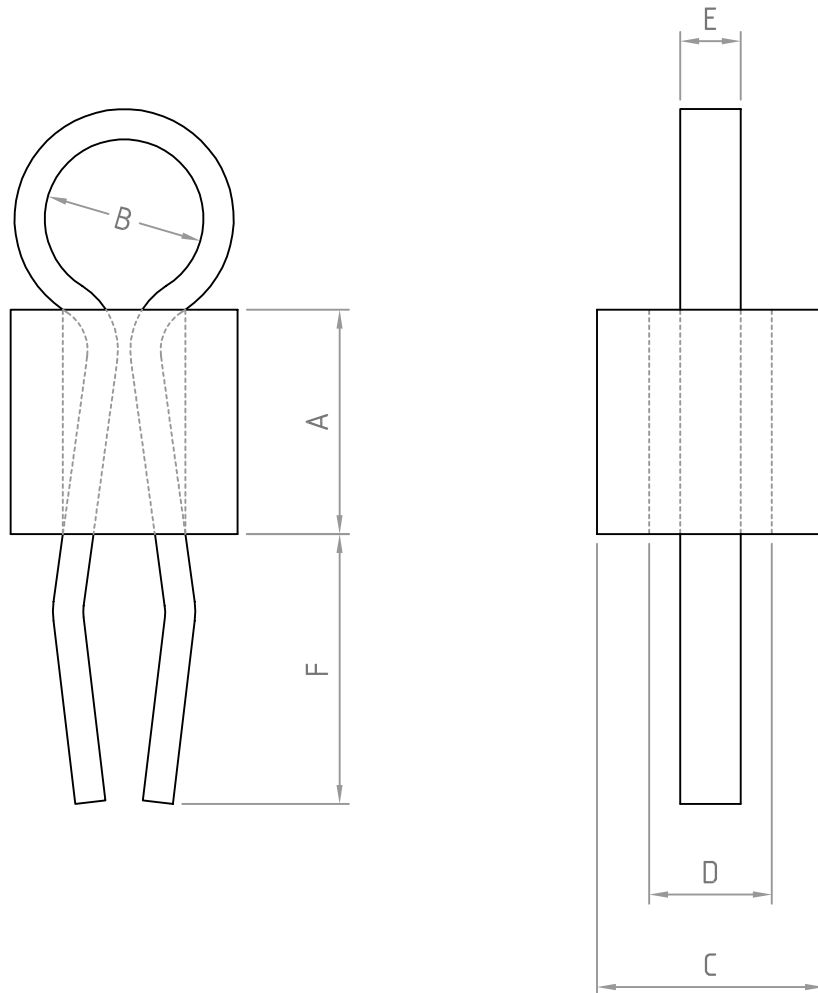


Fig. 1 (Scale 10:1)