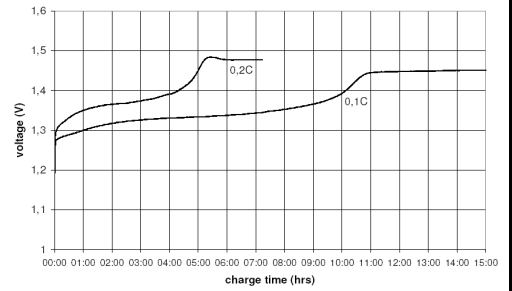


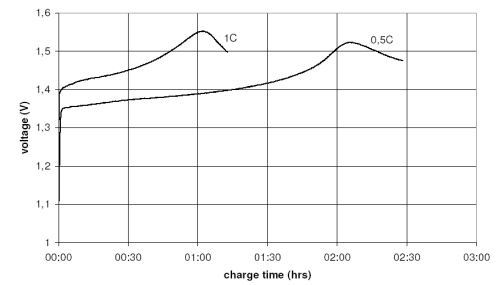
		Conditions
cell type:	NiMH	
cell size:	D	
nominal voltage:	1.2 V	
max. charge voltage:	1.5 V	at standard charge (0.1C / 20°C)
capacity		
nominal:	10000 mAh	discharge at 0.2C
minimum:	9300 mAh	discharge at 0.2C
	8500 mAh	discharge at 1C
		1.0V end discharge voltage
		ta: 20°C
max. continuous discharge current:	10 A	ta: 0...45°C
charge		
standard charge:	current 1000 mA	time 14....16hrs
quick charge:	2750 mA	4hrs
fast charge:	5000 mA	2.3hrs
recommended charge termination control parameters:	0...5 mV 0.8...1 °C 45...50 °C	- ΔV (-deltaV) temperature rise per minute TCO (temperature cut off)
trickle charge current:	50...350 mA	(recommended)
continuous overcharge: (less than 1 year)	≤ 750 mA	no conspicuous deformation no leakage
internal resistance: (impedance)	≤ 12 mΩ	at 1KHz battery fully charged
life expectancy:	≥ 500 cycles	acc. IEC standard
self discharge		
charge retention:	≥ 80 %	after 12 months storage at 20°C
initial capacity:	≥ 6000 mAh	within 30 days after delivery discharge at 0.2C
ambient temperature range:	0...45 °C 10...40 °C - 20...65 °C - 20...50 °C - 20...40 °C - 20...30 °C	standard charge fast charge discharge storage (≤3months) storage (≤6months) storage (≤24months)
QCT1:	20/9000/12	
QCT2:	30/8500/12	

Diagrams

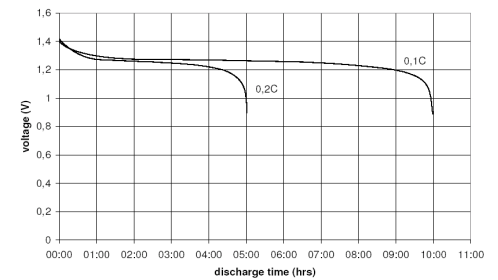
standard charge



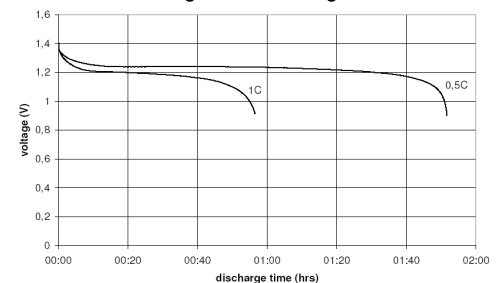
fast charge



low rate discharge

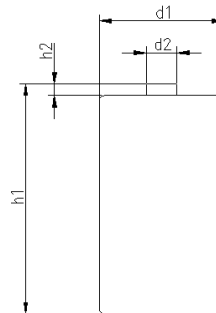



high rate discharge



mechanical specifications

cell dimensions			
diameter d1:		32.8 - 1.0	mm
diameter d2:	max.	9.5	mm
height h1:		61.5 - 2.0	mm
height h2:	min.	1.5	mm
weight:		157 ± 8	g
blister card dimensions:		123 x 85	mm
blister card weight (incl. batteries):		320	g



	ANSMANN Specifications for model:	D - 10000mAh low self discharge 2pcs blister package
	data sheet no. / part no.	5030642
	supplier no.	702069
	author / date	TG / 05.03.2018