

## Contacts and Clips

Order code	Manufacturer code	Description
18-3510	n/a	ON-BOARD +VE 9V BATTERY CLIP
18-3515	n/a	ON BOARD -VE 9V BATTERY CLIP
18-3520	n/a	BESIDE BOARD +VE 9V BATT.CLIP
18-3525	n/a	BESIDE BOARD -VE 9V BATT.CLIP

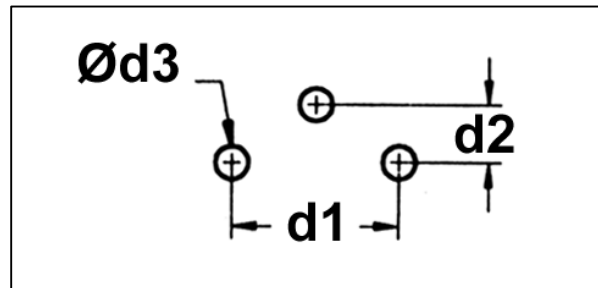
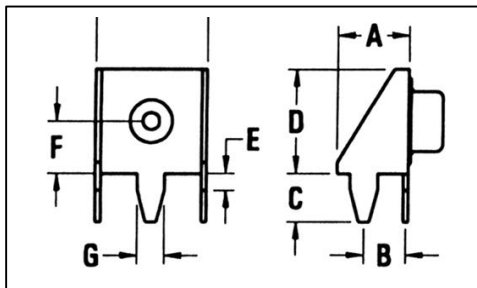
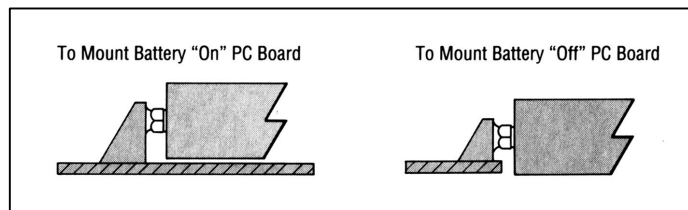
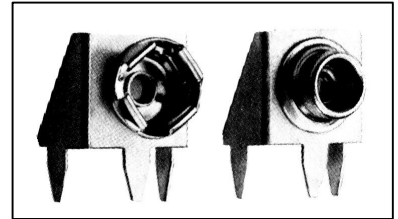
Contacts and Clips	Page 1 of 2
The enclosed information is believed to be correct, Information may change 'without notice' due to product improvement. Users should ensure that the product is suitable for their use. E. & O. E.	Revision A 04/07/2003

## PCB Battery Contacts – 9V

A range of battery clips for 9V batteries which mount directly into the PCB, helping to cut costs by eliminating wiring. Two types are available to either mount the battery on the surface of the PCB or to allow the battery to be mounted beside the PCB where height is a consideration.

### Specifications

Material: Frame 0.015 steel, tin plate  
 Contacts: Steel, nickel plate



Ref No.	Contact	Dimensions (mm) - Tolerance $\pm 0.4$									
		A	B	C	D	E	F	G	d1	d2	Ød3
BT-1322	+VE	3.6	3.7	3.0	14	1.26	8.9	1.6	9.3	3.0	1.8
BT-1324	-VE	3.6	3.7	3.0	14	1.26	8.9	1.6	9.3	3.0	1.8
BT-1326	+VE	6.35	3.8	4.56	9.64	1.58	4.82	2.54	10.0	3.96	2.8
BT-1328	-VE	6.35	3.8	4.56	9.64	1.58	4.82	2.54	10.0	3.96	2.8

Ref No.	Description
BT-1322	On-board +ve Battery Contact
BT-1324	On-board -ve Battery Contact
BT-1326	Beside-board +ve Battery Contact
BT-1328	Beside-board -ve Battery Contact