

GP Batteries

Product Specifications

USB Standard Charger

Model: U411

Revision History

Revision	Date	Initiator	Change description
00	2015-6-9	HanHai Liu	new issue
01	2015-8-5	Andrew Mak	Correction: Output rating: DC2.8V

Prepared by	Checked by	Approver
RD Engineer	Technical Director	Global Category Marketing Manager
HanHai Liu	Patrick Lee	Andrew Mak
Date: 2015-6-9	Date: 2015-6-9	Date: 2015-6-9

GPI International Limited

Gold Peak Building, 8/F, 30 Kwai Wing Road,
Kwai Chung, New Territories, Hong Kong.
Tel: (852) 2484 3333 Fax: (852) 24805912
Email: gpii@goldpeak.com
Website: <http://www.gpbatteries.com>

GP Batteries

Product Specification

Model No.: U411

Document Number: U411

Revision: 01

Page 2 of 5

1. SCOPE

This specification governs the performance of the following USB Standard Charger.

Model: **U411**

This is a compact USB standard charger with 4 slots/2 channels overnight charger for AA/AAA NiMH rechargeable batteries, containing user-friendly LED indicators.

All data specified are at room temperature 23°C; voltage and current are tested at the point of the input and the batteries contact plates.

2. RATINGS

Description	Specification
Input Rating	DC5.0V 1.0A
Output Rating	Total number of channels : 2 Per channel charging : 2xAA – DC2.8V 300mA average 2xAAA – DC2.8V 120mA average
Charging Time	8 +- 0.5 hours
Trickle Charge Current	2xAA – 1/10 charge current 2xAAA – 1/10 charge current
LED Indication	Just after power up by USB input – Green LED ON for 1 second Charging in progress – Green LED flashing Fully charged – Green LED ON
Battery Leakage Current	USB input disconnected & batteries remain inserted in charger < 10uA
Termination Method	Safety timer
Operation Temperature	0~33°C
Storage Temperature	-25~60°C
MTBF	30,000 hours at room temperature 25°C
Compliance	RoHS

GP Batteries

Product Specification

Model No.: U411

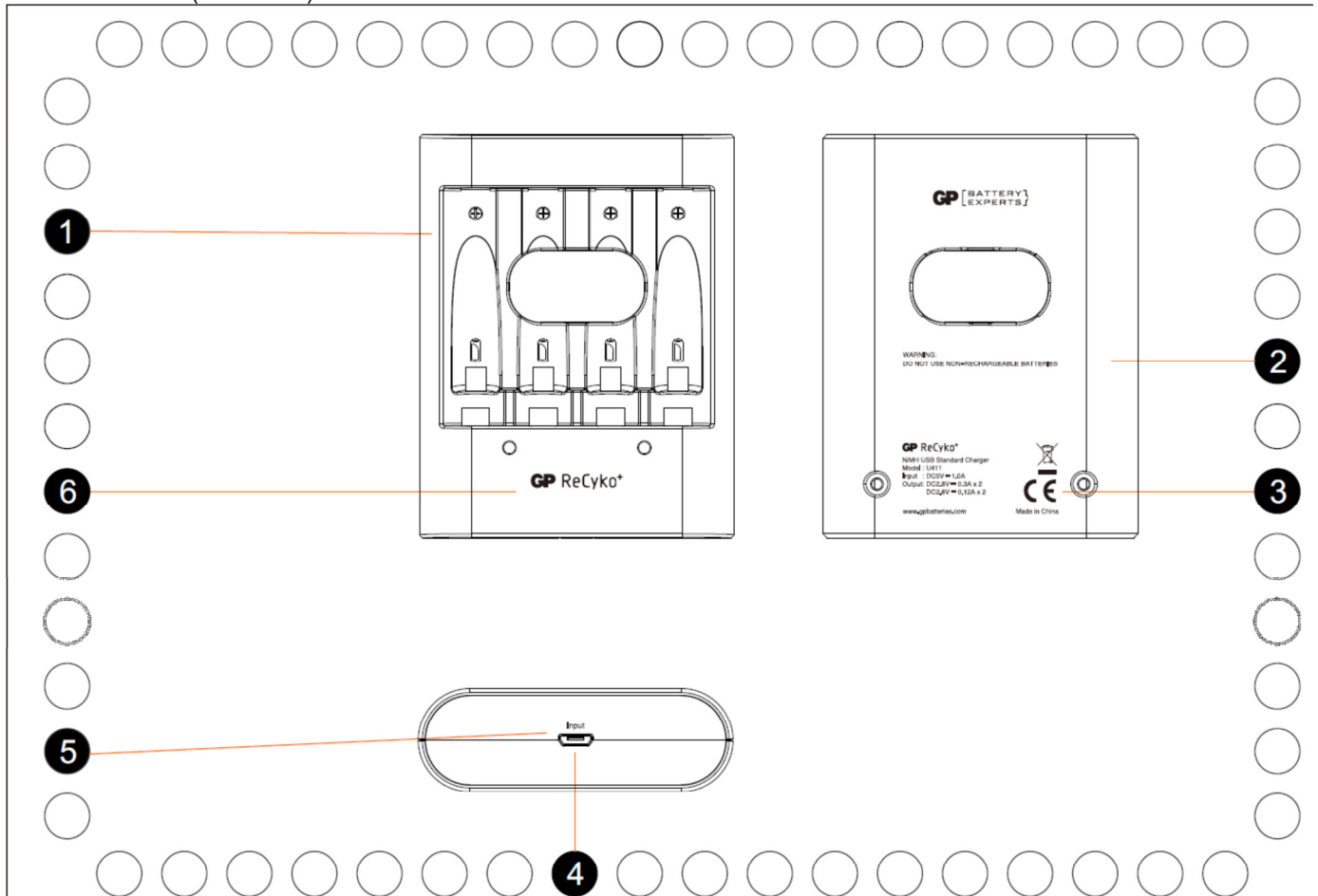
Document Number: U411

Revision: 01

Page 3 of 5

3. CONFIGURATIONS, DIMENSIONS AND MARKING

Dimensions (L x W x T): 900 x 698 x 230mm



No.	Parts	Material	Finish	Substrate Color	Color	Remarks
1	Front Cabinet	Plastic	N/A	N/A	Warm White	Colour refer to Colour Chip #90024
2	Rear Cabinet	Plastic	N/A	N/A	Warm White	Colour refer to Colour Chip #90024
3	Rating Label	N/A	Silkscreen	N/A	Pantone 428C	
4	Micro USB Jack	Standard Parts	N/A	N/A	Black in Colour	
5	Input	N/A	Silkscreen	N/A	Pantone 428C	
6	GP Logo	N/A	Silkscreen	N/A	Pantone 428C	

4. WARRANTY

One year limited warranty against workmanship and material defects.

GP Batteries

Product Specification

Model No.: U411

Document Number: U411

Revision: 01

Page 4 of 5

5. CAUTIONS

1. To reduce the risk of injury, it is recommended that GP Ni-MH rechargeable batteries are used.
2. Do not use non-rechargeable batteries.
3. Do not use the charger in humid conditions.
4. Do not use the charger if it has a damaged plug.
5. Do not use the charger after it has been dropped or damaged.
6. Do not open/disassemble the charger.
7. Unplug the charger before maintenance or cleaning.
8. Do not use the charger in direct sunlight.
9. This appliance can be used by children aged from 8 years and above and persons with reduced physical, sensory or mental capabilities or lack of experience and knowledge if they have been given supervision or instruction concerning use of the appliance in a safe way and understand the hazards involved.
10. Children should not play with the appliance.
11. Cleaning and user maintenance should not be made by children without supervision.