



ANSMANN Li-Ion batteries AAA Typ 500 (min. 400 mAh) 4pcs. paper blister

- High-quality ANSMANN lithium-ion battery AAA with protective circuitry
- Stable voltage of 1,5 V over 95% of the runtime. At a remaining capacity of approx. 5%, the voltage is reduced to 1.1V to signal to the user that the battery needs to be replaced.
- Ideally suited for use in Electric toys, torches, radios, measuring devices, security cameras, soap dispensers, electric door locks, etc.
- Integrated protective circuitry protects against overcharging, overload, short circuit and deep discharge
- Max. Continuous discharge current: 0,5 A
- Very low self-discharge and high energy efficiency
- Excellent price-performance ratio
- 2 years guarantee

INFORMATION

Product name	Li-Ion batteries AAA Typ 500 (min. 400 mAh) 4pcs. paper blister
Part No.	1311-0028
EAN code	4013674193967
Customs tariff number	85076000900
Material Group	04
Product content	4x AAA Li-Ion Rechargeable battery 500 mAh, 4 in 1 USB-C charging cable

Product	44 × 10 × 10 mm / 11 g
Packing + Product	86 × 12,5 × 123 mm / 59 g
Packing Unit	26 Packs (200 × 190 × 92 mm)



cell chemistry: Li-Ion
cell size: AAA (10430)
cell type: round cell

Conditions

nominal output voltage: 1.5 V when SOC (state of charge) of battery is >10%
 reduced output voltage: 1.05 V when SOC (state of charge) of battery is <10%

capacity
 nominal: 500 mAh discharge at 0.2C
 minimum: 400 mAh discharge at 0.2C
 350 mAh discharge at 0.5C
 ta: 20°C; EV(Discharge End Voltage): 0.9V

discharge ta: 0....45°C
 max. continuous discharge current: 500 mA
 nom. discharge current: 100 mA

charge via type-C connector (with USB charger)

supply voltage: 5 V ± 0.25V
 charge current: 100 mA ± 10%
 charge time: 2.75 h ± 0.5h

external charge (at battery + / - poles) is not allowed; charge battery via type-C connector only

internal resistance: n/a at 1kHz, sine wave measurement according to IEC 896-2

built-in li-ion battery: 3.7 V / 200mAh
 energy: 0.74 Wh

output protection functions

overload cut-off current: 1 A ± 0.3A

deep discharge protection function

cut-off voltage of int. battery: 2.6 V ± 0.3V

LED charge indicator

visible on the top side of the battery
 flashes red during charge
 lights red at end of charge (battery fully charged)



life time expectance

(C>70% of min. capacity) ≥ 1200 cycles at 0.2C charge/discharge rate

self discharge:

≤ 2 %/month at 20°C
 ≤ 5 %/month at 30°C
 ≤ 10 %/month at 40°C

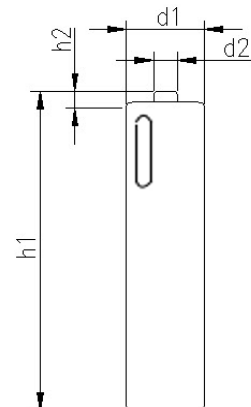
ambient temperature range:


0...45 °C charge
 - 20...60 °C discharge
 - 20...25 °C storage max. 1year
 - 20...45 °C storage max. 3months

recommended SOC: 30...50 % for long-time storage
 (SOC = state of charge)

mechanical specifications

cell dimensions (incl. sleeve)
 diameter d1: 10.5 - 0.7 mm
 diameter d2: 3.5 ± 0.5 mm
 height h1: 44.5 - 1 mm
 height h2: 1.3 ± 0.5 mm
 weight: 7 ± 1 g



	ANSMANN Specifications for model: AAA (10430) Li-Ion Battery 1.5V 500mAh w. type-C charge
	data sheet no. / part no. 1311-0028
	s.n. 705163
	author / date TG / 20.07.2023