



2
 JAHRE
 YEARS
 GARANTIE
 WARRANTY

ANSMANN Li-Ion batteries AA Typ 2000 (min. 1800 mAh) 4pcs. cardboard box

- High-quality ANSMANN lithium rechargeable battery AA with Safety Board
- Stable voltage of 1,5 V over the entire period of use
- Ideally suited for use in Remote controls, digital cameras, toys, torches, head lights, razors, kitchen appliances such as milk frothers, wall clocks, alarm clocks, etc.
- Integrated protective circuitry protects against overcharging, overload, short circuit and deep discharge
- Max. Continuous discharge current: 2 A
- Very low self-discharge and high energy efficiency
- Excellent price-performance ratio
- 2 years guarantee

INFORMATION

Product name Li-Ion batteries AA Typ 2000 (min. 1800 mAh)
 4pcs. cardboard box
Part No. 1312-0036
EAN-Code 4013674193974
Customs tariff number 85076000900
Material Group 04
Product content 4x AA Li-Ion Rechargeable battery 2000 mAh, 4 in 1 USB-C charging cable

Packing + Product 86 x 16,5 x 123 mm / 98 g
Packing Unit 20 (218 x 190 x 90 mm)



cell chemistry: Li-Ion
cell size: AA (14500)
cell type: round cell

Conditions

nominal output voltage: 1.5 V when SOC (state of charge) of battery is >10%
 reduced output voltage: 1.05 V when SOC (state of charge) of battery is <10%

capacity
 nominal: 2000 mAh discharge at 0.2C
 minimum: 1800 mAh discharge at 0.2C
 1700 mAh discharge at 0.5C
 ta: 20°C; EV(Discharge End Voltage): 0.9V

discharge ta: 0...45°C
 max. continuous discharge current: 2000 mA
 nom. discharge current: 400 mA

charge via type-C connector (with USB charger)
 supply voltage: 5 V ± 0.25V
 charge current: 350 mA ± 10%
 charge time: 3 h ± 0.5h

external charge (at battery + / - poles) is not allowed; charge battery via type-C connector only

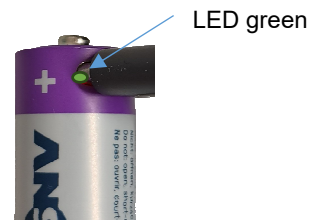
internal resistance: n/a at 1kHz, sine wave measurement according to IEC 896-2

built-in li-ion battery: 3.7 V / 920mAh
 energy: 3.4 Wh

output protection functions
 overload cut-off current: 2.5 A ± 0.5A

deep discharge protection function
 cut-off voltage of int. battery: 2.6 V ± 0.3V

LED charge indicator visible at the type-C socket
 (green colour) flashes during charge
 lights at end of charge (battery fully charged)



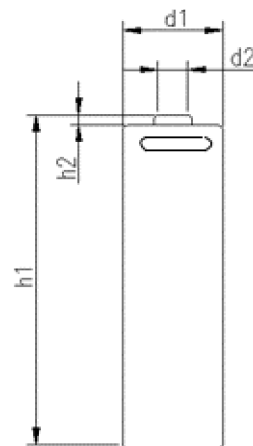
life time expectance (C>70% of min. capacity) ≥ 1200 cycles at 0.2C charge / discharge rate

self discharge:
 ≤ 2 %/month at 20°C
 ≤ 5 %/month at 30°C
 ≤ 10 %/month at 40°C

ambient temperature range:
 0...45 °C charge
 - 20...60 °C discharge
 - 20...25 °C storage max. 1year
 - 20...45 °C storage max. 3months

recommended SOC: 30...50 % for long-time storage
 (SOC = state of charge)

mechanical specifications
 cell dimensions (incl. sleeve)
 diameter d1: 14.3 - 0.5 mm
 diameter d2: 5.0 - 1 mm
 height h1: 50.5 - 1 mm
 height h2: 1.5 ± 0.5 mm
 weight: 19 ± 1 g



	ANSMANN Specifications for model: AA (14500) Li-Ion Battery 1.5V 2000mAh w. type-C charge
	data sheet no. / part no. 1312-0036
	s.n. 705163
	author / date TG / 21.11.2023