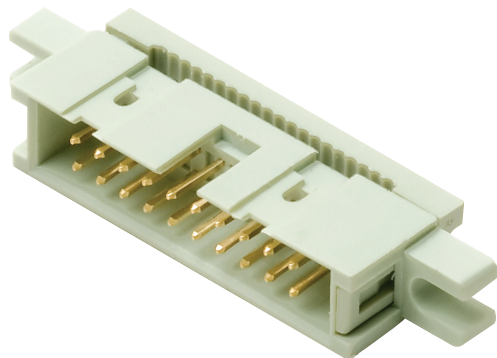


IDC Chassis Mounting Plug 2.54mm Pitch

26 way **19-0074**
 40 way **19-0075**
 16 way **19-0072**
 10 way **19-0071**



Notes:

1. Material

- 1.1 Insulator: Thermoplastic (UL 94V-0)
- 1.2 Contact: Copper alloy

2. Specification

- 2.1 Storage temperature: -20°C to +70°C
- 2.2 Operating temperature: 0 to 85°C
- 2.3 Contact resistance: 20mΩ max.
- 2.4 Insulation resistance: 1000MΩ min.
- 2.5 Dielectric withstanding voltage:
AC 500V per minute

