

IDC connectors

Order code	Manufacturer code	Description
19-0550	3012-10CRY	10 WAY R/ANGLE BOXED HEADER
19-0555	3012-14CRY	14 WAY R/ANGLE BOXED HEADER
19-0560	3012-16CRY	16 WAY R/ANGLE BOXED HEADER
19-0565	3012-20CRY	20 WAY R/ANGLE BOXED HEADER
19-0570	3012-26CRY	26 WAY R/ANGLE BOXED HEADER
19-0575	3012-34CRY	34 WAY R/ANGLE BOXED HEADER
19-0580	3012-40CRY	40 WAY R/ANGLE BOXED HEADER
19-0585	3012-50CRY	50 WAY R/ANGLE BOXED HEADER

IDC connectors	Page 1 of 2
The enclosed information is believed to be correct, Information may change 'without notice' due to product improvement. Users should ensure that the product is suitable for their use. E. & O. E.	Revision A 04/07/2003

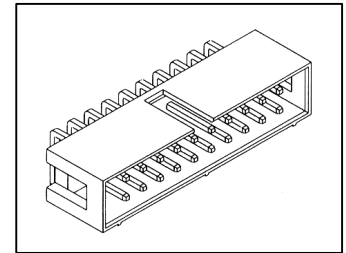
IDC Connectors

Oupiin 3012 Series – Right Angle Box Header 2.54mm

Technical Specification

Electrical

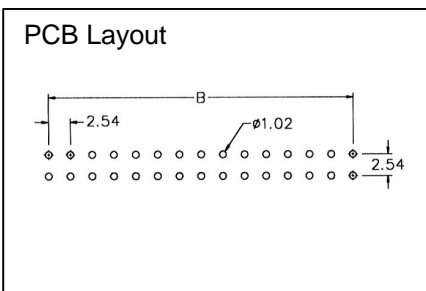
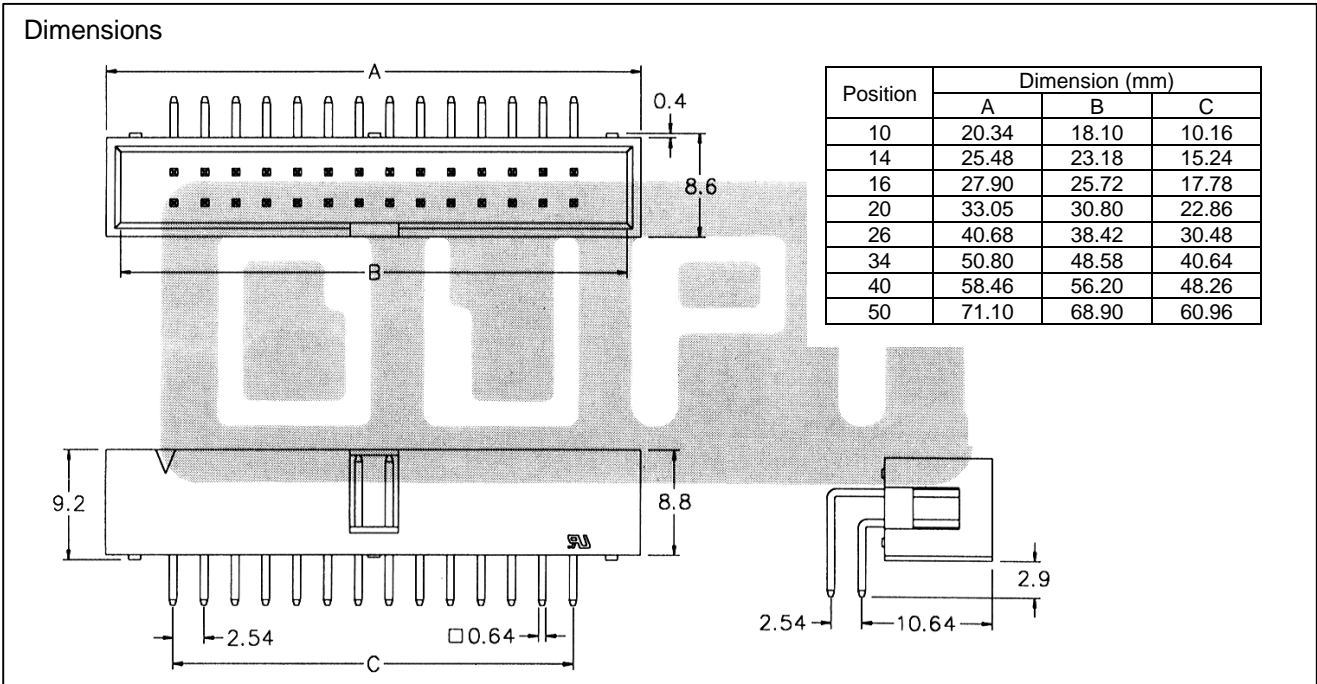
Current Rating: 1 A
 Insulator Resistance: 5,000 MΩ min. @ 500 VDC
 Contact Resistance: 20 mΩ max. @ 100mA DC
 Operating Temperature: -55°C to +105°C



Material

Housing: 30% Glass filled PBT UL94V-0
 Contacts: Brass
 Plating: Selective gold: Standard gold on mating area and tin plated on solder tail
 Colour: Grey

Mates with: 1001, 2041, 2042, 2043, 2044, 2045, 2046 & 2047 Series



Oupiin Ref No.	Description
3012-10 CRY	10 Way Right Angle Box Header
3012-14 CRY	14 Way Right Angle Box Header
3012-16 CRY	16 Way Right Angle Box Header
3012-20 CRY	20 Way Right Angle Box Header
3012-26 CRY	26 Way Right Angle Box Header
3012-34 CRY	34 Way Right Angle Box Header
3012-40 CRY	40 Way Right Angle Box Header
3012-50 CRY	50 Way Right Angle Box Header