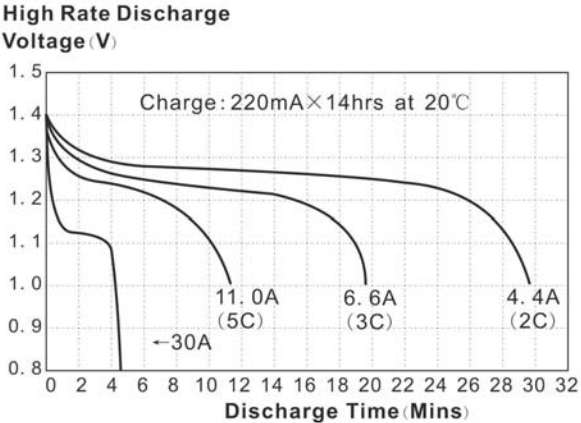
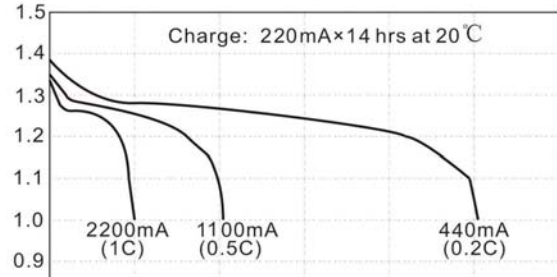
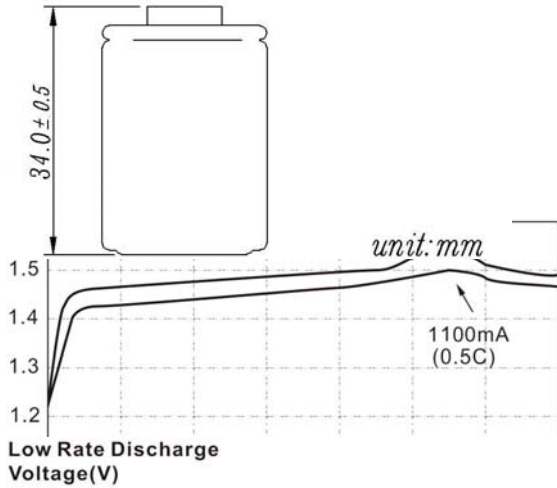
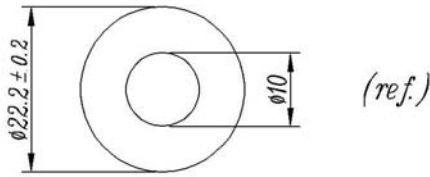


Sealed Rechargeable Cylindrical cell Nickel Metal Hydride
4/5SC-2200 mAh



Date Sheet

Type-----Enrichpower4/5SC2200
System-----Sealed rechargeable Ni-MHCylindrical cell
Nominal Voltage-----1.2V
Application-----Discharge current 220mA to 22A (Continuous)
Capacity (discharged at 0.2C to 1.0v at 20□)
 Nominal 2200mAh
 Minimum 2100mAh
 Typical 2200mAh
Internal resistance (at 1 kHz)
 Fully charged, 20□(approx)---5□7mΩ
Weight approx-----42g
Dimensions(including shrink sleeve)
 -Diameter -----22.2(±0.2mm)
 -Height -----34.0(±0.5mm)
Cd content(%cell w):-----0%

Max.discharge current(continuous)-----20C
Charging conditions(20□)
 standard charge-----220mA 14h
 quick charge-----2200mA 1.1h
 fast charge -----2A to 6A
 Charge termination control recommended control parameter
 -ΔV 5mV
 DT/dt 0.8□/min(0.5-1C)
 0.8□-1□/min(>1C)
 TCO 40-45□

Timer 105%nominal input

Continuous 100mA maximum current for 1 year
Overcharge No conspicuous deformation and/or leakage
Max.charging voltage 1.5V at 220mA charging
Operation temperatures(recommended)

Storage----- -20□ up to +35□
 Discharge----- -20□ up to +50□
 standard charge----- 0□ up to +40□
 quickcharge,fastcharge-- 10□ upto+40□
 permanent charge-----+10□ up to +45□

Life expectancy(20□)----->500 cycles