

## **25 x 50 LOKJAC Category 6 Locking Outlet**



### **25 x 50 LOKJAC Category 6 Locking Angled Outlet (SLJ45wh)**

Our locking Category 6 outlet offers a patented tool-less locking solution for standard faceplates. The locking mechanism insures maximum safety and security for your cables, allowing you to install, secure and, at a later date, release the locked cable as required.

#### ***Features***

- High performance data throughput, meets Category 6 data transfer rates at permanent link level
- Locked securely into place with LOKJAC key (TLJ – supplied separately), with easy lock and release mechanism
- High speed tool-less installation
- Can be terminated with either 110 or LSA+ type tools, if conventional punch down termination is preferred
- UTP socket to FCC68 standard
- Window and paper labeling facility; angled socket minimises strain on cables
- Supplied with an optional hinged shutter, which minimises the effect of dust
- N.B. Cannot be used without LOKJAC key (TLJ)

#### ***Specifications***

- Weight: 14g approx.
- Colour: White (black available to order)
- Dimensions: 25 x 37 x 50mm approx. (L x W x H)
- Materials:
  - Adaptor and keystone housing: ABS UL94-V0
  - Socket contacts: 50µ"/1.27µm gold plating

## **25 x 38 LOKJAC Category 6 Locking Outlet**



### **25 x 38 LOKJAC Category 6 Locking Angled Outlet (SLJ6-45bk)**

Our locking Category 6 outlet offers a patented tool-less locking solution for 6C faceplates or metalwork. The locking mechanism insures maximum safety and security for your cables, allowing you to install, secure and, at a later date, release the locked cable as required.

#### ***Features***

- High performance data throughput, meets Category 6 data transfer rates at permanent link level
- Locked securely into place with LOKJAC key (TLJ – supplied separately), with easy lock and release mechanism
- High speed tool-less installation
- Can be terminated with either 110 or LSA+ type tools, if conventional punch down termination is preferred
- UTP socket to FCC68 standard
- Window and paper labeling facility; angled socket minimises strain on cables
- Supplied with an optional hinged shutter, which minimises the effect of dust
- N.B. Cannot be used without LOKJAC key (TLJ)

#### ***Specifications***

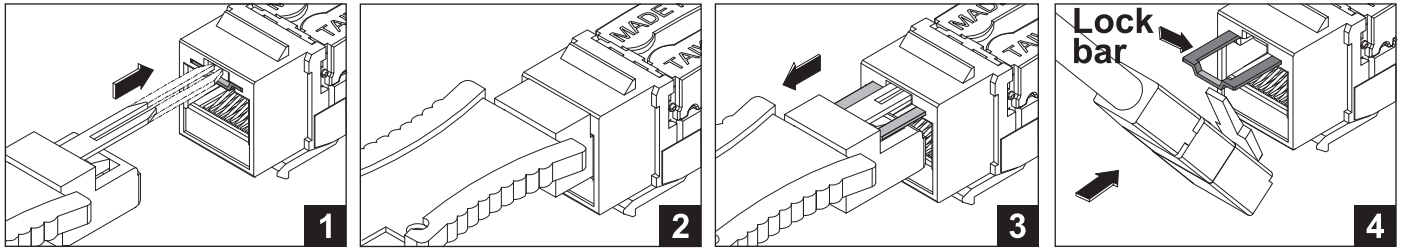
- Weight: 12g approx.
- Colour: Black (white available to order)
- Dimensions: 25 x 37 x 38mm approx. (L x W x H)
- Materials:
  - Adaptor and keystone housing: ABS UL94-V0
  - Socket contacts: 50µ"/1.27µm gold plating



# LOKJAC Instruction Manual



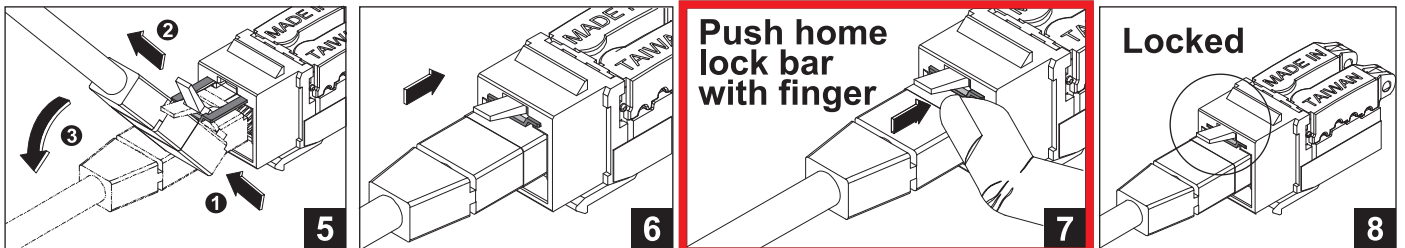
## To lock the plug



Insert key

Pull out the lock bar

Insert latch



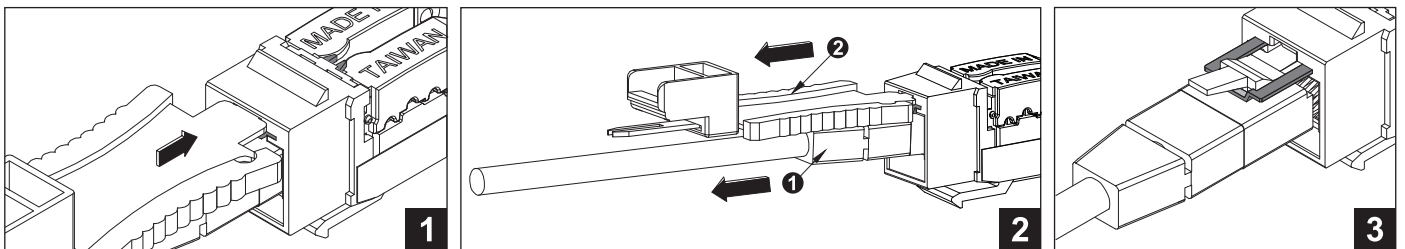
Rotate plug into place and insert

Push home  
lock bar  
with finger

Locked

\*PLUG IS NOT SECURE UNTIL  
LOCKBAR IS PUSHED HOME\*

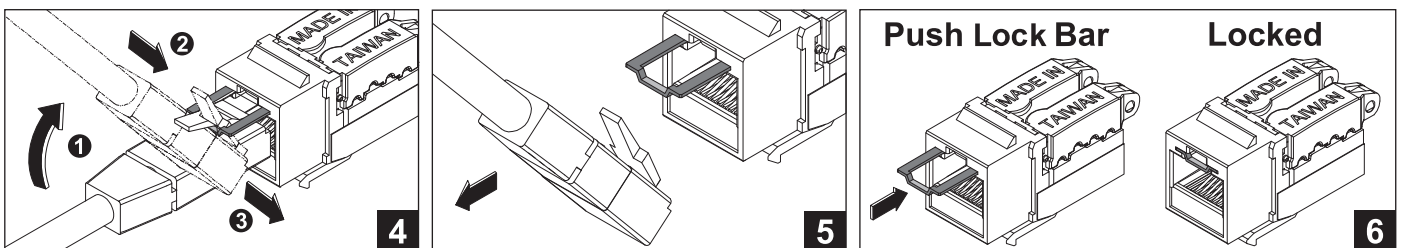
## To release the plug



Insert key to lock

Pull out patch cord and key

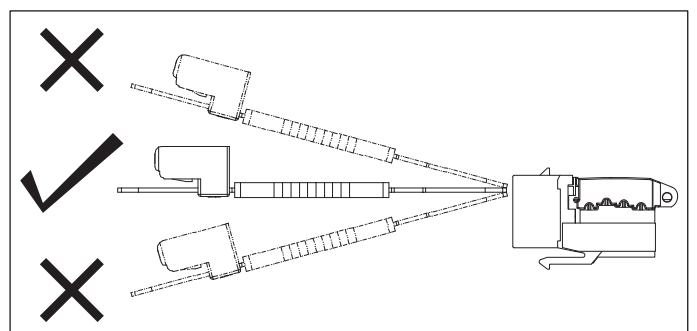
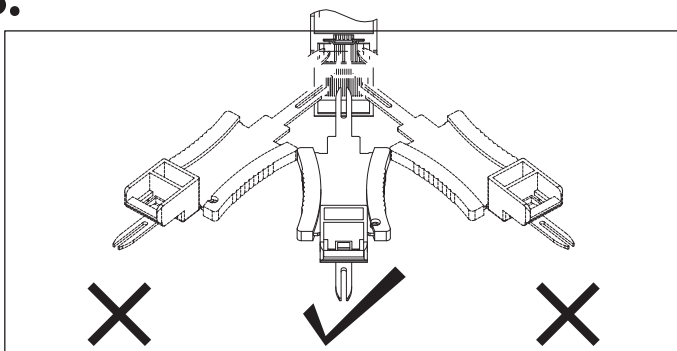
Reveal plug latch



Rotate plug and remove from lockbar

Push home lock bar

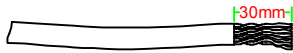
**NB.**



Key must be inserted perpendicular to the socket

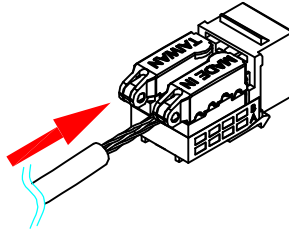
## LOKJAC Assembly Instructions

### Step 1



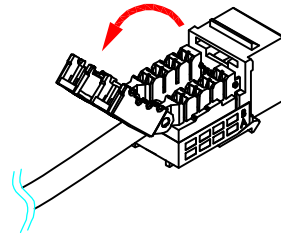
Strip around 30mm of cable PVC jacket.

### Step 2



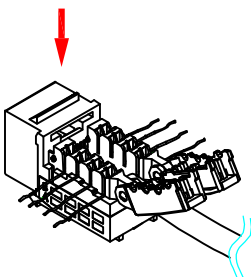
Place the cable between the two IDC rows

### Step 3



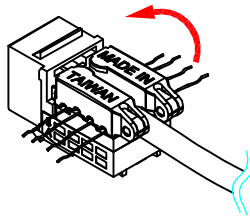
Open cable retention caps

### Step 4



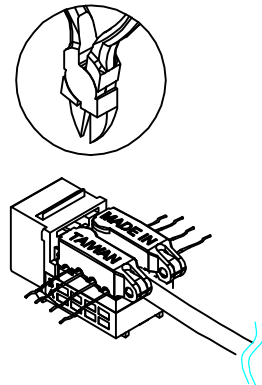
Place the cores onto the IDC gaps following the colour code

### Step 5



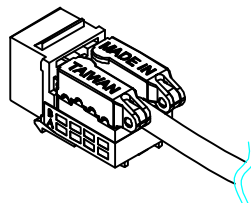
Press down cable retention caps

### Step 6



Cut off spare wires

### Step 7



Completed.