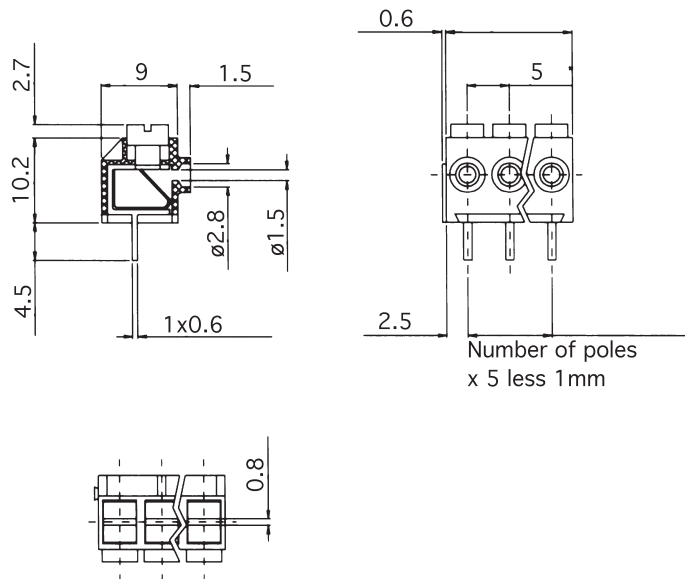
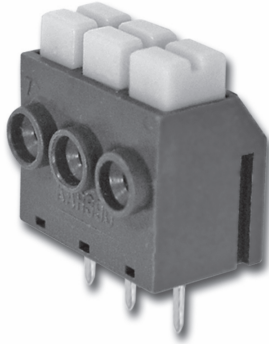


Screwless and IDC printed circuit connectors

SERIES 690T

5mm pitch - push button - side entry



FEATURES

Series 690T are 5mm pitch, side entry, screwless connectors with push button release. They are available in 2 and 3 pole versions which have interlocking dovetails to enable longer lengths to be assembled. Supplied as 2 or 3 pole modules, or to pre-assembled required lengths.

Please note. Only solid or tinned stranded conductors should be used in screwless connectors.

Approvals



Nominal Cross-Section mm²

22-16 AWG
8A

Voltage Rating

V

300

TECHNICAL DETAILS

Mouldings:	PBT, UL94 V0, grey body, yellow push buttons
Inserts & solder pins:	brass, tinned
Current rating:	8A
Contact spring:	stainless steel
Voltage rating:	300v
Conductor size:	up to 2.5mm ²
Temp limits:	max short term: 200° C continuous: RTI 120° C
Pin spacing:	5mm
Wire stripping length:	7mm - 7.5mm
Recommended hole dia. in p.c. board:	1.2mm - 1.4mm

OPTIONS

Marking: special printing available. Please provide sketch.

PART NUMBER CODE

Enter number of poles required

6 9 0 T - - - - -