



**Male connector; with straight solder pins; 8-pole; Pin spacing 7.5 mm / 0.295 in; with closed end; Vertical PCB mounting**

Item No.: 231-238/001-000



Male connector; with straight solder pins; 8-pole; Pin spacing 7.5 mm / 0.295 in; with closed end; Vertical PCB mounting

**Marking**

RoHS ✓  
Compliant

**Business data**

|            |                 |
|------------|-----------------|
| Supplier   | WAGO            |
| Item no.   | 231-238/001-000 |
| GTIN / EAN | 4044918864794   |
| Content    | 1               |
|            |                 |
|            |                 |

**Notes**

Item description: Version with press-in pins provides solder-free connection to PCB Coding option available  
Safety information 1: The MULTI CONNECTION SYSTEM (MCS) is designed without breaking capacity for compliance with DIN EN 61984. When used as intended, MCS Connectors shall not be connected/disconnected when live or under load. The circuit design should ensure header pins, which can be touched, are not live when unmated.

**Technical data**

*Miscellaneous*

|   |                    |
|---|--------------------|
| Other versions (or variants) can be requested | Other pole numbers |
|---|--------------------|

Printview: Male connector; with straight solder pins; 8-pole; Pin spacing 7.5 mm / 0.295 in; with closed end;  
Vertical PCB mounting - Item No.: 231-238/001-000

| <b>Technical data</b>                         |  |
|---|--|
| <i>Ratings per</i>                            | <i>IEC/EN 60664-1</i>  |
| <i>Rated voltage (III / 3) [V]</i>            | <i>500 [V]</i>   |
| <i>Rated impulse voltage (III / 3) [kV]</i>   | <i>6 [kV]</i>  |
| <i>Rated voltage (III/2) [V]</i>              | <i>630 [V]</i>   |
| <i>Rated impulse voltage (III / 2) [kV]</i>   | <i>6 [kV]</i>  |
| <i>Rated voltage (II / 2) [V]</i>             | <i>1000 [V]</i>  |
| <i>Rated impulse voltage (II / 2) [kV]</i>    | <i>6 [kV]</i>  |
| <i>Rated current [A]</i>                      | <i>12 [A]</i>  |
| <i>Legend (ratings)</i>                       | <i>(III / 2) Overvoltage category III / Pollution degree 2</i> |
| <i>Approvals per</i>                          | <i>UL 1059</i>   |
| <i>Rated voltage UL (Use Group B) [V]</i>     | <i>300 [V]</i>   |
| <i>Rated current UL (Use Group B) [A]</i>     | <i>10 [A]</i>  |
| <i>Rated voltage UL (Use Group D) [V]</i>     | <i>300 [V]</i>   |
| <i>Rated current UL (Use Group D) [A]</i>     | <i>10 [A]</i>  |
| <i>Rated voltage CSA (Use Group B) [V]</i>    | <i>300 [V]</i>   |
| <i>Rated current CSA (Use Group B) [A]</i>    | <i>10 [A]</i>  |
| <i>Rated voltage CSA (Use Group D) [V]</i>    | <i>300 [V]</i>   |
| <i>Rated current CSA (Use Group D) [A]</i>    | <i>10 [A]</i>  |
| <i>No. of poles</i>                           | <i>8</i>   |
| <i>Number of levels</i>                       | <i>1</i>   |
| <i>Pin spacing</i>                            | <i>7.5 mm (0.295 in)</i>                                       |
| <i>Width</i>                                  | <i>60.7 mm / 2.39 Inch</i>                                     |
| <i>Height</i>                                 | <i>17 mm / 0.669 Inch</i>                                      |
| <i>Height from the surface</i>                | <i>12 mm / 0.472 Inch</i>                                      |
| <i>Depth</i>                                  | <i>8.4 mm / 0.331 Inch</i>                                     |
| <i>Solder pin length [mm]</i>                 | <i>5 [mm]</i>  |
| <i>Solder pin dimensions</i>                  | <i>1 x 1 mm</i>  |
| <i>Drilled hole diameter (tolerance) [mm]</i> | <i>1.4(+ 0.1) [mm]</i>   |
| <i>Contact type (pluggable connector)</i>     | <i>Male connector/plug</i>                                     |
| <i>Connector connection type</i>              | <i>for PCBs</i>  |
| <i>Mismating protection</i>                   | <i>nein</i>  |
| <i>Mating direction to the PCB [°]</i>        | <i>90 [°]</i>  |
| <i>PCB contact</i>                            | <i>THT</i>   |

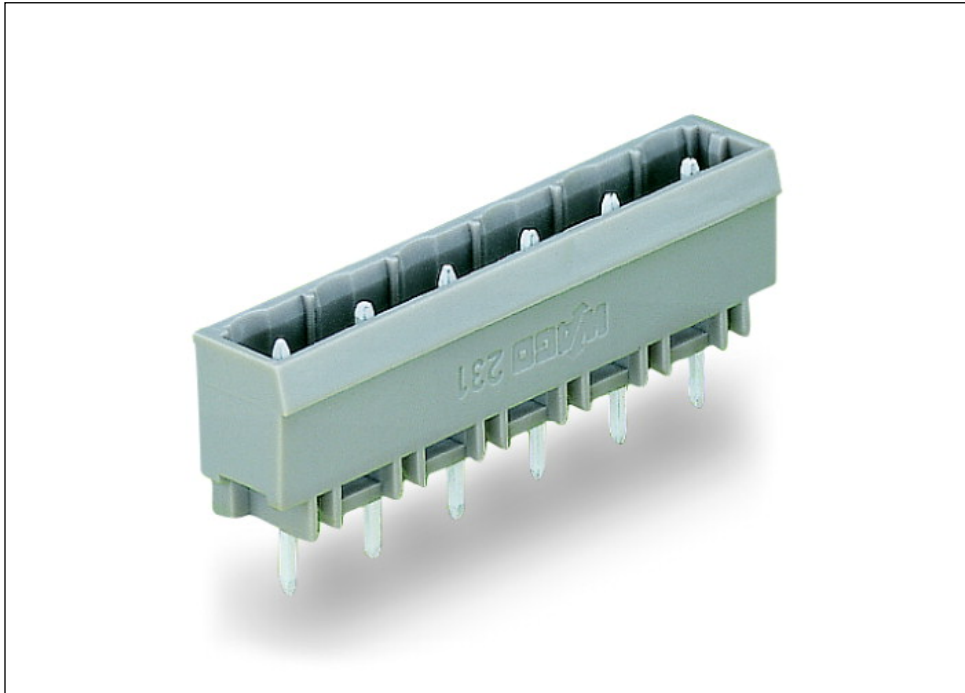
Printview: Male connector; with straight solder pins; 8-pole; Pin spacing 7.5 mm / 0.295 in; with closed end;  
 Vertical PCB mounting - Item No.: 231-238/001-000

| <b>Technical data</b>                      |  |
|--|--|
| <i>Solder pin arrangement</i>              | <i>over the entire male connector, in line</i> |
| <i>Number of solder pins per potential</i> | <i>1</i>                                       |
| <i>Color</i>                               | <i>gray</i>                                    |
| <i>Material group</i>                      | <i>I</i>                                       |
| <i>Insulating material</i>                 | <i>Polyamide 66 (PA 66)</i>                    |
| <i>Flammability class per UL94</i>         | <i>V0</i>                                      |
| <i>Contact material</i>                    | <i>Electrolytic copper (Ecu)</i>               |
| <i>Contact plating</i>                     | <i>tin-plated</i>                              |
| <i>Fire load [MJ]</i>                      | <i>0.067 [MJ]</i>                              |
| <i>Weight [g]</i>                          | <i>3.26 [g]</i>                                |
| <i>Limit temperature range</i>             | <i>-60 ... 100 °C</i>                          |
| <i>Pin spacing from [in]</i>               | <i>0.295 [in]</i>                              |
| <i>Pin spacing from [mm]</i>               | <i>7.5 [mm]</i>                                |
| <i>Contact type</i>                        | <i>Male connector/plug; for PCBs</i>           |
| <i>Product Family</i>                      | <i>MCS MIDI Classic</i>                        |
| <i>Main product function</i>               | <i>Male connector/plug</i>                     |
| <i>Product type</i>                        | <i>Pluggable PCB connectors</i>                |

Printview: Male connector; with straight solder pins; 8-pole; Pin spacing 7.5 mm / 0.295 in; with closed end; Vertical PCB mounting - Item No.: 231-238/001-000

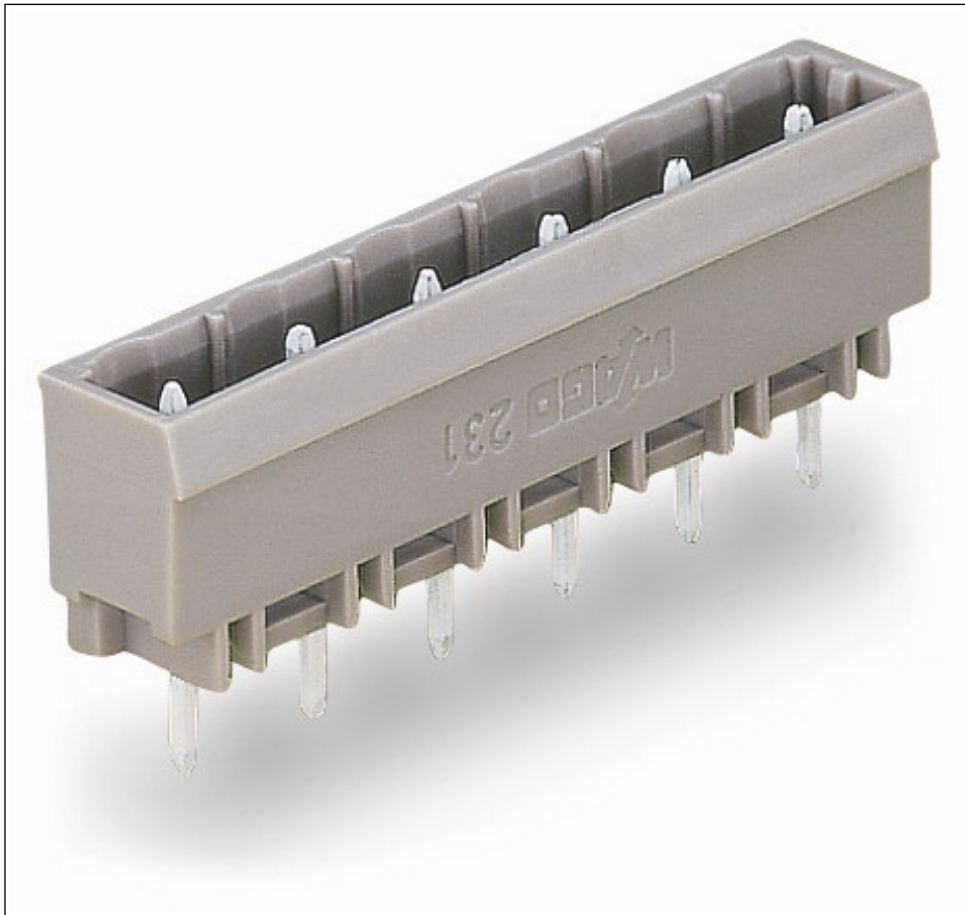
---

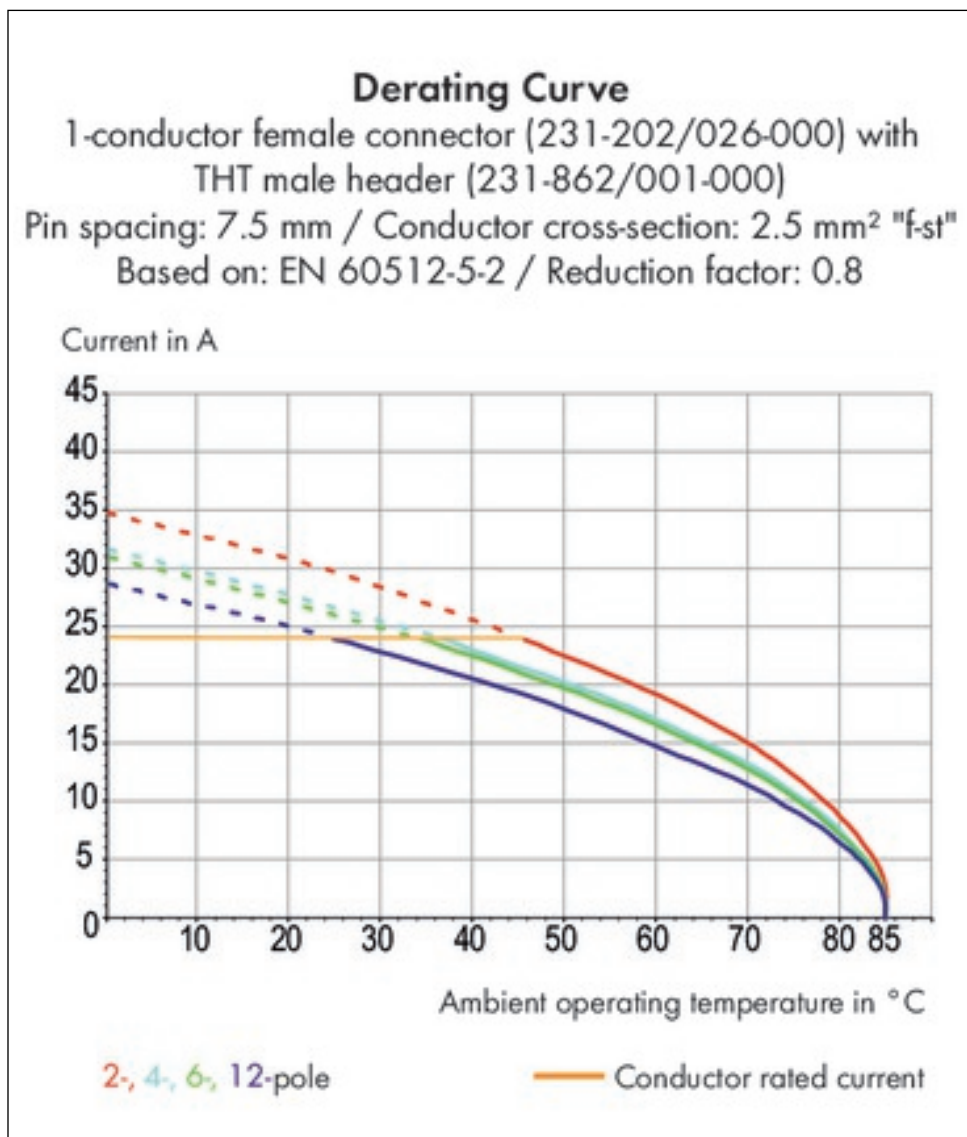
### Images & drawings

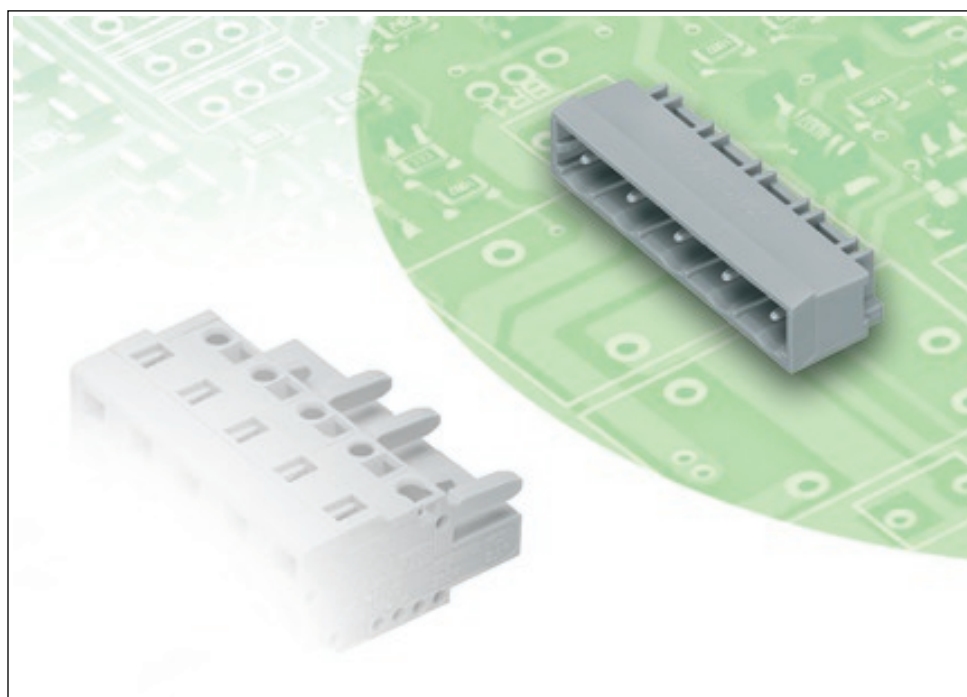
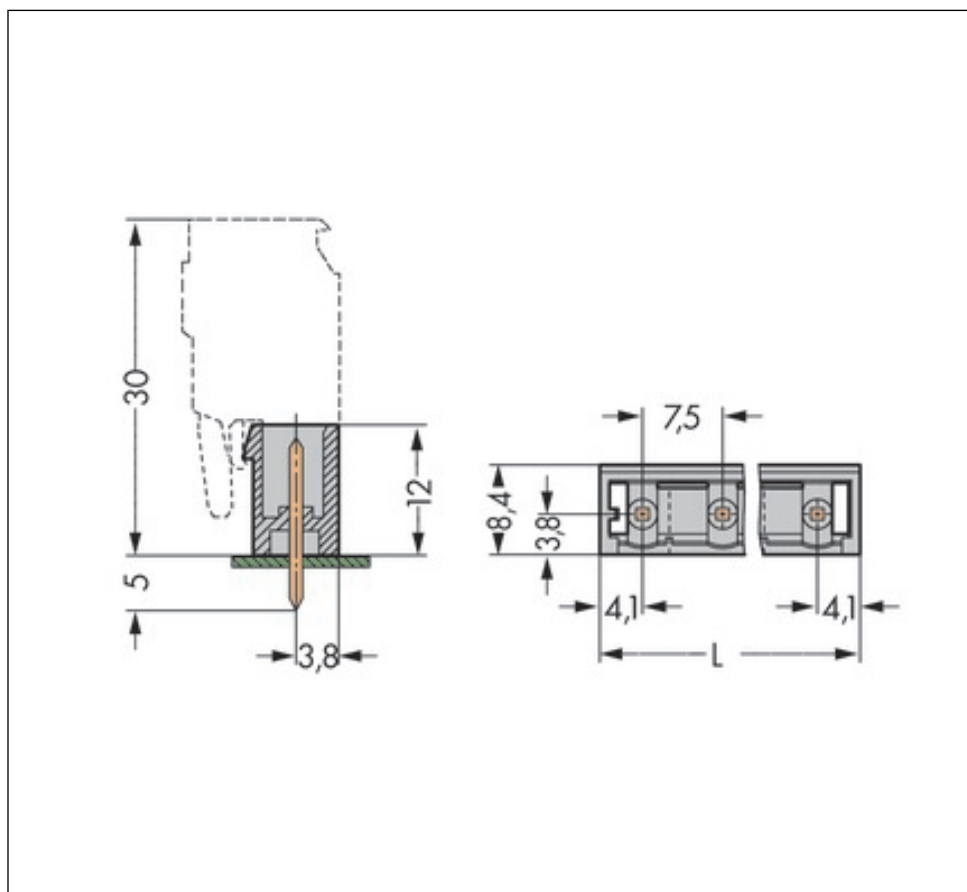


Printview: Male connector; with straight solder pins; 8-pole; Pin spacing 7.5 mm / 0.295 in; with closed end; Vertical PCB mounting - Item No.: 231-238/001-000

---







**Address**

WAGO Kontakttechnik GmbH & Co. KG

Hansastr. 27

32423 Minden

Telefon: 0571/887-0

Fax: 0571/887-169

<http://www.wago.com>

© WAGO Kontakttechnik GmbH & Co. KG

Technische Änderungen und Irrtümer vorbehalten.