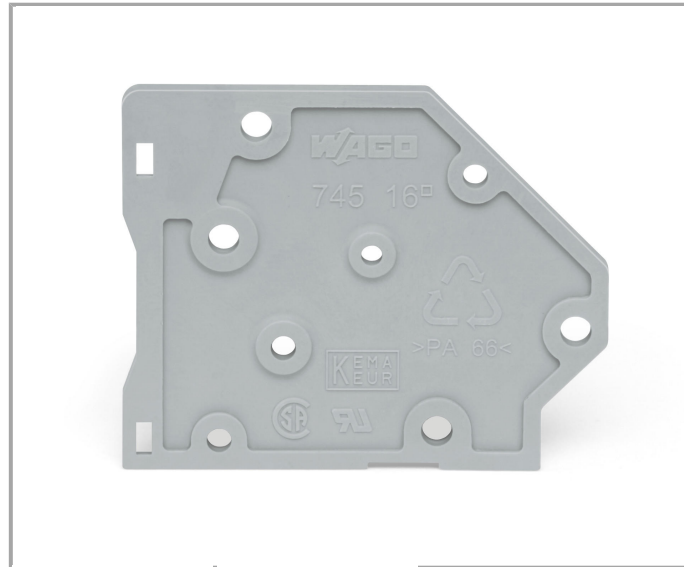


Data sheet | Item number: 745-500
End plate; snap-fit type; 1.7 mm thick

www.wago.com/745-500



RoHS Compliant

[BOMcheck.net](https://www.bomcheck.net)

Color: ■

Data

Geometrical Data

Width	1.7 mm / 0.067 inch
Height	27 mm / 1.063 inch
Depth	33.4 mm / 1.315 inch

Mechanical data

Type of mounting	snap-on type
------------------	--------------



Material Data

Color	gray
Fire load	0.035 MJ
Weight	1.175 g

Subject to changes.

WAGO Kontakttechnik GmbH & Co. KG
Hansastr. 27
32423 Minden
Phone: +49571 887-0 | Fax: +49571 887-169
Email: info.de@wago.com | Web: www.wago.com

Do you have any questions about our products?
We are always happy to take your call at 01788 568 008.