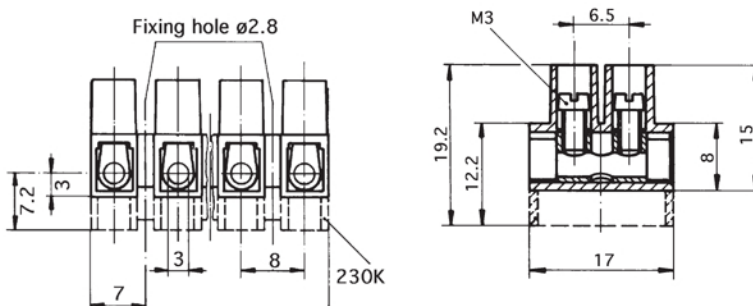
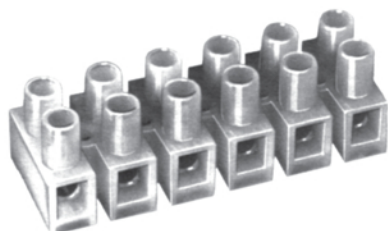


Terminal blocks - strip type

SERIES 230

16A - 24A terminal blocks - compact style



Length = number of poles x 8 less 2mm

FEATURES

Series 230 terminal blocks provide a 10 amp current rating within a shorter length housing. They incorporate M3 screws which will meet the requirements of British Standards for equipment designated 10 amp nominal rating. They are available in standard height and raised base (suffixed K) which are suitable for applications where creepage and clearance distances must be observed. They are available in two grades of material, nylon 6 or nylon 6.6 which is suitable for high temperature applications. Supplied with or without wire protectors, with captive screws fitted as standard.

Approvals		
Nominal Cross-Section mm ²	2.5	22-12 AWG 30A
Voltage Rating	V	450 150/250

TECHNICAL DETAILS

Mouldings:	nylon 6, natural, UL94 V2 nylon 6.6, brown, UL94 V0
Inserts:	brass, tinned
Screws:	M3 steel, zinc plated, chromed
Screw tightening torque:	max: 0.5 Nm
Temp. limits:	max short term: 160° C continuous: 100° C
Current rating:	to EN 60 598: 16A to EN 60 998: 24A
Voltage rating:	see approvals
Conductor size:	without wire protectors: 4mm ² with wire protectors: 1.5mm ²
Wire stripping length:	5mm - 5.5mm

OPTIONS**Marking:** special printing available. Please provide sketch.**Cut lengths:** standard 12 pole lengths can be cut to shorter lengths.