

DC Power Connectors

Order code	Manufacturer code	Description
22-3830	39291028	2 WAY MINI-FIT R/A HEADER
22-3832	39291048	4 WAY MINI-FIT R/A HEADER
22-3834	39291068	6 WAY MINI-FIT R/A HEADER
22-3836	n/a	8 WAY MINI-FIT R/A HEADER
22-3838	n/a	n/a
22-3840	n/a	12 WAY MINI-FIT R/A HEADER

DC Power Connectors	Page 1 of 2
The enclosed information is believed to be correct, Information may change 'without notice' due to product improvement. Users should ensure that the product is suitable for their use. E. & O. E.	Revision A 04/07/2003

Mini-Fit, Jr.™ Power Connectors

Molex 39-29-1xx8 Series – Mini-Fit, Jr.™ Header, Right Angle – Dual Row With Flanges

Features & Benefits

- Flanges allow for screw-in retention to board-mounted header
- Low profile for space constraints
- Positive housing locks

Reference Information

Product Specification: PS-5556-0001
 UL File No: E29179
 CSA File No: LR19980
 TUV License No: R75142
 Mates with: 5557 receptacle
 Use with: Standard Mini-Fit terminals

Electrical

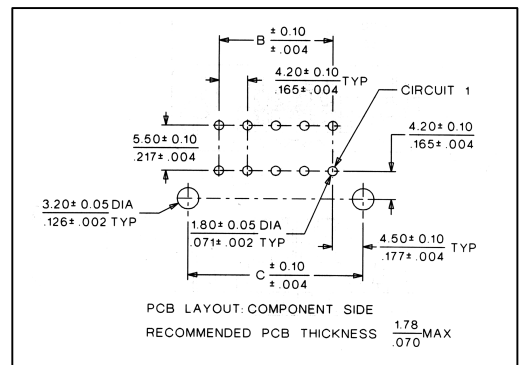
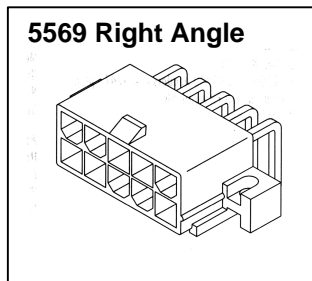
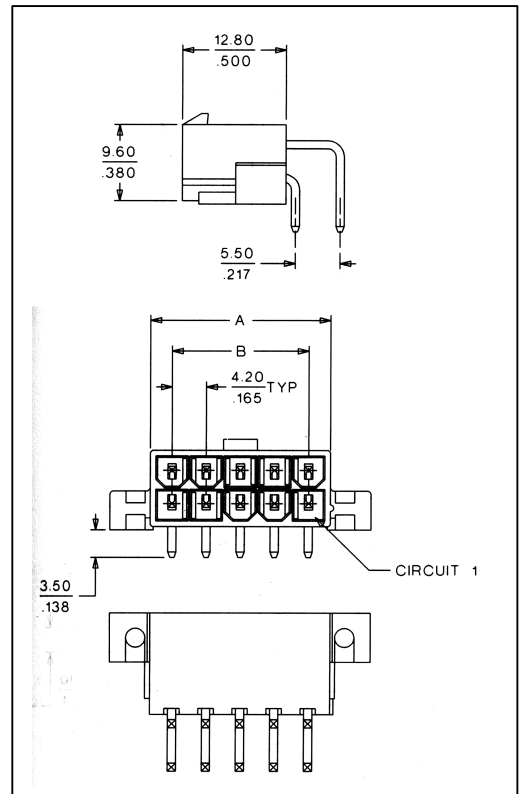
Voltage: 600V
 Current: 9.0A
 Contact Resistance: 10mΩ max.
 Dielectric Withstand Voltage: 1500V AC
 Insulation Resistance: 1000MΩ

Mechanical

Insertion Force to PCB: 5.0kg max.
 Mating Force: 0.7kg (1.54lb) per circuit max.
 Unmating Force: 0.35kg (0.7lb) per circuit min.
 Normal Force: 200g min.
 Durability: 30 cycles

Physical

Housing: 6/6 nylon, UL 94V-2 or 94V-0
 Contact: Brass or Phosphor Bronze
 Plating: Tin
 Temperature: -40 to +105°C



Molex Ref No.	Circuits	Dimensions		
		A	B	C
39-29-1028	2	5.40 (.213)		9.00 (.354)
39-29-1048	4	9.60 (.378)	4.20 (.165)	13.20 (.520)
39-29-1068	6	13.80 (.543)	8.40 (.331)	17.40 (.685)
39-29-1088	8	18.00 (.709)	12.60 (.496)	21.60 (.850)
39-29-1108	10	22.20 (.874)	16.80 (.661)	25.80 (1.016)
39-29-1128	12	26.40 (1.039)	21.00 (.827)	30.00 (1.181)