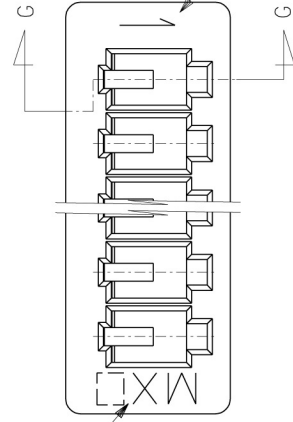


Order code	Manufacturer code	Description
22-3942	n/a	2WAY 1.25MM RECPTCLE MOLEX 51021-0200 RC
22-3944	n/a	4WAY 1.25MM RECTACLE MOLEX 51021-0400 RC
22-3946	n/a	6WAY 1.25MM RECTACLE MOLEX 51021-0600 RC
22-3948	n/a	8WAY 1.25MM RECTACLE MOLEX 51021-0800 RC
22-3950	n/a	10WAY 1.25MM RECPTCLE MOLEX 51021-1000 RC
22-3952	n/a	12WAY 1.25MM RECPTCLE MOLEX 51021-1200 RC

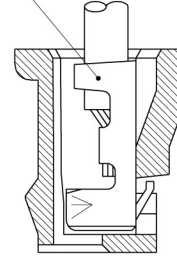
	Page 1 of 4
The enclosed information is believed to be correct, Information may change 'without notice' due to product improvement. Users should ensure that the product is suitable for their use. E. & O. E.	Revision A 04/07/2003

トレードマーク
TRADE MARK



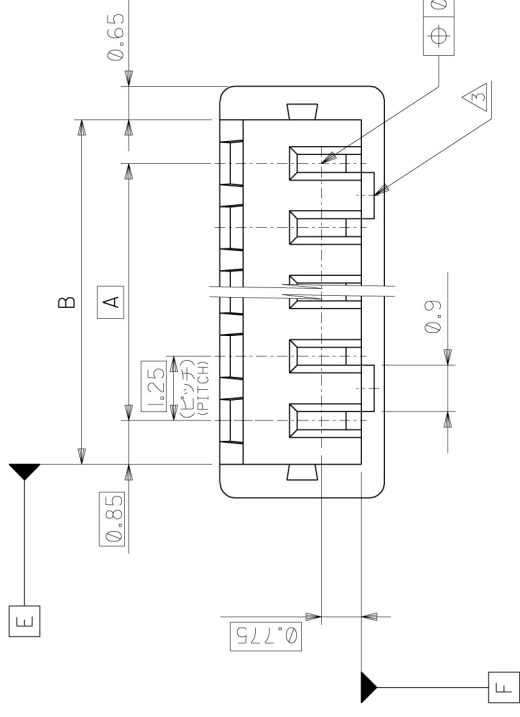
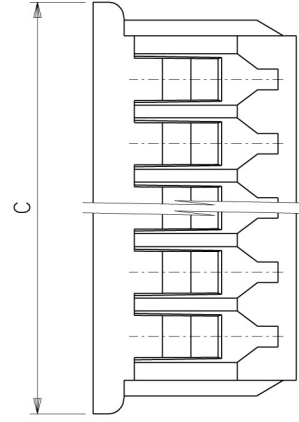
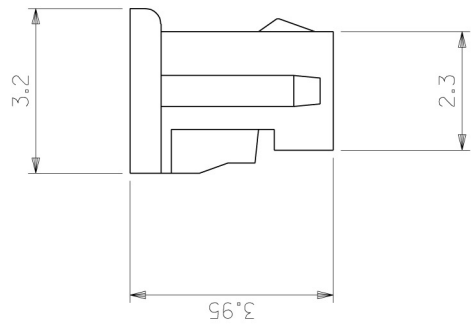
CKT. NO. 1

SECT. G-G



注記 NOTES

- △ 適合ターミナル : 50058, 50079 シリーズ
APPLICABLE TERMINAL : 50058, 50079 SERIES
- 2 嵌合相手 : 53047, 53048, 53261, 53398 シリーズ
MATE WITH : 53047, 53048, 53261, 53398 SERIES
- △ ロックは、2, 3種は1ヶ, 4種以上は2ヶとする。
LOCKING WINDOW : ONE PLACE FOR 2 & 3 CKT.
AND TWO PLACES FOR MORE THAN 3 CKT.
- △ ウエハーの色 COLOR OF WAFER
ENG. NO. の下1桁に対応する。
CORRESPONDS TO LAST DIGIT OF ENG. NO.
黒 BLACK : 51021-***01



角度	±3°
30°以上	±0.3
10°以上	未満
10°以下	±0.25
10°以下	±0.2
一般公差	±0.2
GENERAL TOLERANCES	

新編/成 RELEASD	0	DR. T.A. H.H.	95/5/31
変更内容 REVISION RECORD		T. ASAKAWA	95/5/31
記号 LTR		M. FUKUSHIMA	尺度 10 : 1

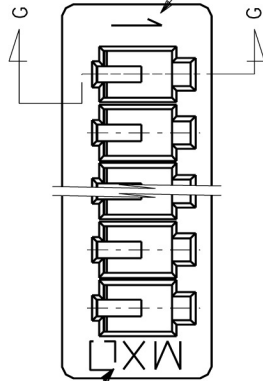
材料 MATERIAL	PBTP UL94V-0		
仕上り FINISH	—H—		
適用電線範囲 WIRE RANGE	—H—		
被覆外径 INS. RANGE	—H—		
DRAWN BY	95/5/31	CHKD BY	95/5/31
DR. T. ASAKAWA		T. ASAKAWA	Y. M. HIRAMOTO
APP'D BY	95/5/31	尺度	10 : 1
M. FUKUSHIMA	SCALE	10 : 1	
REV		DWG. NO.	SD-51021-***0
0		種数 CKTS.	2

molex MOLEX-JAPAN CO., LTD.
日本モレックス株式会社

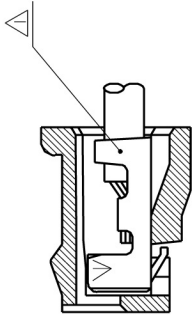
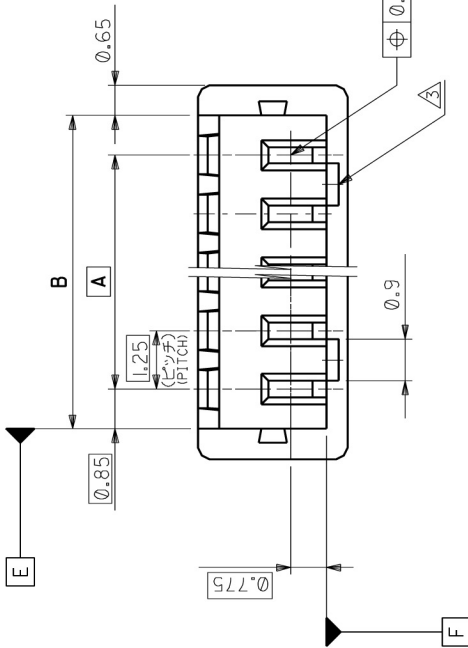
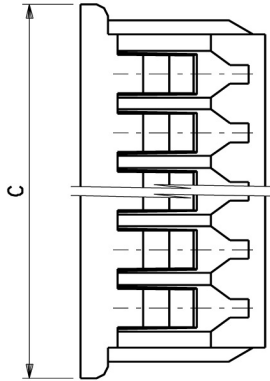
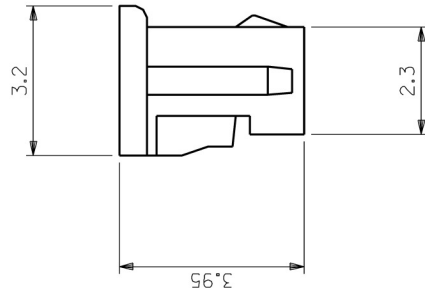
REVISE ONLY ON CAD SYSTEM
TITLE 名称
1.25 WIRE TO BOARD CONN.
RECEPTACLE HOUSING
(DYED COLOR)

DWG. NO. SD-51021-***00

トレードマーク
TRADE MARK



CKT. NO. 1



SECT. G-G

注記 NOTES

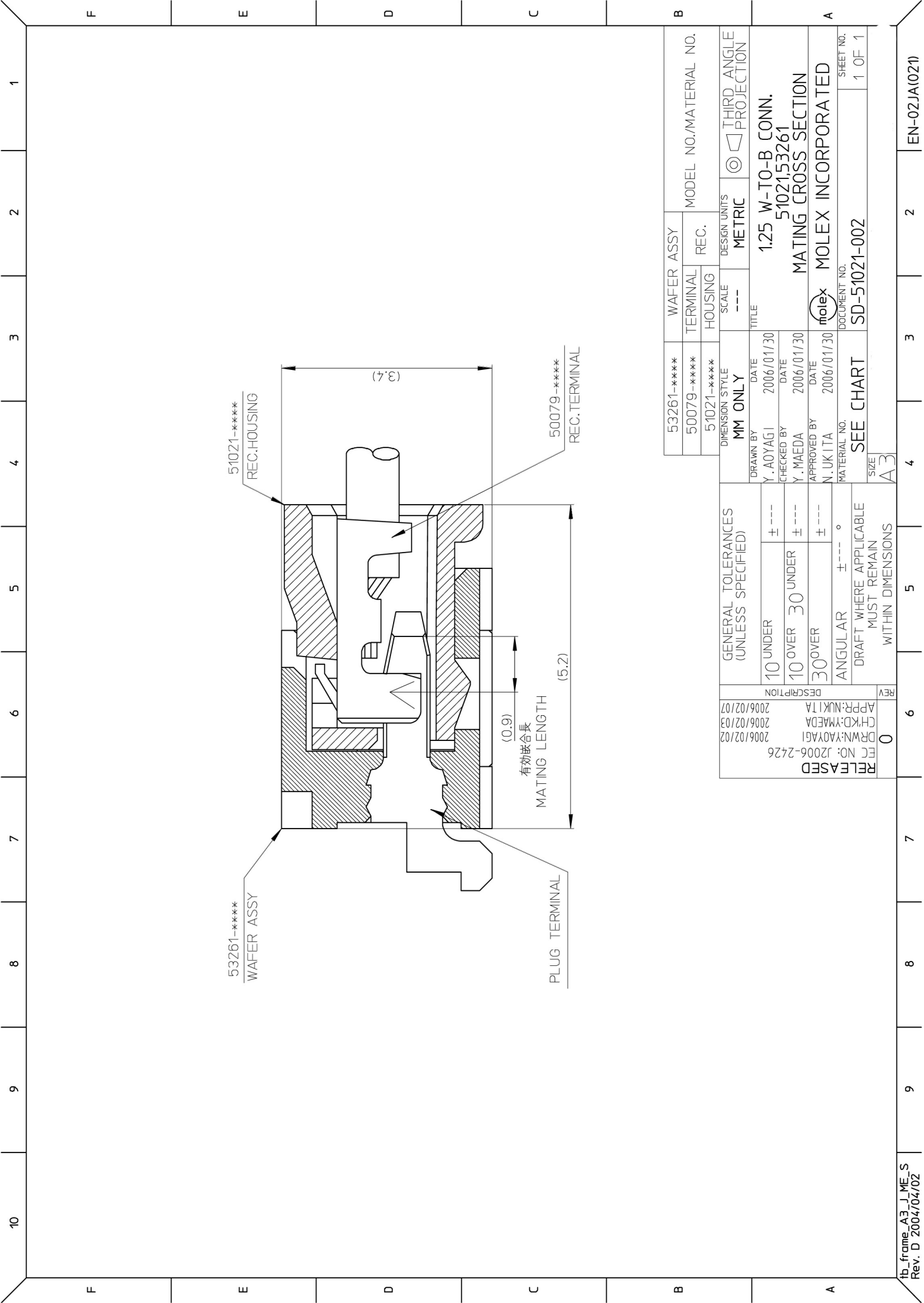
- △ 適合ターミナル : 50058, 50079 シリーズ
APPLICABLE TERMINAL : 50058, 50079 SERIES
- 2 適合相手 : 53047, 53048, 53261, 53398 シリーズ
MATE WITH : 53047, 53048, 53261, 53398 SERIES
- △ ロックは、2, 3種は1ヶ, 4種以上は2ヶとまる。
LOCKING WINDOW : ONE PLACE FOR 2 & 3 CKT.
AND TWO PLACES FOR MORE THAN 3 CKT.

20.5	19.2	17.5	51021-1500	15
19.25	17.95	16.25	-1400	14
18	16.7	15	-1300	13
16.75	15.45	13.75	-1200	12
15.5	14.2	12.5	-1100	11
14.25	12.95	11.25	-1000	10
13	11.7	10	-0900	9
11.75	10.45	8.75	-0800	8
10.5	9.2	7.5	-0700	7
9.25	7.95	6.25	-0600	6
8	6.7	5	-0500	5
6.75	5.45	3.75	-0400	4
5.5	4.2	2.5	-0300	3
4.25	2.95	1.25	51021-0200	2
C	B	A	ENG. NO.	種数 CKTS.

材料 MATERIAL	PBTP UL94V-0		MOLEX-JAPAN CO.,LTD. モレックス株式会社
仕上り FINISH	—#—		REVISE ONLY ON CAD SYSTEM
適用電線範囲 WIRE RANGE	—#—		TITLE 名称
被覆外径 INS. RANGE	—#—		1.25 WIRE TO BOARD CONN. RECEPTACLE HOUSING
DRAWN BY 93/6/1 K.T.OJO	CHK'D BY 93/6/1 H.HIRAMOTO	尺度 SCALE 10 : 1	DWG. NO. SD-51021-***00
APPRO'D BY 93/6/1 M.FUKUSHIMA	日付 DATE	REVISION RECORD	REV D

角度 ANGLE	±3°
30 以上 10 以下	+0.3 -0.25
30 未満 10 未満	+0.25 -0.2
公差 TOLERANCES	一般公差

MM DIMENSIONS IN METRIC DO NOT SCALE DRAWING



53261-****	WAFER ASSY	MODEL NO./MATERIAL NO.
50079-****	TERMINAL	REC.
51021-****	HOUSING	
SCALE ---		DESIGN UNITS METRIC
TITLE		THIRD ANGLE PROJECTION
DRAWN BY Y. AOYAGI		DATE 2006/01/30
CHECKED BY Y. MAEDA		DATE 2006/01/30
APPROVED BY N. UKITA		DATE 2006/01/30
MATERIAL NO.		DOCUMENT NO.
SEE CHART		SD-51021-002
SIZE A3		SHEET NO. 1 OF 1

GENERAL TOLERANCES (UNLESS SPECIFIED)	
10 UNDER	± ---
10 OVER	30 UNDER
30 OVER	± ---
ANGULAR	± --- °
DRAFT WHERE APPLICABLE MUST REMAIN WITHIN DIMENSIONS	
REV 0	DESCRIPTION
APPR: NUKITA	2006/02/07
CHKD: MAEDA	2006/02/03
DRWN: AOYAGI	2006/02/02
EC NO: J2006-2426	
RELEASED	