

C6 connectors

Order code	Manufacturer code	Description
23-0010	4300.0100	C6 SCHURTER INLET SOLDER (RC)
23-0015	4300.0101	C6 SCHURTER INLET PCB MOUNT (RC)

C6 connectors	Page 1 of 3
The enclosed information is believed to be correct, Information may change without notice due to product improvement. Users should ensure that the product is suitable for their use. E. & O. E.	Revision A 20/02/2007

IEC Appliance Connector C6, 70°C



C6



70° C

**Description**

- Panel Mount:
Screw-on from front or rear-side
- Inlet, Pin temperature 70 °C, Protection class I
- Solder terminals for wires or PCB

Weblinks

Approvals: <http://www.schurter.com/approvals>
 RoHS: <http://www.schurter.com/rohs>

Technical Data

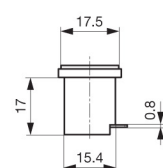
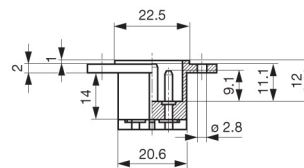
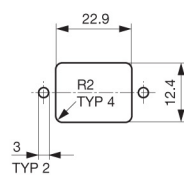
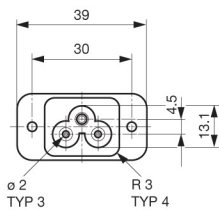
Ratings IEC	2.5 A / 250 VAC; 50 Hz
Ratings UL/CSA	2.5 A / 250 VAC; 60 Hz
Dielectric Strength	> 2 kVAC between L-N > 2 kVAC between L/N-PE (1 min/50 Hz)
Allowable Operation Temp.	-25 °C to 70 °C
Degree of Protection	from front side IP 40 acc. to IEC 60529
Protection Class	Suitable for appliances with protection class I acc. to IEC 61140
Terminal	Solder terminals for wires or PCB
Panel Thickness s	Screw-on: max 4 mm Mounting screw torque max 0.5 Nm
Material: Housing	Thermoplastic, black, UL 94V-0

Appliance-Inlet /-Outlet	C6 acc. to IEC/EN 60320-1, UL 498, CSA C22.2 no. 42 (for cold condition) pin-temperature 70 °C, 2.5 A, Protection class I
--------------------------	--

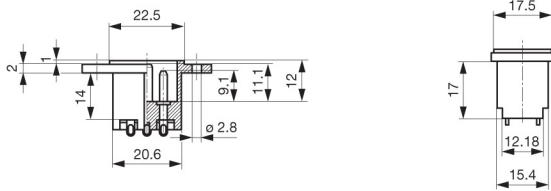
Dimensions

Length |—————| 39 mm

Solder terminals for PCB

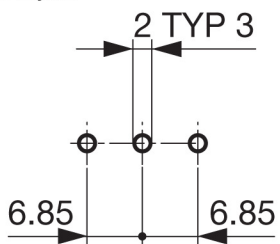


Solder terminals for wires



Drilling diagrams

PCB Layout



Variants

Type	Panel mounting	Panel Thickness s [mm]	Terminal	Order Number
0724	Screw-on	4	PCB	4300.0101
0724	Screw-on	4	Solder terminals	4300.0100

Packaging unit 50 Pcs