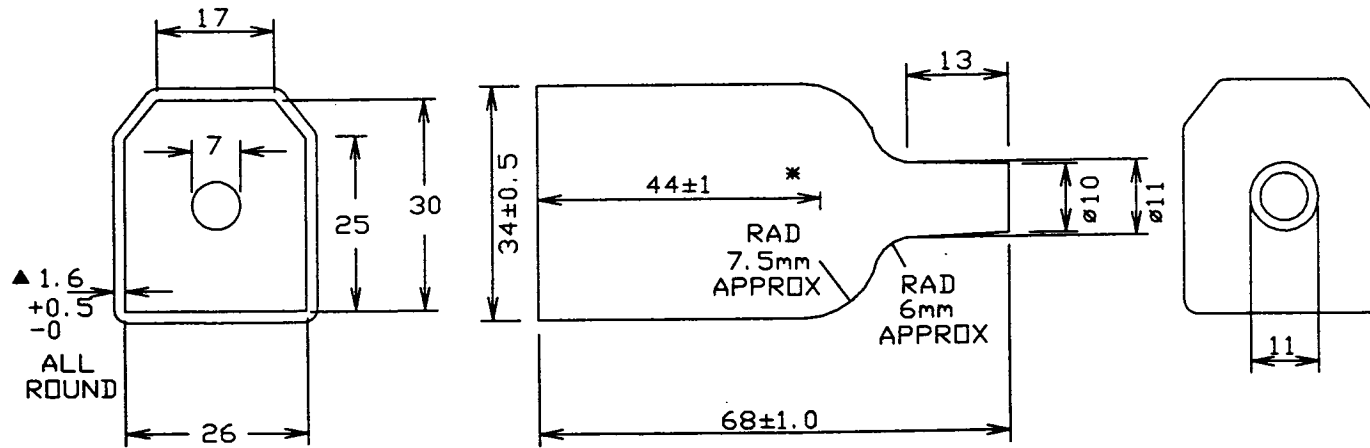


IEC connectors

Order code	Manufacturer code	Description
23-0355	n/a	BOOT TO SUIT 23-0360 + 23-0380

IEC connectors	Page 1 of 2
The enclosed information is believed to be correct, Information may change 'without notice' due to product improvement. Users should ensure that the product is suitable for their use. E. & O. E.	Revision A 04/07/2003

CLIFF



* END OF STRAIGHT SECTION

ISS.	AMEND	DATE
1.	1ST DRAWN	17/5/91
2.	TOL WAS ± 0.1	16/10/91
3.	ISIR 0188	13/7/94
4.	VIEWS AMENDED	25/6/96

TOLERANCE	
NO DEC. PLACE	± 1.0
1 DEC PLACE	±
2 DEC PLACE	±
DIA OF HOLES	±
ANGLES	±
UNLESS OTHERWISE STATED	

WHERE USED F.R.

SCALE N.T.S.

DIMENSIONS IN MILLIMETRES UNLESS OTHERWISE STATED. WORK TO DIMENSIONS. DO NOT SCALE DRAWING. 3rd ANGLE PROJECTION. REMOVE BURRS.

Cliff Electronic Components Limited 76 Holmethorpe Avenue, Holmethorpe Industrial Estate, Redhill, Surrey. RH1 2PF, England Tel: 01737-771375 Fax: 01737-766012	MATERIAL VINYL BLACK		TITLE MS3 BOOT	
	FINISH AS MOULDED		DRWG. No. CL 19285	
	DRAWN C.A.M.J.	APPD. R.W.T.	FORM: A4DRWGH	