

Domestic Mains

| Order code | Manufacturer code | Description |
|------------|-------------------|-----------------------------|
| 23-1580 | K2142WHI | TWIN 32MM SURFACE MOUNT BOX |

| | |
|--|--------------------------|
| Domestic Mains | Page 1 of 2 |
| The enclosed information is believed to be correct, Information may change 'without notice' due to product improvement. Users should ensure that the product is suitable for their use. E. & O. E. | Revision A 04/07/2003 |

MOULDED BOX - SURFACE MOUNTING

2 GANG - SQUARE STYLE. MK No. 2142WHI

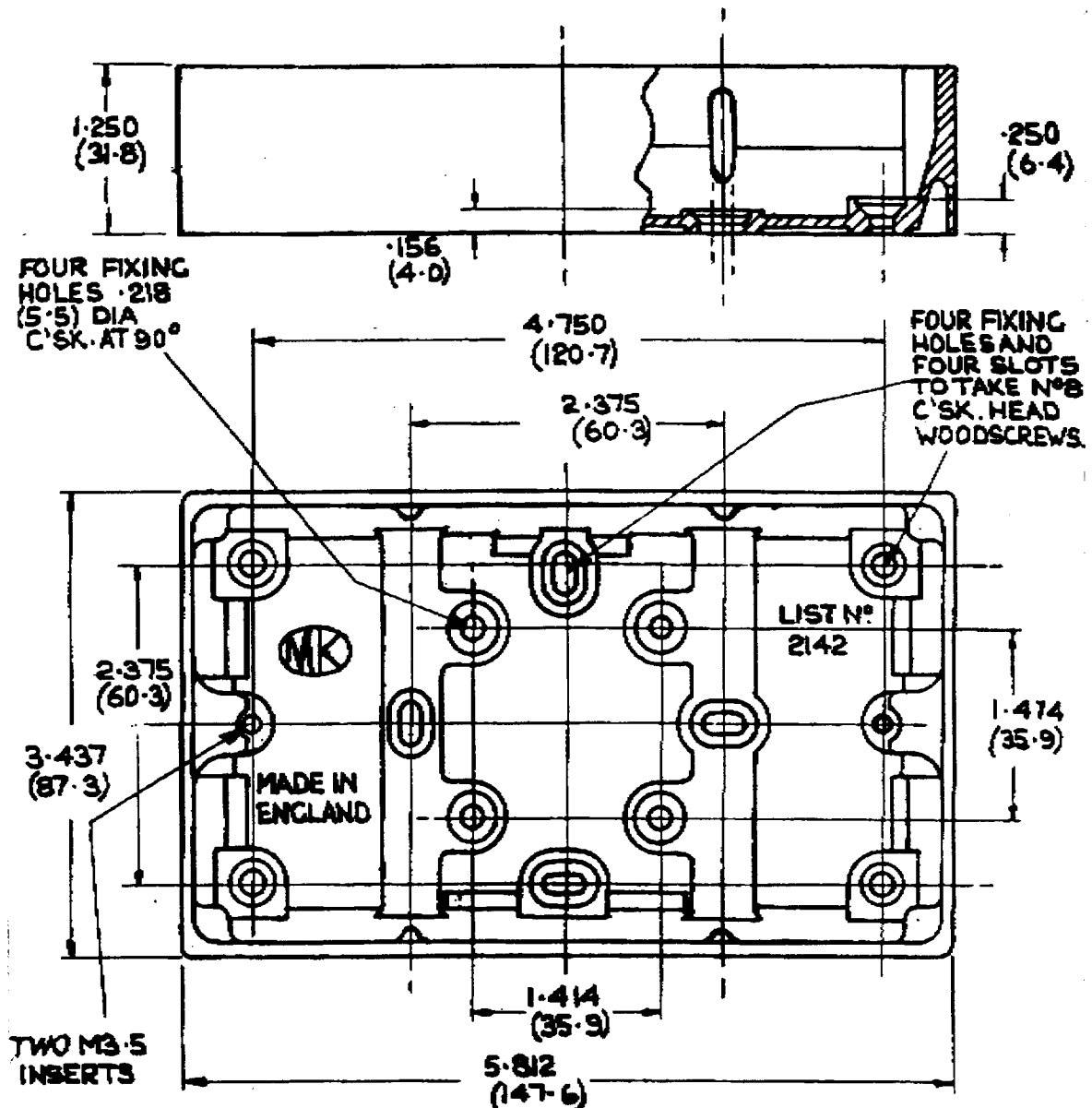
General Information

Box moulded in urea non-track insulating material to BS.1322.

Knockouts provide for universal cable entry.

Provision for mounting box over BS.4568 small circular box.

Accepts all square style power accessories. Flush insulated.



ALL DIMENSIONS SHOWN ARE NOMINAL. mm EQUIVALENTS ARE IN BRACKETS.