

GUIDER II_s

With large building volume and multiple nozzle diameter options, Guider IIs can meet diversity printing demands of high strength and conventional filaments in offices, schools and industries. Adopting air filtration system, it is safer and more environmental-friendly that Guider IIs is your prior choice to improve production and manufacturing efficiency.



300°C All Upgrade High-temperature Extruder

- It can reach to 300°C, so as to support more filament printing.
- Instead of coming as a spare part.

FILAMENT

ASA

PETG

PC

PA

ABS

PLA

PLA Change Color

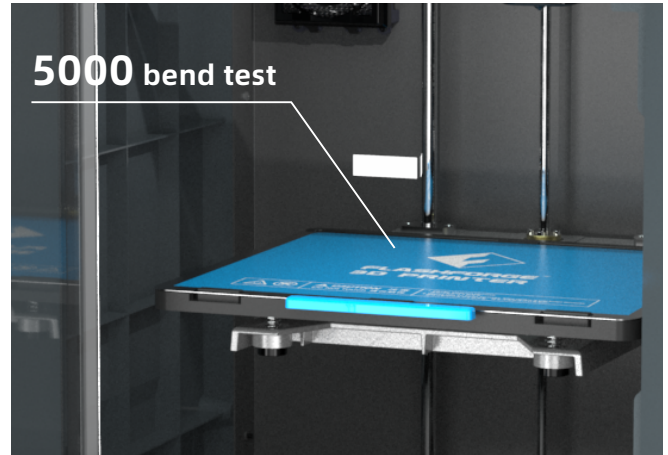
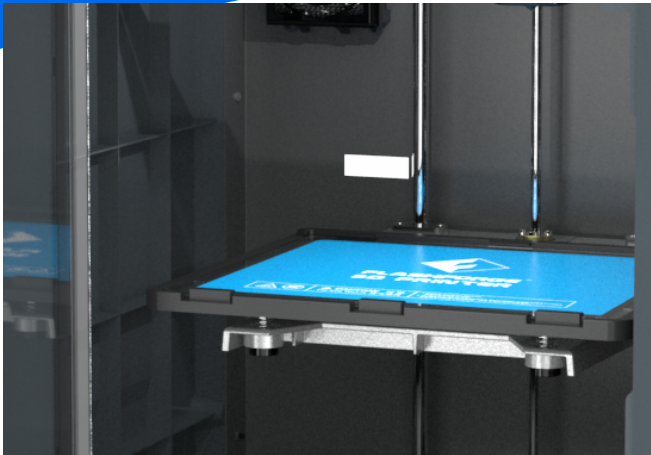
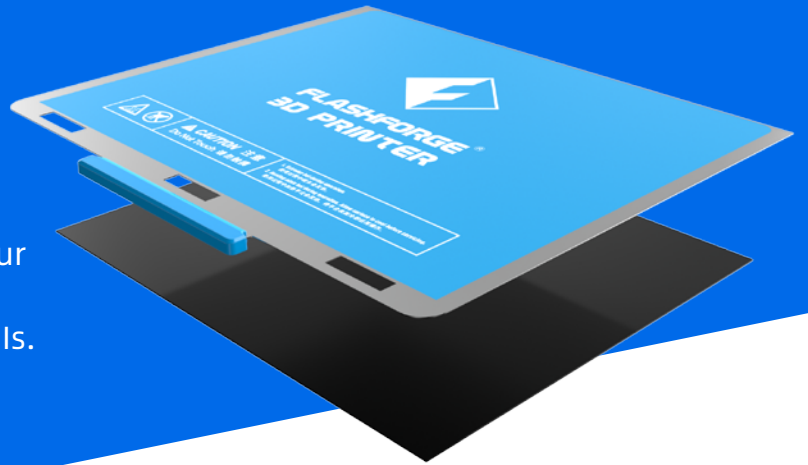
PLA METAL

PA-CF

PA-GF

New Platform, New Experience

Glass platform or flexible one, it is at your choice. So as to meet different needs. An upgrade from last version of Guider IIs. It now includes a flexible spring build plate assy, helping to take off printed models easily.

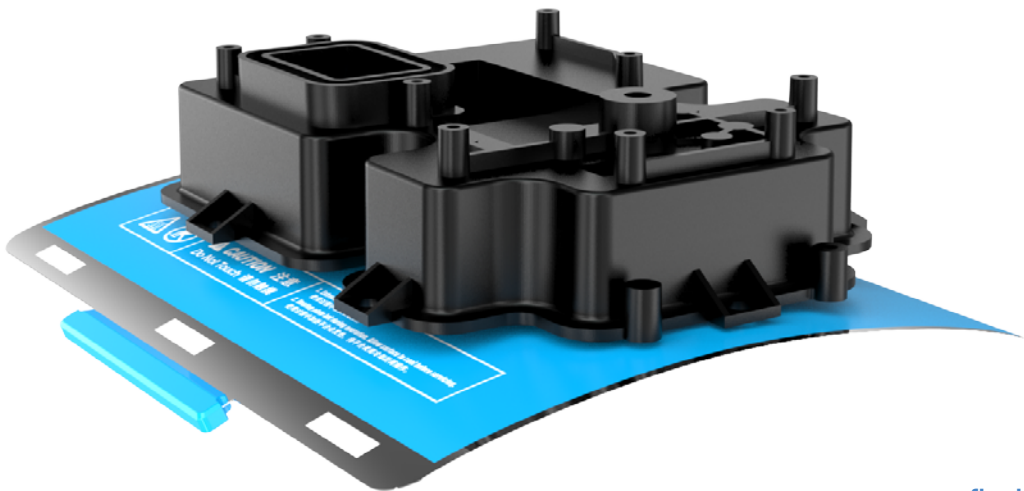


① Glass Platform

Using glass platform (without sticker) to get smoother model bottom; Suggested filament: ABS/PLA/ASA/PETG/PC

① Flexible Platform

Using flexible platform to remove models easier; Suggested filament: ABS/PLA/ASA/PETG/PA/PA-CF/PA-GF



FUNCTIONS

Heatable-platform

Auxiliary-leveling

Filament-detection

Build in-camera

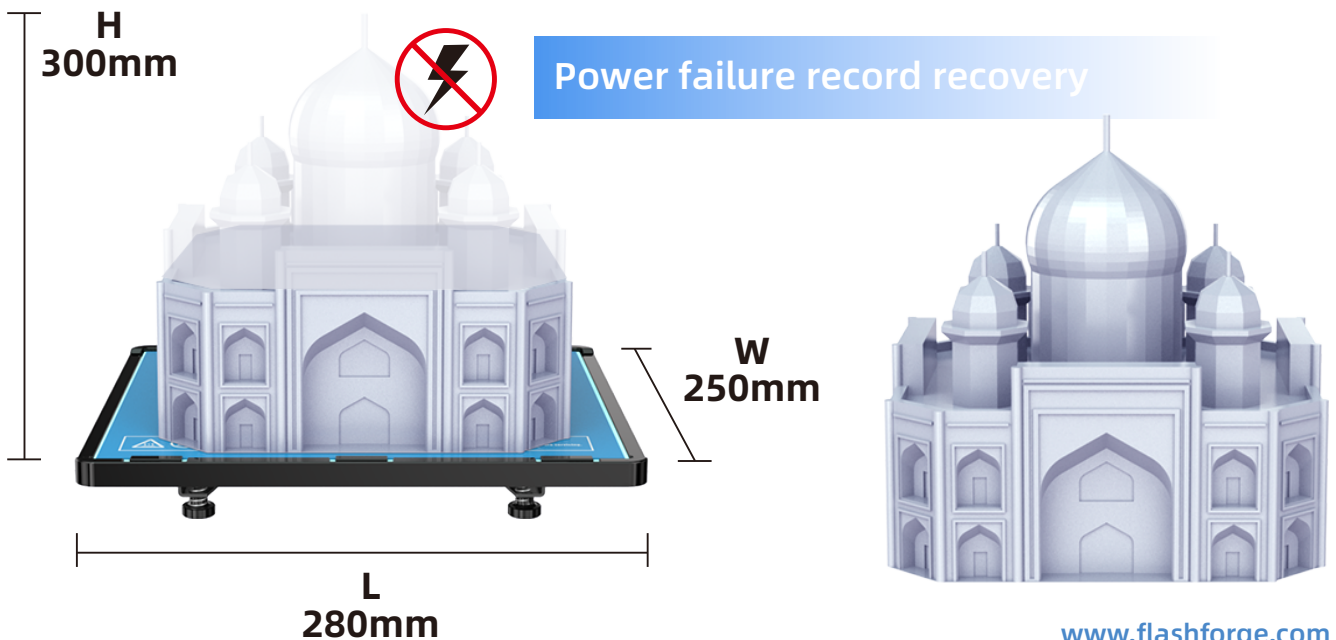
Fully-enclosed body

Resume printing

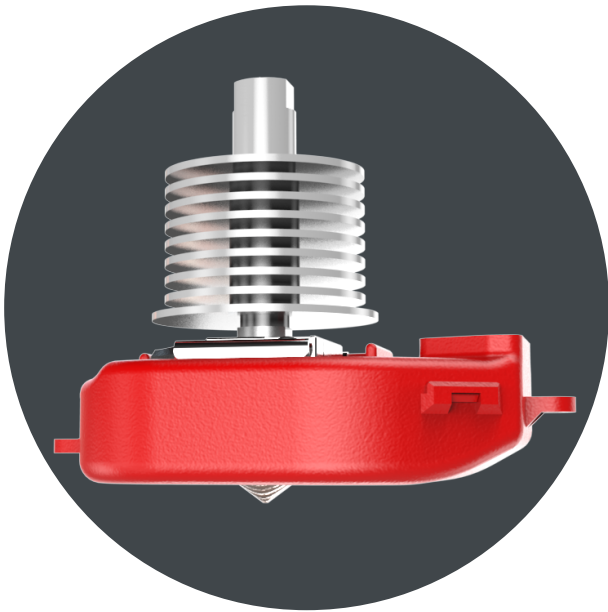
Touch screen

Wifi

Ethernet



GUIDER II S



UPDATE

The extruder of Guider II S will be upgraded to a high-temperature version.

- It can reach to 300°C, so as to support more filament printing.
- This will be updated directly on the printer at factory instead of a spare part.

**SUPPORT
FILAMENT**

ASA

PETG

PC

PA

ABS

PLA

PLA Change Color

PLA METAL

FUNCTIONS

Heatable-platform

Assisting-leveling

Filament-detection

Camera monitor

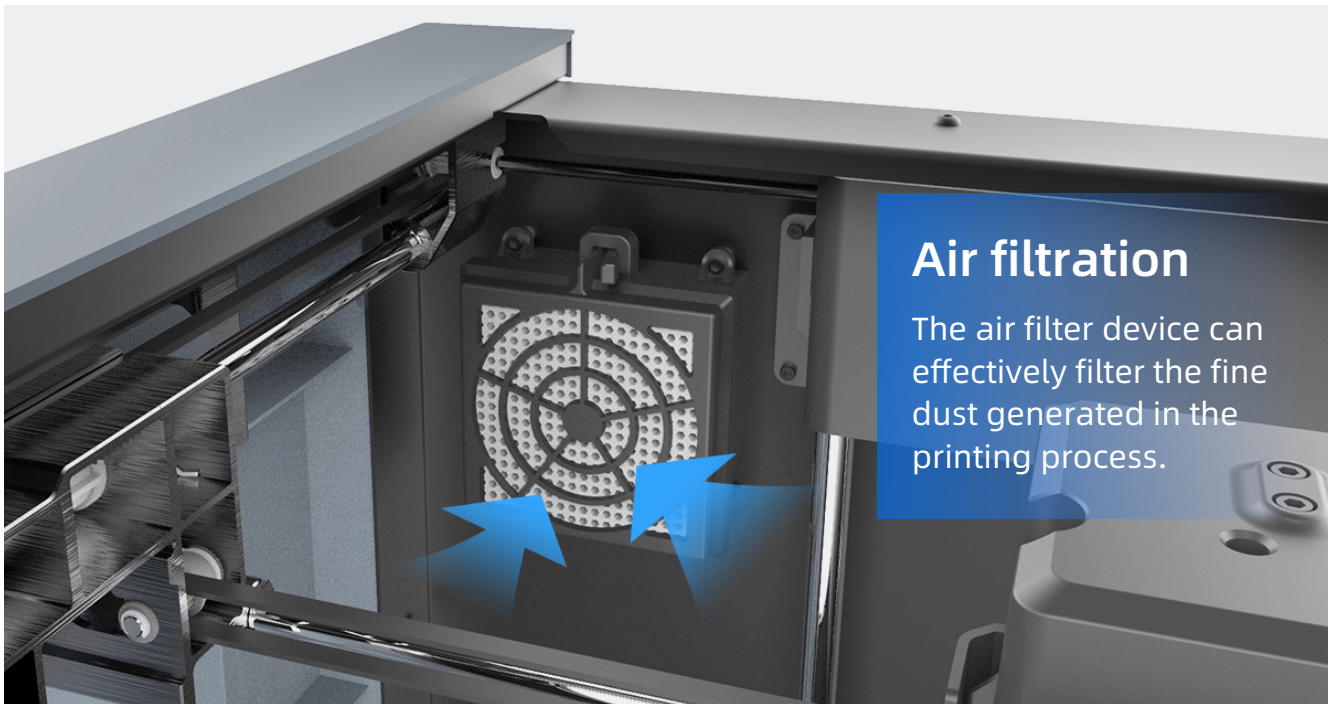
Closed body

Resume printing

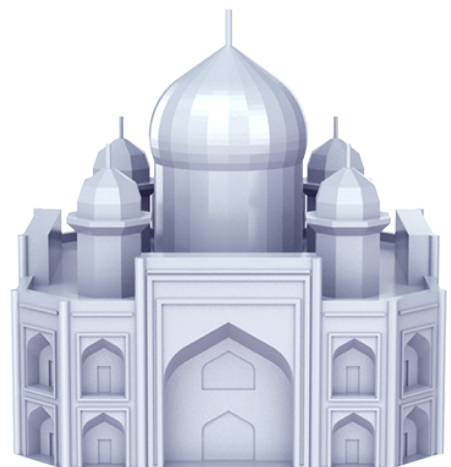
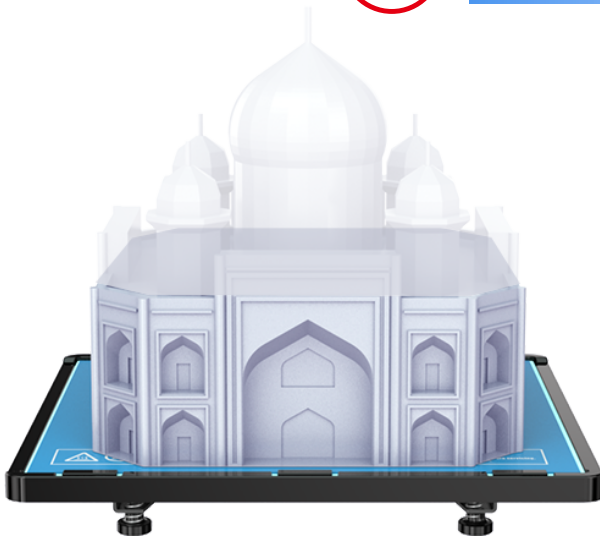
Touch screen

Wifi

Ethernet



Power failure record recovery



PRINT

Extruder number:	1
Extruder diameter:	0.4mm
Maximum set temperature of extruder:	300°C
Print Volume:	280*250*300mm
Print Speed:	10-150mm/s
Maximum set temperature of platform:	120°C

DEVICE

Printer Volume:	490*550*560mm
Screen:	5-inch Touch Screen
Net Weight:	30kg
Input:	100-240 VAC,47-63Hz
Power:	500w
Internal Storage:	8g
Spool:	External

COMMUNICATION

Data transmission:	USB cable,USB stick,Wi-Fi,Ethernet,FlashCloud,PolarCloud
Software:	FlashPrint
Output:	GX/G files
Input:	3MF/STL/OBJ/FPP/BMP/PNG/JPG/JPEG files