

ADVENTURER 4



EFFICIENT, POWERFUL, SIMPLICITY, SAFETY

It is a 3D printer with more applications and better experience. Equited with new design components and the latest technical specifications, making more efficient use of 3D printing, while empowering design innovation and integrating it into public life.

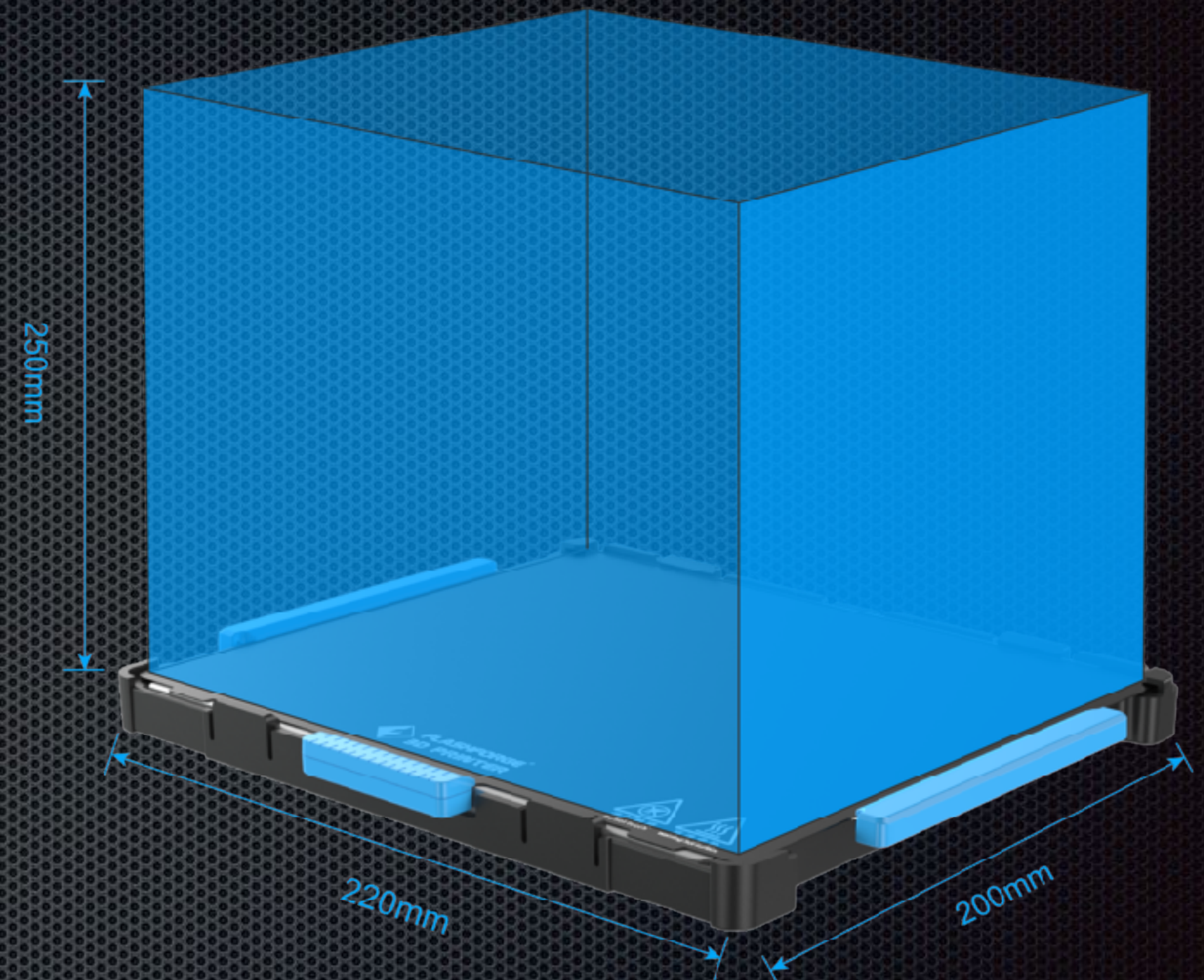
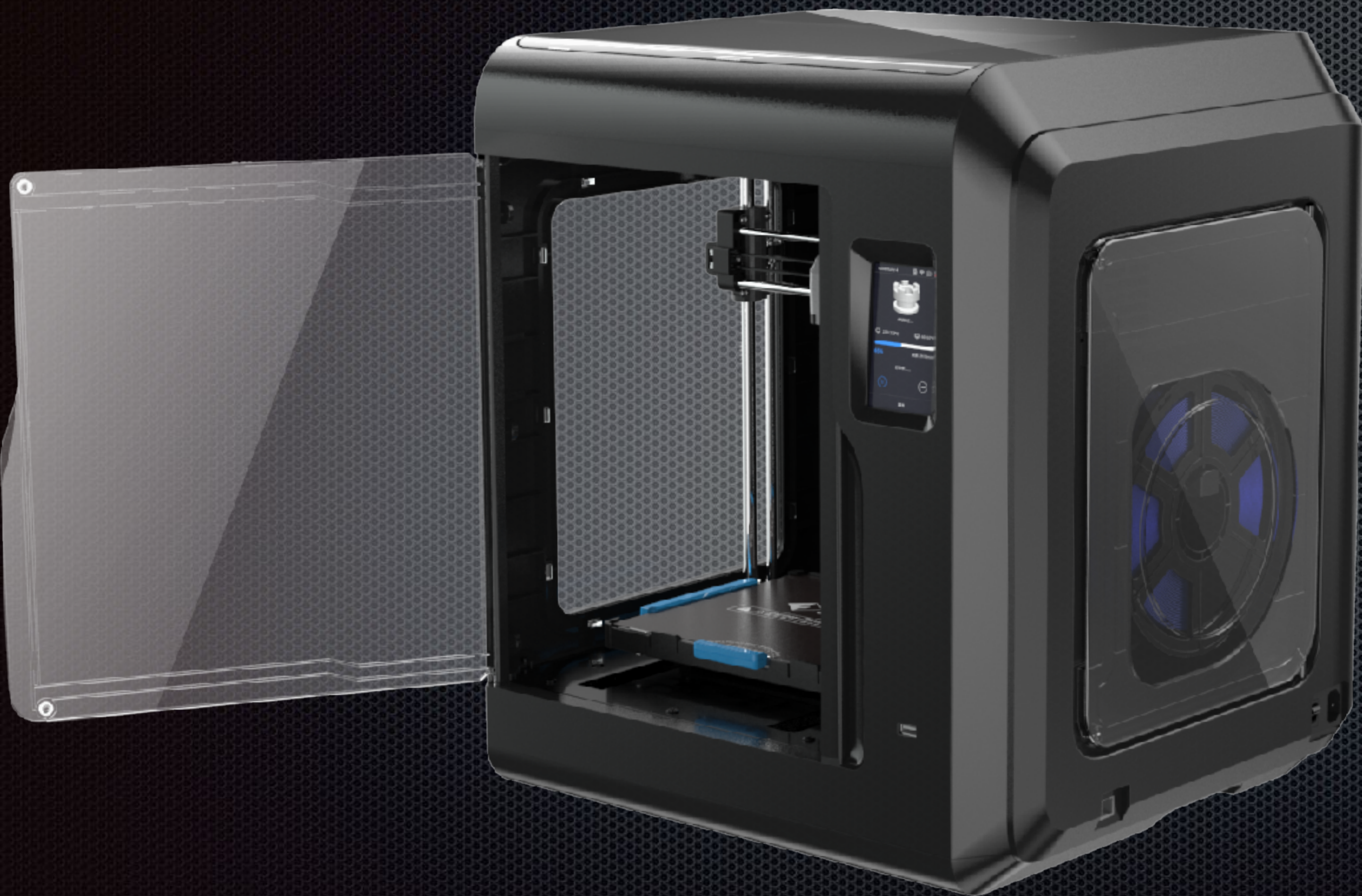
Faster, Larger, Power than ever before.

It is the next-generation powerful 3D printer, stand out features include a HEPA Filter, resume printing function, Professional level flexible removable heated print surface, built in camera, filament run out sensor, whisper quite operation, wi-fi and cloud connectivity plus the ability to easily monitor and manage multiple 3d printers at once thought the new design software. It is the ideal choice for print farms the office users and classrooms. With a 220*200*250mm build volume, it is like a work assistant, make life and work highly efficient.



220*200*250mm

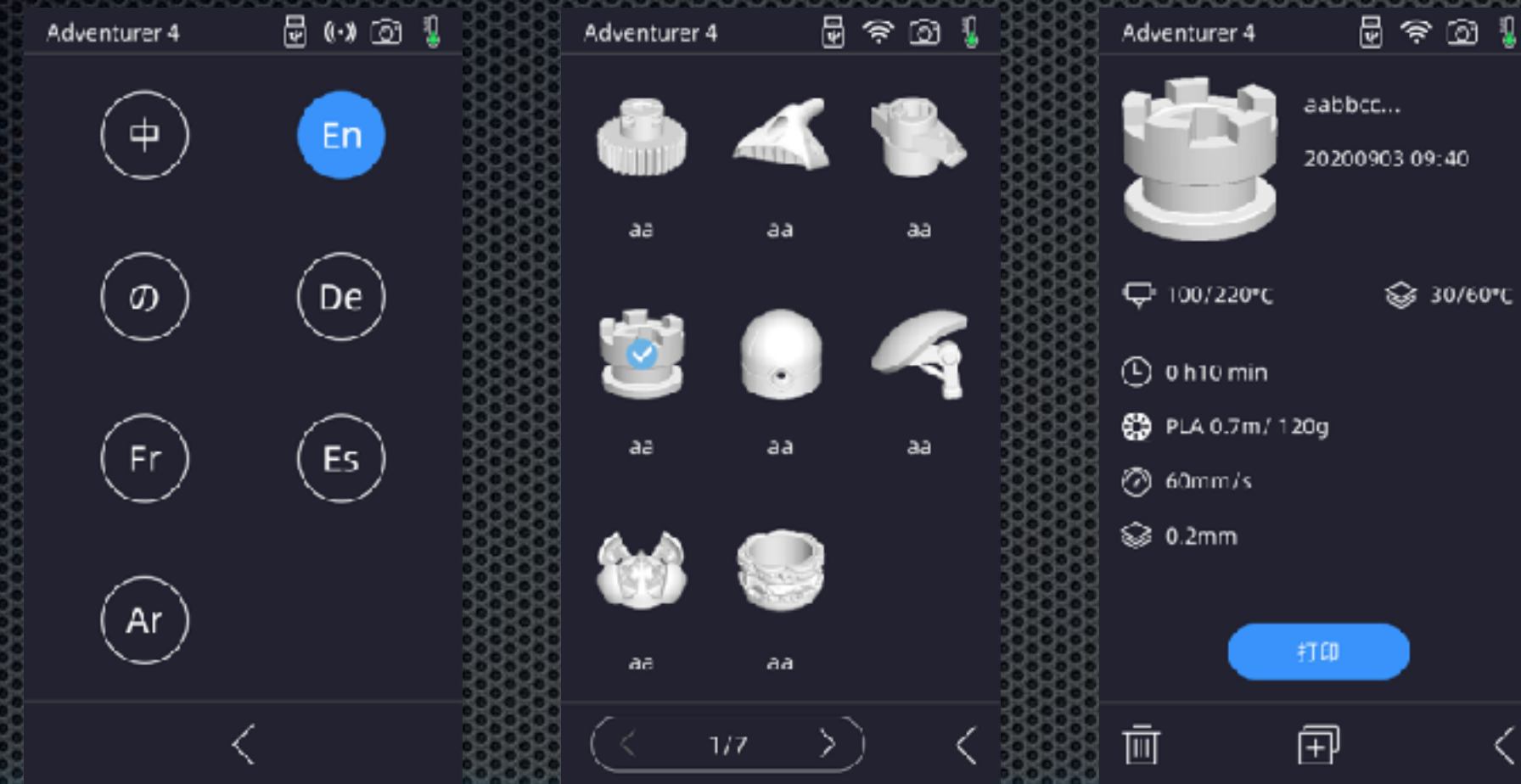
Build volume



325% expand

build volume vs Adventurer 3

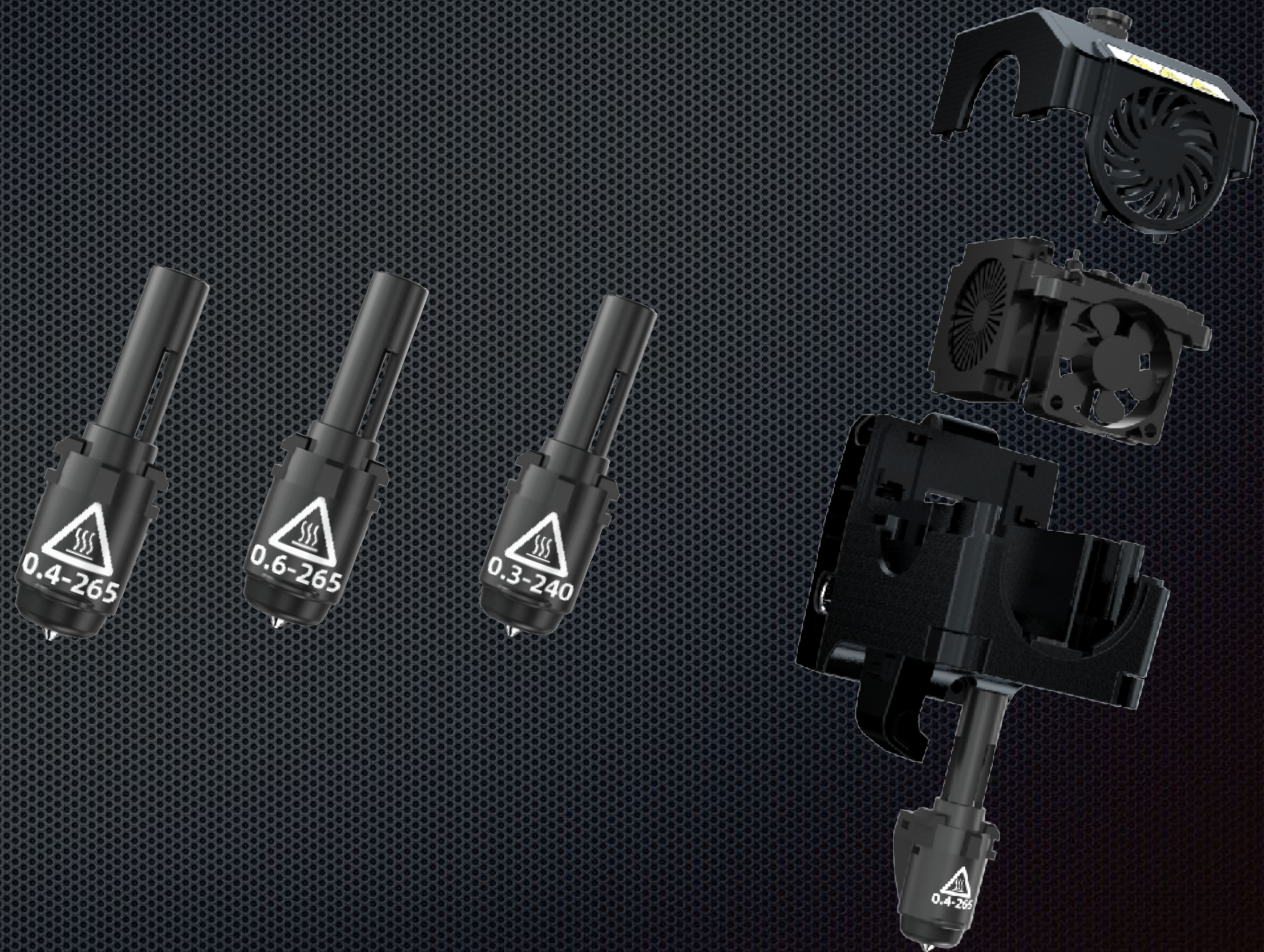
4.3 in HD(800*480) Color Touch Screen



That allows you easily and intuitively to operate the device. Available in English ,Chinese,Korean,Japanese,German,Spanish,French with a simplified and smart interface, ensures user experience always equates to smooth sailing!

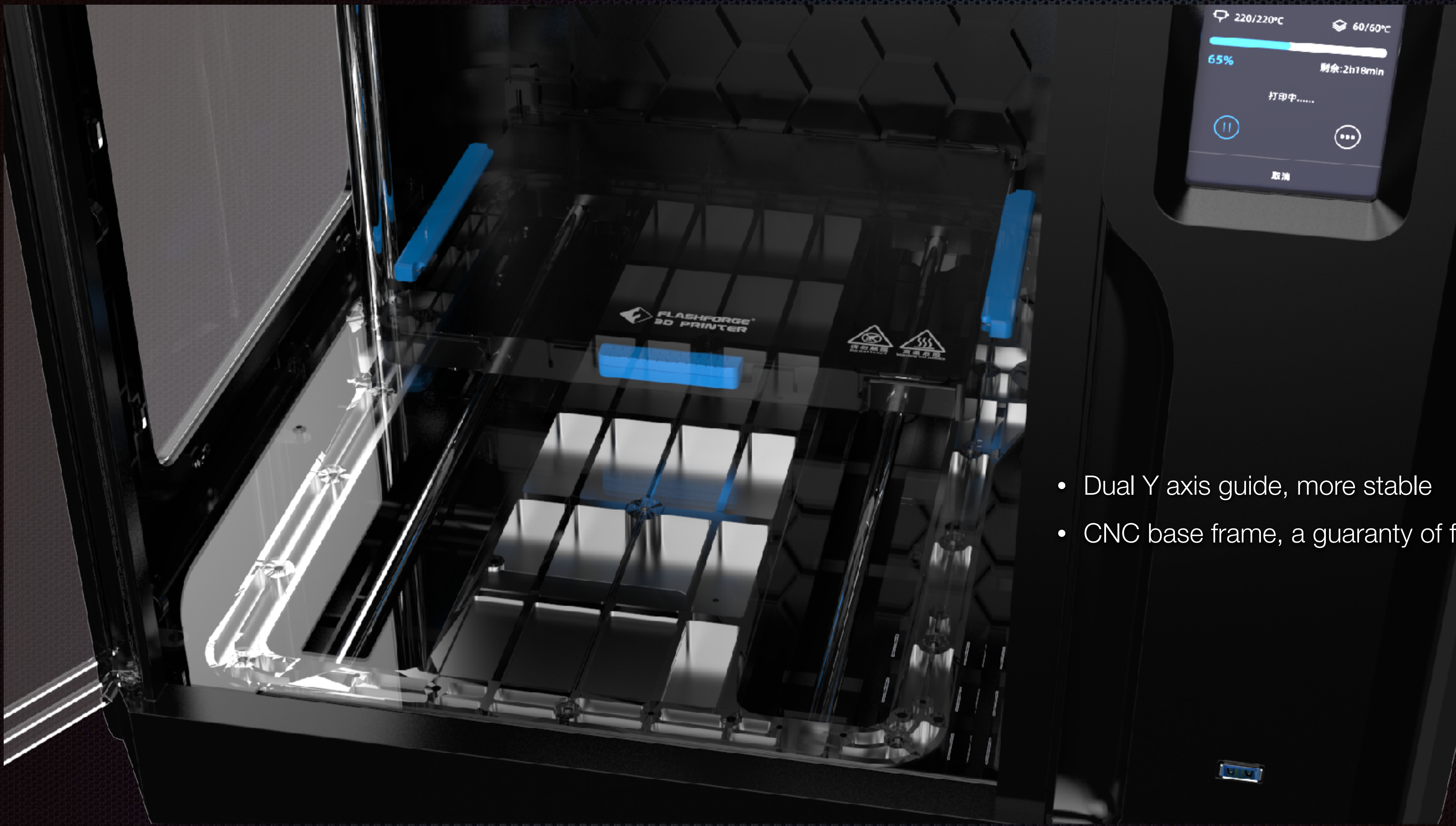
Modular design extruder

- Remove nozzle just in one clip less than 5 seconds , easy to change 0.3mm or 0.6mm nozzle.
- Maximum printing temperature at 265°C
- PLA/ABS/PC/PETG/PLA-CF/PETG-CF
- Easy to maintenance
- Dual fan control, cooling better



Leveling Free

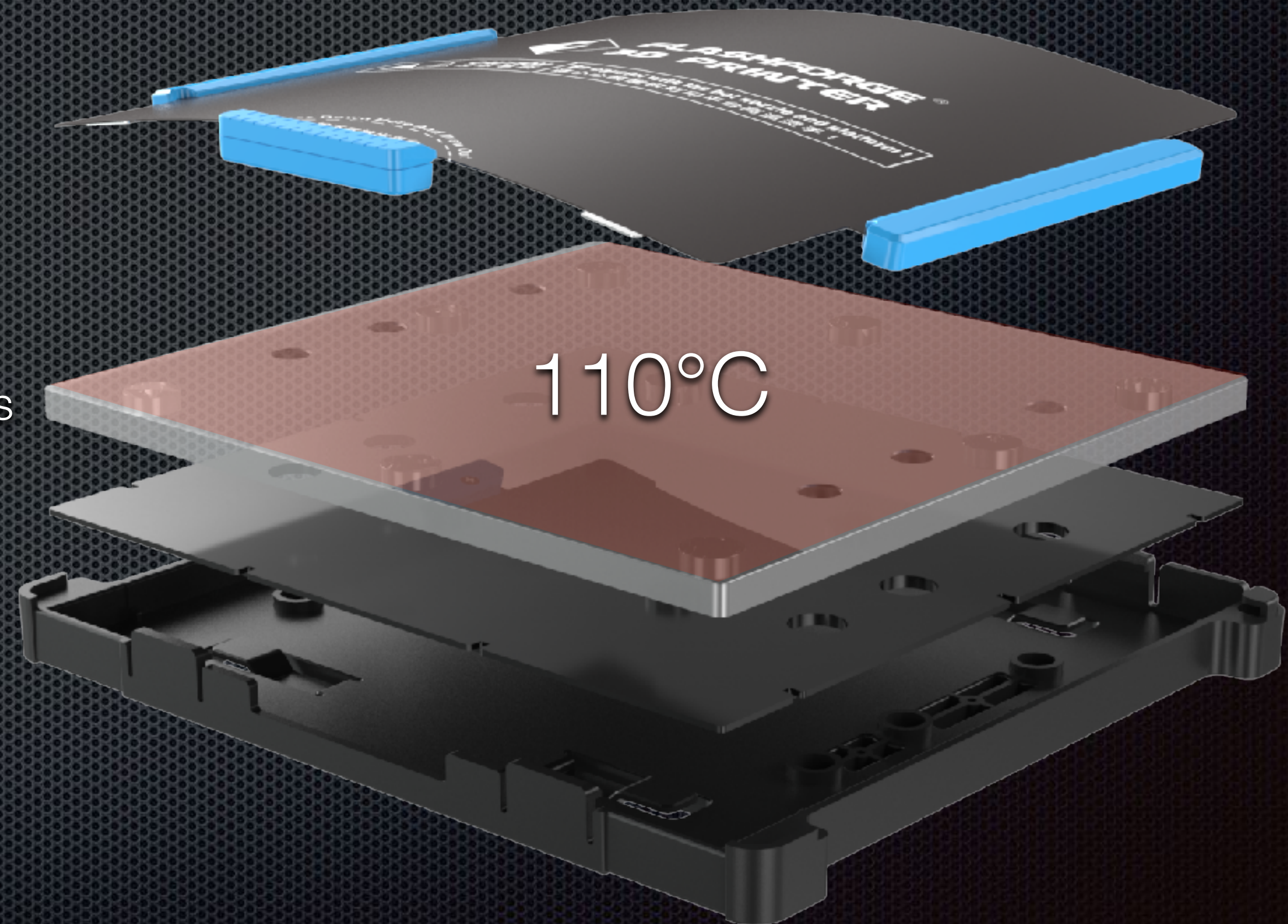
- New design build plate, more stronger, more flatness!
- 8mm CNC Aluminum plate give a guaranty of flatness.
- 9 point leveling compensation
- Two guides create a stable moving condition.



- Dual Y axis guide, more stable
- CNC base frame, a guaranty of free leveling

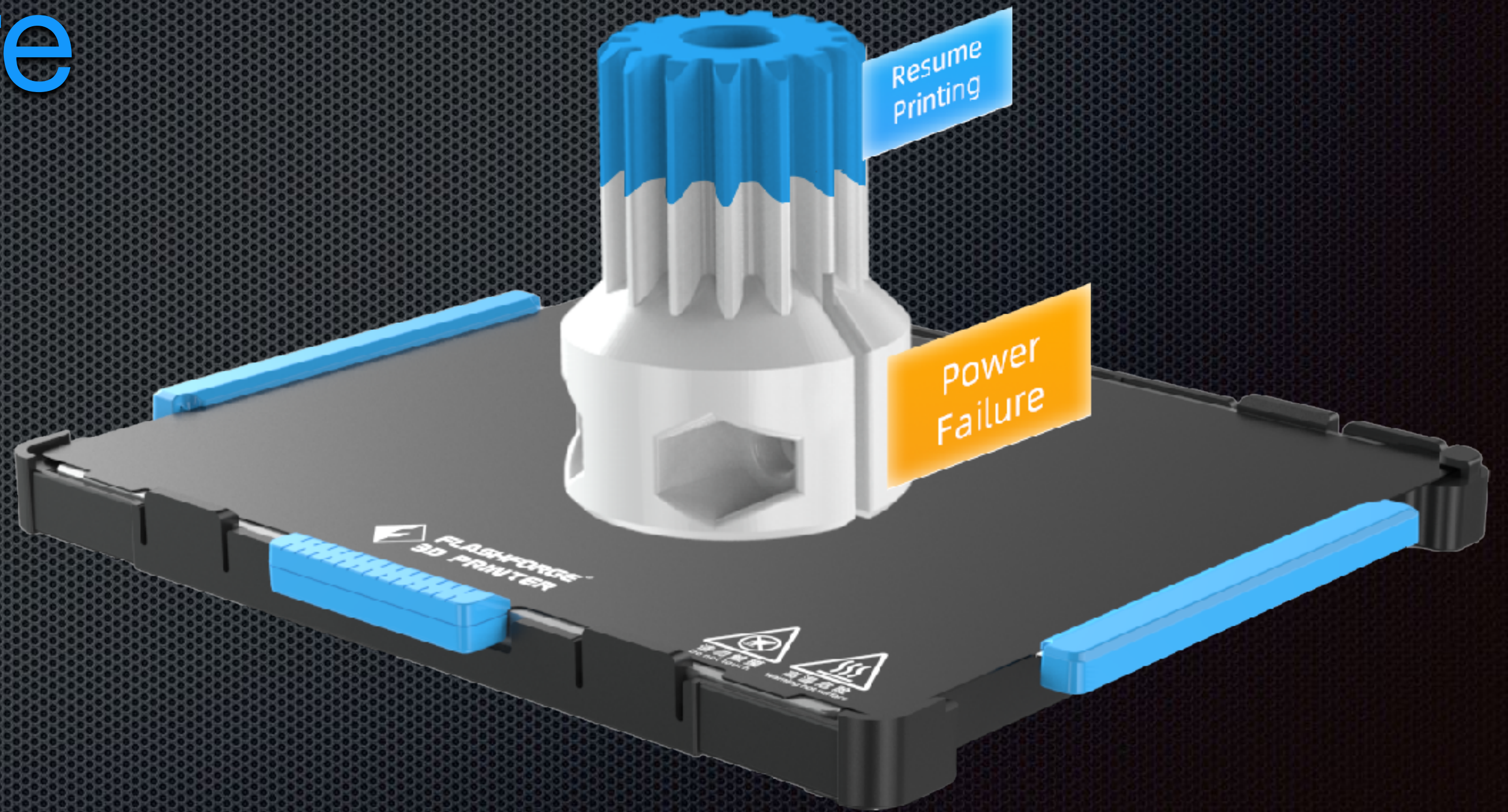
Easy to remove model

- Spring flexible plate ensures remove the model in 2 seconds;
- The bed can be heated to 110°C which enables the Adventurer 4 to be capable of printing engineering materials such as ABS/ PETG/PC



Don't have to worry about power outages anymore

In the event of a power failure during the print process, automatically detect power-loss, once power is resumed the printer shall prompt you to resume where it left off.



150mm/s

Printing speed



Multi -Communication

3D Cloud, an integral 3D printing resource platform - Get free storage(register online), backup and share files, interact with other users, automatically slice print files, free model database; online management - transfer, monitor, and manage multiple printers effortlessly



- Wifi control



- USB Stick



- Cloud printing



- 8g memory

Camera Monitor



- Send files to the Adventurer 4 from anywhere in the world.
- Live stream or record 3D prints.
- The time-lapse video looks back the print record.
- Users can remotely monitor, control, send files directly to the Adventurer 4 via a Cloud Based interface from any web enabled smart device or in flashprint software.

Shelf management

More clearer workflow for print farms

- According to material or business, group adventurer 4 and manage them at the same time.
- Check the status, slice files, check the status of multiple machines from the one interface.
- No need to walk to the side of device to check the state of printing, in your computer you can check all the things through the Flashprint software.

Groups printers by new slice software

The image displays the FlashPrint software interface, which is used for slicing 3D models and controlling multiple printers. The main window shows a 3D model of a spherical object on a grid. A sidebar on the left lists models, with 'Core_independant.stl' selected. A '开始切片' (Start Slicing) button is visible. Below the model, there is a '设备选型: 选择设备与距离' (Equipment Selection: Select device and distance) dropdown menu showing 'Creator 3 - 0.6'. A bottom toolbar contains various icons for navigation and control.

Overlaid on the main window are two smaller windows:

- 多设备控制 (Multi-Device Control):** This window shows a table of printer groups and their status. It includes buttons for '全选' (Select All), '连接设备' (Connect Device), and '断开连接' (Disconnect Device). The table lists printer models, IP addresses, dimensions, and progress percentages.
- 参数设置 (Parameter Settings):** This window allows for configuring printer parameters. It includes sections for '桥' (Bridge), '出丝量' (Extrusion), '路径' (Path), and '其他' (Other). Parameters like '桥宽' (Bridge Width), '速度' (Speed), '路径宽度' (Path Width), and '路径精度' (Path Accuracy) are adjustable. Buttons for '保存配置' (Save Configuration), '恢复默认' (Restore Default), '导入配置' (Import Configuration), '导出配置' (Export Configuration), '清除' (Clear), and '另存' (Save As) are present.

- smooth operation;
- More experts set
- G file preview function
- Groups printers
- slicing software can directly monitor the modification of equipment parameters

More details focus

Environment Friendly

Full enclosure

HEPA 13 air filter

2 way compound filter consisting of 80*80mm HEPA 13 / Carbon Filter and Activated Charcoal Filter to reduce Odor and VOCs down to 0.1 microns generated whilst 3D printing. Ideally suited to classroom and domestic environments.





50 Decibel

It is achieved through the combination of a full enclosure and a near silent motion system, making it the ideal choice for home users , as well as print farms and multiple machine classroom environments.

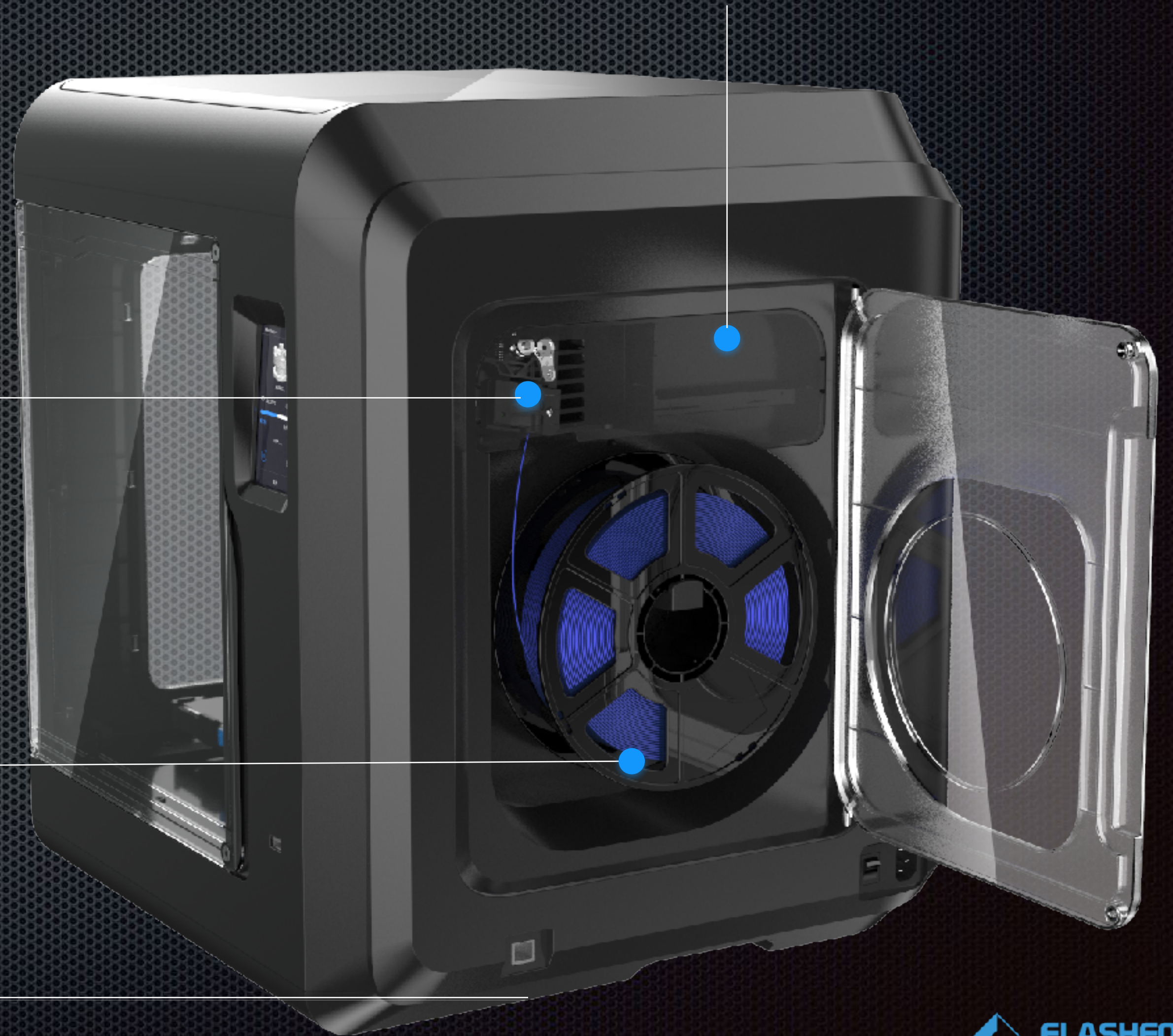
Details

Tool storehouse is more convenient and quickly to get the tools for maintenance

Equipped with a filament runout sensor, those who are looking to print a large object can now print without fear. This will prevent unfinished prints and “air printing”. Once it realizes that the filament has run out, the touchscreen will notify you to load a new filament and allow you to resume printing immediately.

Auto filament feeding with an enclosed built-in filament cartridge;
open filament;
1KG Filament spool holder

Standby low power consumption design



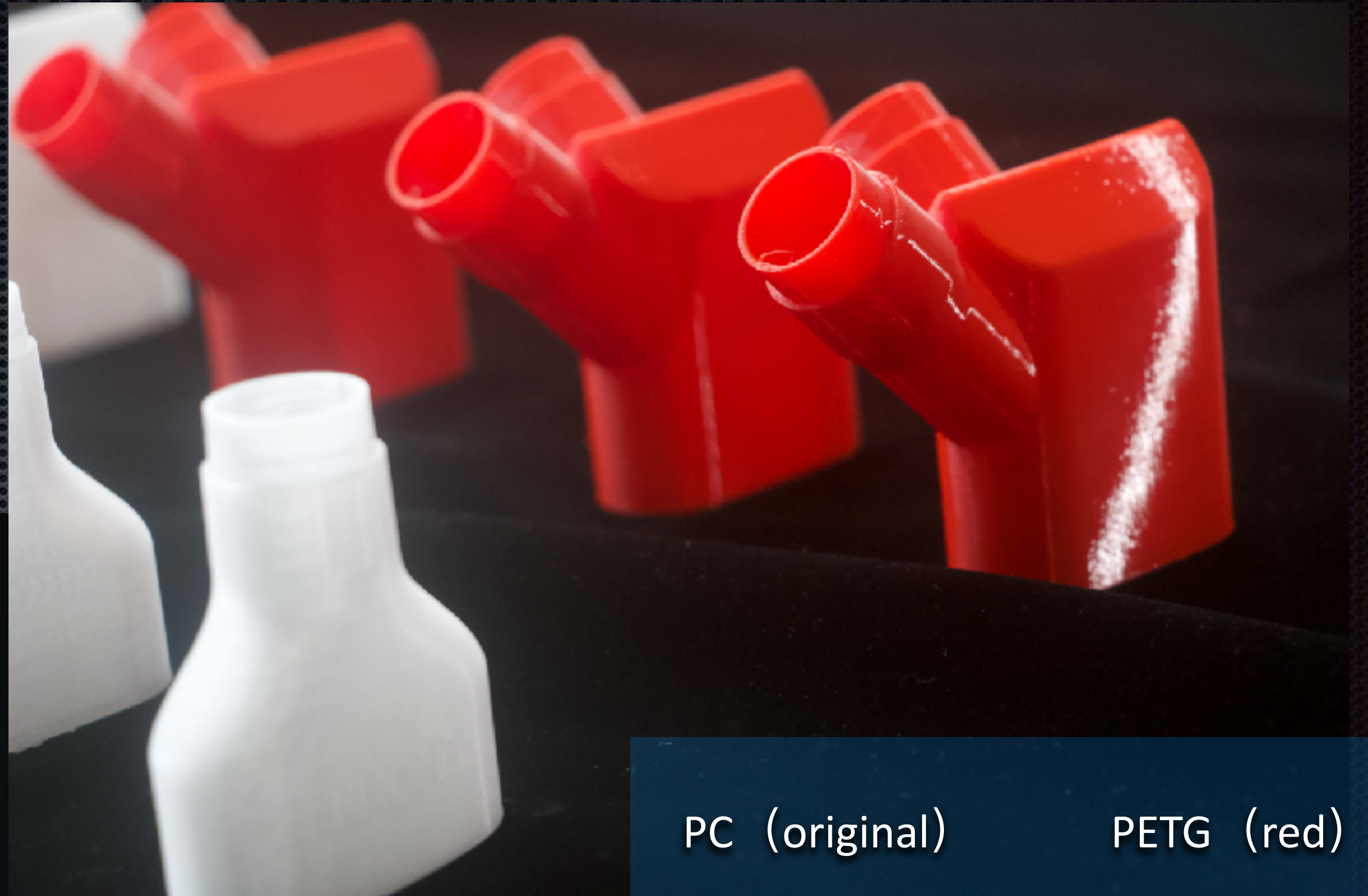
PLA-CF/ PETG-CF



The requirements of toughness, durability or high temperature resistance of mechanical parts, as well as the surface finish or delicate texture of artistic creativity. AD4 is a strong supporter



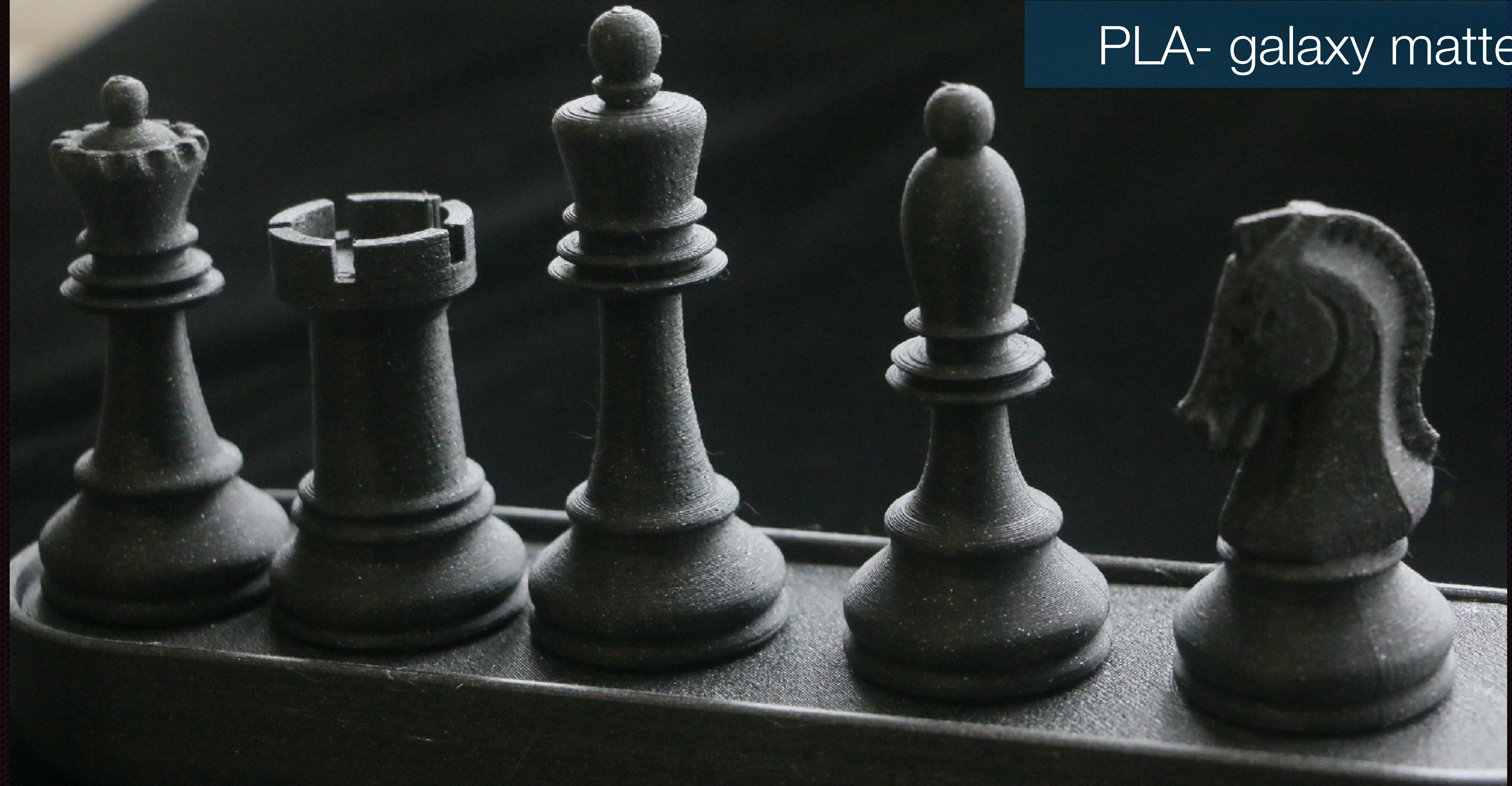
A glossy surface of the model



PC (original)

PETG (red)

PLA- galaxy matte





PLA-CF



ABS



Silk-White



Silk



PETG-PRO



Galaxy Matte

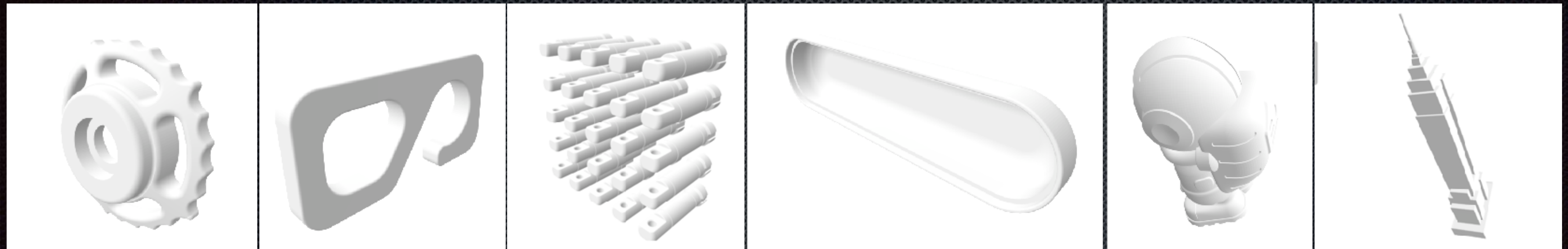


PC



PETG-CF

Wide range of applications

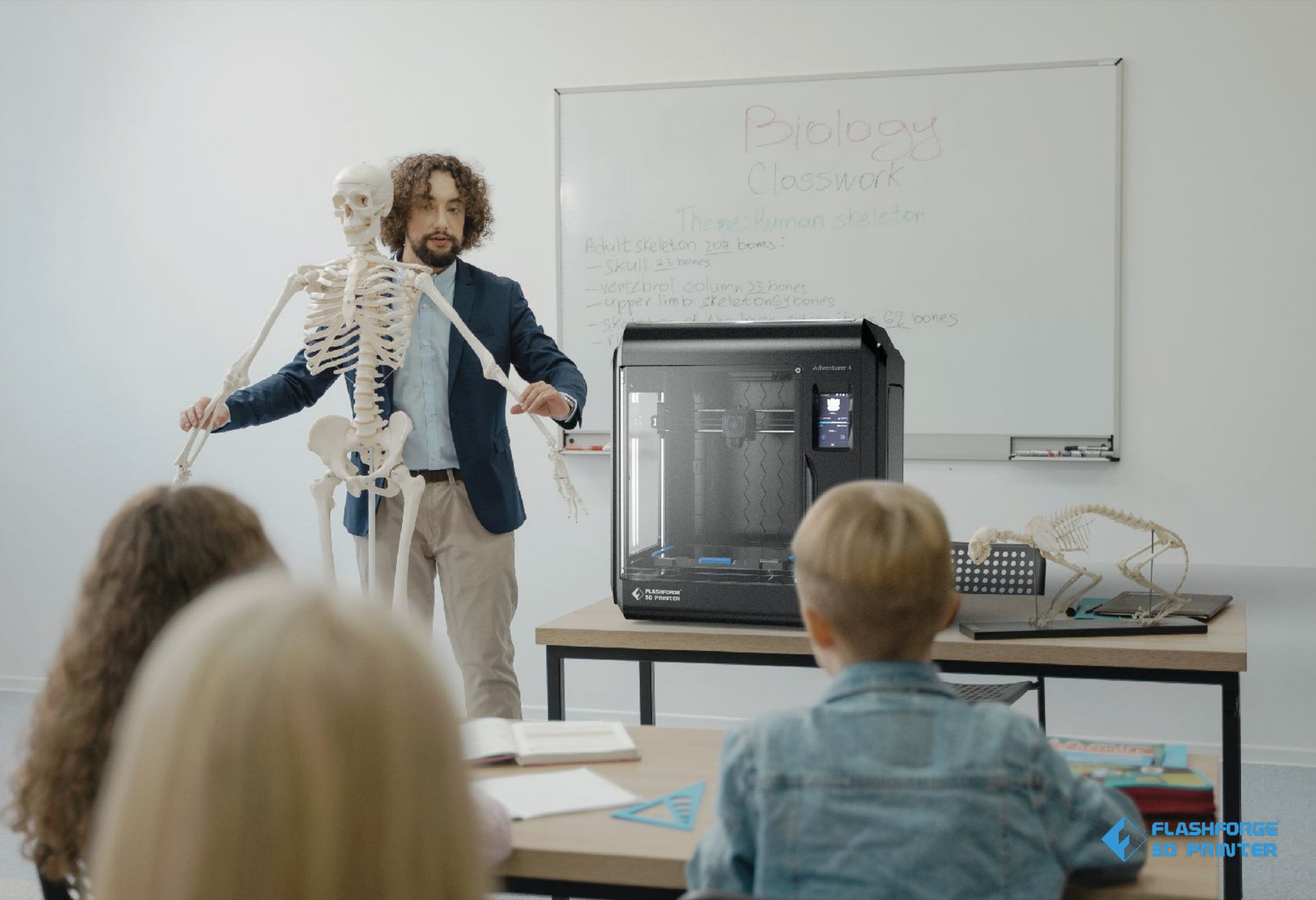


From engineering work needed mechanical parts, creative design, repair the daily objects, making the toys for children or education tool, Adventurer 4 making it available to every creative mind out there.

workshop

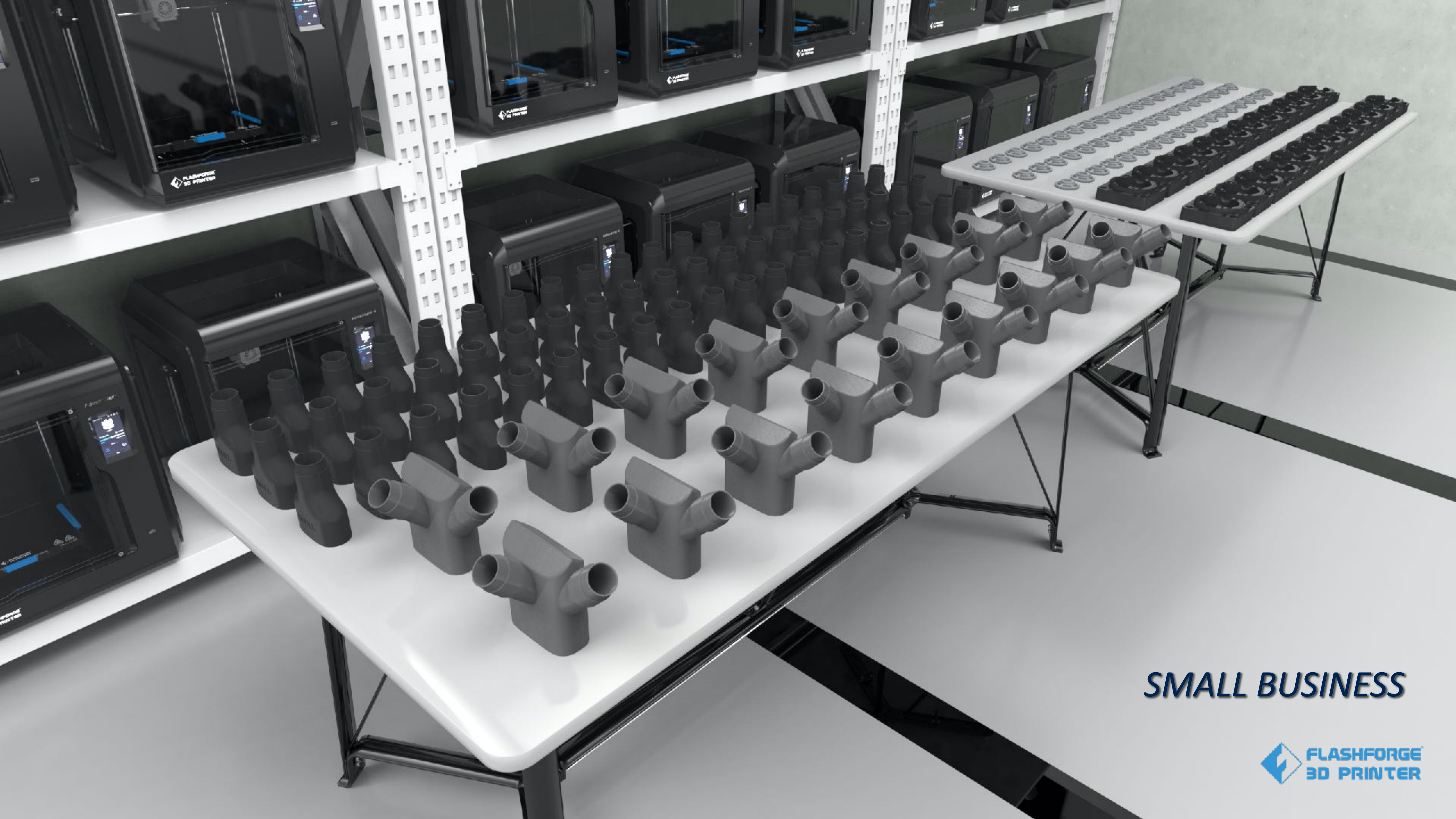


EDUCATION



LEARNING





SMALL BUSINESS

