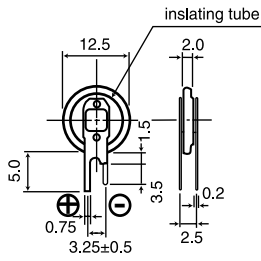


VL1220

■ Dimensions(mm)

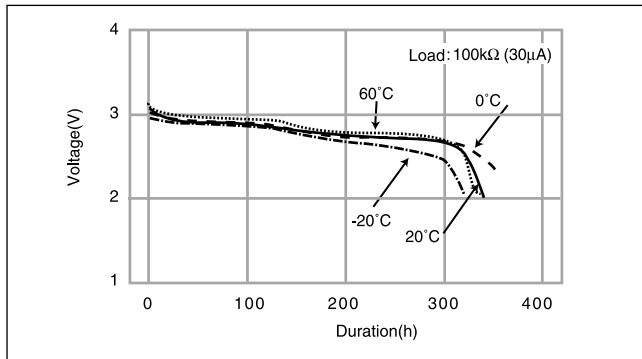
(VL1220 / 1F5U)



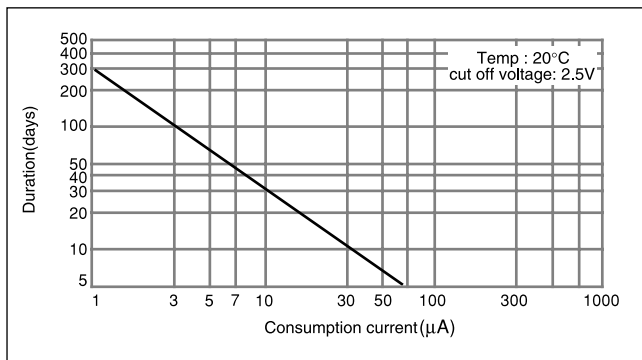
■ Specification

| | |
|-------------------------------------|-----------|
| Nominal voltage(V) | 3 |
| Nominal capacity(mAh) | 7.0 |
| Continuous standard load(mA) | 0.03 |
| Operating temperature(°C) | -20 ~ +60 |

■ Discharge Temperature Characteristics



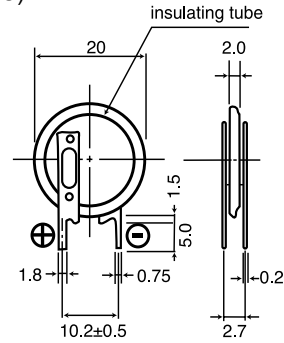
■ Consumption current vs. Duration time



VL2020

■ Dimensions(mm)

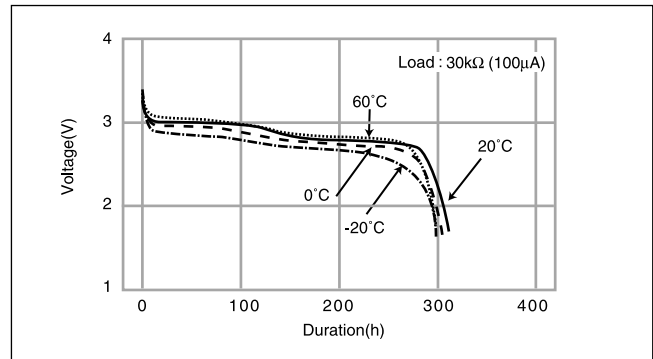
(VL2020 / 1VC)



■ Specification

| | |
|-------------------------------------|-----------|
| Nominal voltage(V) | 3 |
| Nominal capacity(mAh) | 20.0 |
| Continuous standard load(mA) | 0.07 |
| Operating temperature(°C) | -20 ~ +60 |

■ Discharge Temperature Characteristics



■ Consumption current vs. Duration time

