

## Industrial fuses

Order code	Manufacturer code	Description
26-5880	24202	SINGLE POLE DIN RAIL FUSEHOLDER

Industrial fuses	Page 1 of 2
The enclosed information is believed to be correct, Information may change 'without notice' due to product improvement. Users should ensure that the product is suitable for their use. E. & O. E.	Revision A 04/07/2003

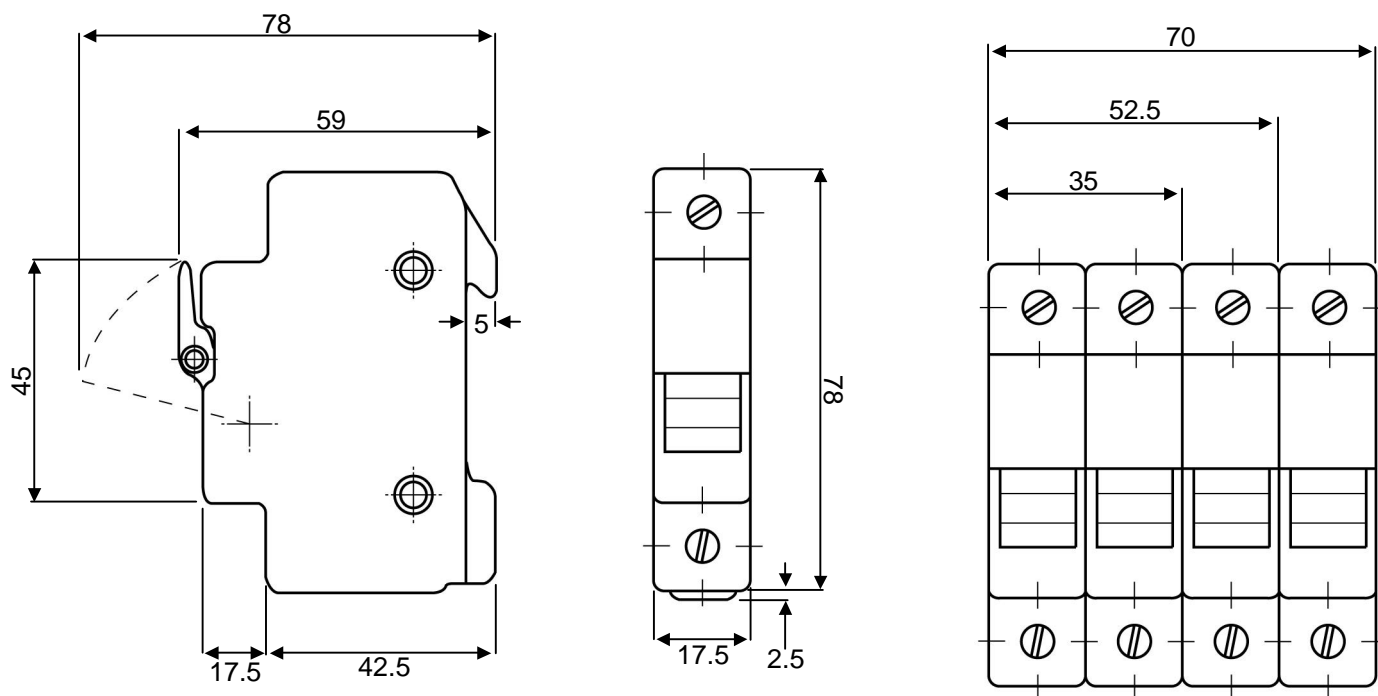
## Fuses and Circuit Breakers

### Single Pole Din Rail Fuse Holders

DIN rail mounting fuse holder to accommodate industrial fuses 10 x 38mm as well as North American Class CC and Midget 1 ½x 13/32" fuses. It incorporates an operating handle for non-load disconnection and electrical isolation for fuse replacement without tools. This fuse holder is not suitable for Ultra Rapid 25A and 30A fuses.

**Voltage rating:** 690Vac (500Vac @ 25A, 400Vac @ 32A)

**Dimensions (mm):**



**Standards:** IEC 269-2-1/947, NFC 63.001/63.210, UNE 21103-2-1, 269-2-1, 947-3

**Approvals:** Bureau Veritas/Lloyds Register of Shipping