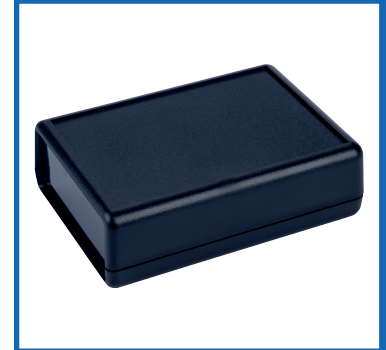


ABS Handheld Enclosure Black 92 x 66.5 x 21mm c/w Battery Compartment & Infrared End Panel



DESCRIPTION

A black textured impact-resistant ABS enclosure with a recessed area in the lid. Includes battery compartment and infrared end panel.

DISTINCTIVE FEATURES

- Recessed area in lid suitable for membrane keypad use or label
- Battery compartment for 2x AAA batteries
- Infrared end panel
- PCB Pillars and slots included in base and lid
- Lid is retained by 4 self-tapping screws
- Finished in black RAL9004

APPLICATIONS

The dimensions of this enclosure make it ideal for portable devices such as remote controls, scientific devices, test equipment and communication equipment.

ABS

UL94-
HB

RAL
9004

Battery
Compartment

Infrared
End Panel



GENERAL SPECIFICATION

Series	Handheld Enclosures
Type	General Purpose Enclosure
Screws	Qty 4 ⊕M3 x 21mm
Internal Features	Infrared end panel, PCB Mounting
External Features	Recessed panel in lid



MATERIALS

Material	ABS
Finish	Matt
Colour Including RAL Number	Black RAL9004
Screws	Black, nickel plated



ENVIRONMENTAL/OPERATING SPECIFICATION

Flame Resistance	UL94-HB
IP Rating	Enclosures are designed to meet the requirements of IP20 (minimum)
Operating Temperature	-20°C to +65°C



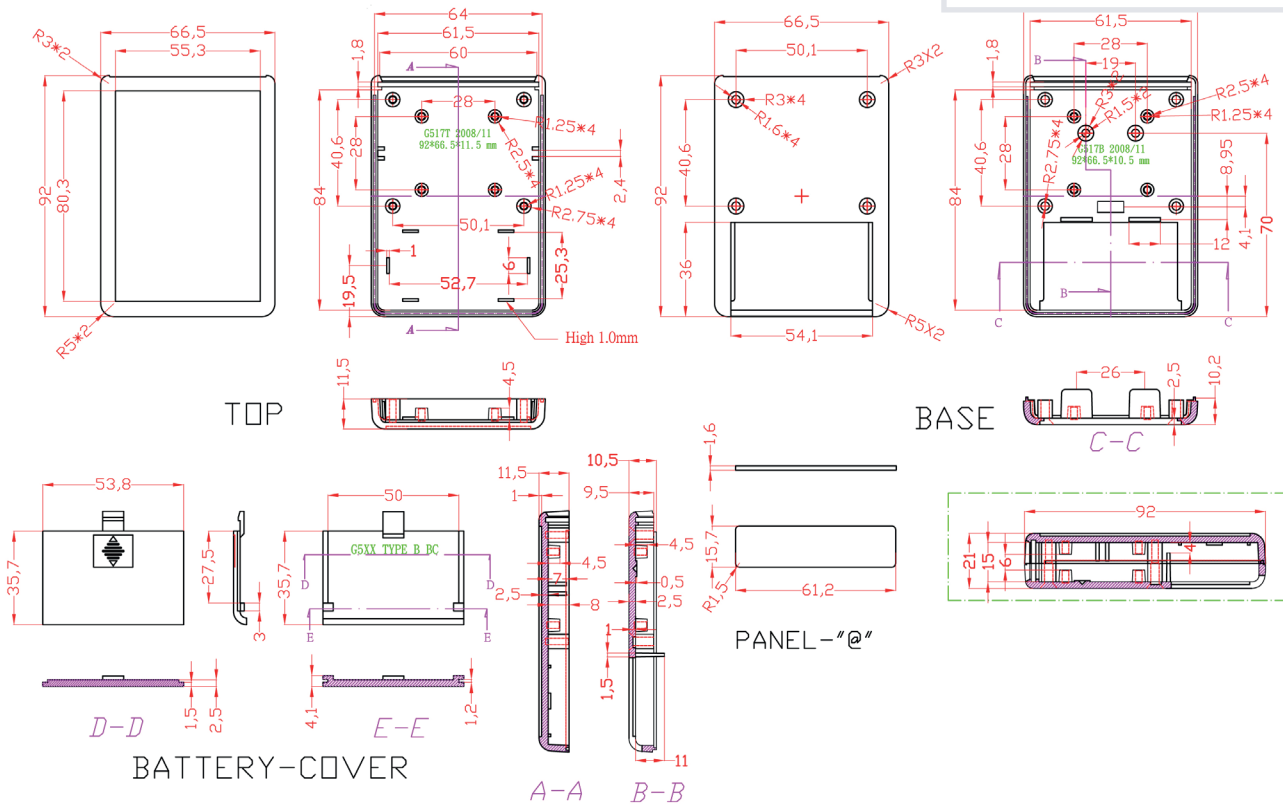
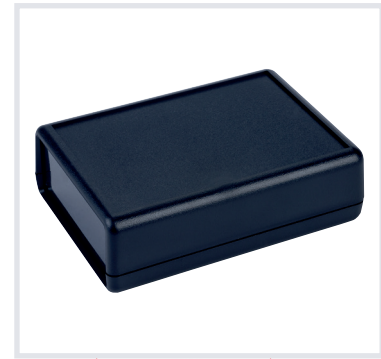
OPTIONS (MOQ may apply)

Colour	Grey RAL7035
--------	--------------



DIMENSIONS/DRAWINGS

Units	mm - unless stated otherwise
Dimensions	92 x 66.5 x 21mm
Wall Thickness	2.5mm
Weight	48g



PART NUMBER TABLE

Part Number	EAN	UNSPSC	Country of Origin
30-0392	5053556002733	39121324	Taiwan

R-TECH

Tried & trusted technology

Important Notice: This data sheet and its contents (the "Information") belong to Rapid Electronics Limited or are licensed to it. No licence is granted for the use of it other than for information purposes in connection with the products to which it relates. No licence of any intellectual property rights is granted. The Information is subject to change without notice and replaces all data sheets previously supplied. The Information supplied is believed to be accurate but Rapid Electronics Limited assumes no responsibility for its accuracy or completeness, any error in or omission from it or for any use made of it. Users of this data sheet should check for themselves the Information and the suitability of the products for their purpose and not make any assumptions based on information included or omitted. Liability for loss or damage resulting from any reliance on the Information or use of it (including liability resulting from negligence or where Rapid Electronics Limited were aware of the possibility of such loss or damage arising) is excluded. This will not operate to limit or restrict Rapid Electronics Limited's liability for death or personal injury resulting from its negligence.