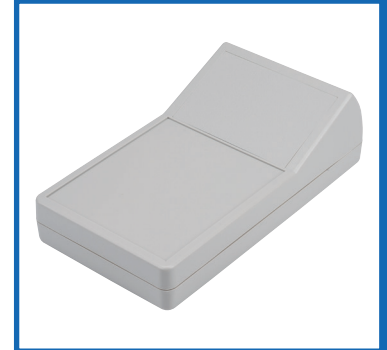


## ABS Handheld Enclosure Sloped Grey 189 x 104.5 x 59mm



### DESCRIPTION

A grey textured impact-resistant ABS enclosure with sloping panel.

### DISTINCTIVE FEATURES

- Sloping panel with cutout is ideal for displays
- Lid is retained by 4 self-tapping screws
- PCB Pillars and slots included in base and lid
- Finished in grey RAL7035
- Insert area for label
- Supplied with a windowed panel & a solid panel

### APPLICATIONS

Ideal for hand-held meters, test equipment and portable devices that require a display.

ABS

UL94-  
HB

RAL  
7035



## GENERAL SPECIFICATION

Series	Handheld Enclosures
Type	General Purpose Enclosure
Screws	Qty 4 ⊕ M2.6 x 16mm
Internal Features	PCB Mounting
External Features	Sloping panel



## MATERIALS

Material	ABS
Finish	Matt
Colour Including RAL Number	Grey RAL7035
Screws	Zinc plated



## ENVIRONMENTAL/OPERATING SPECIFICATION

Flame Resistance	UL94-HB
IP Rating	Enclosures are designed to meet the requirements of IP20 (minimum)
Operating Temperature	-20°C to +65°C



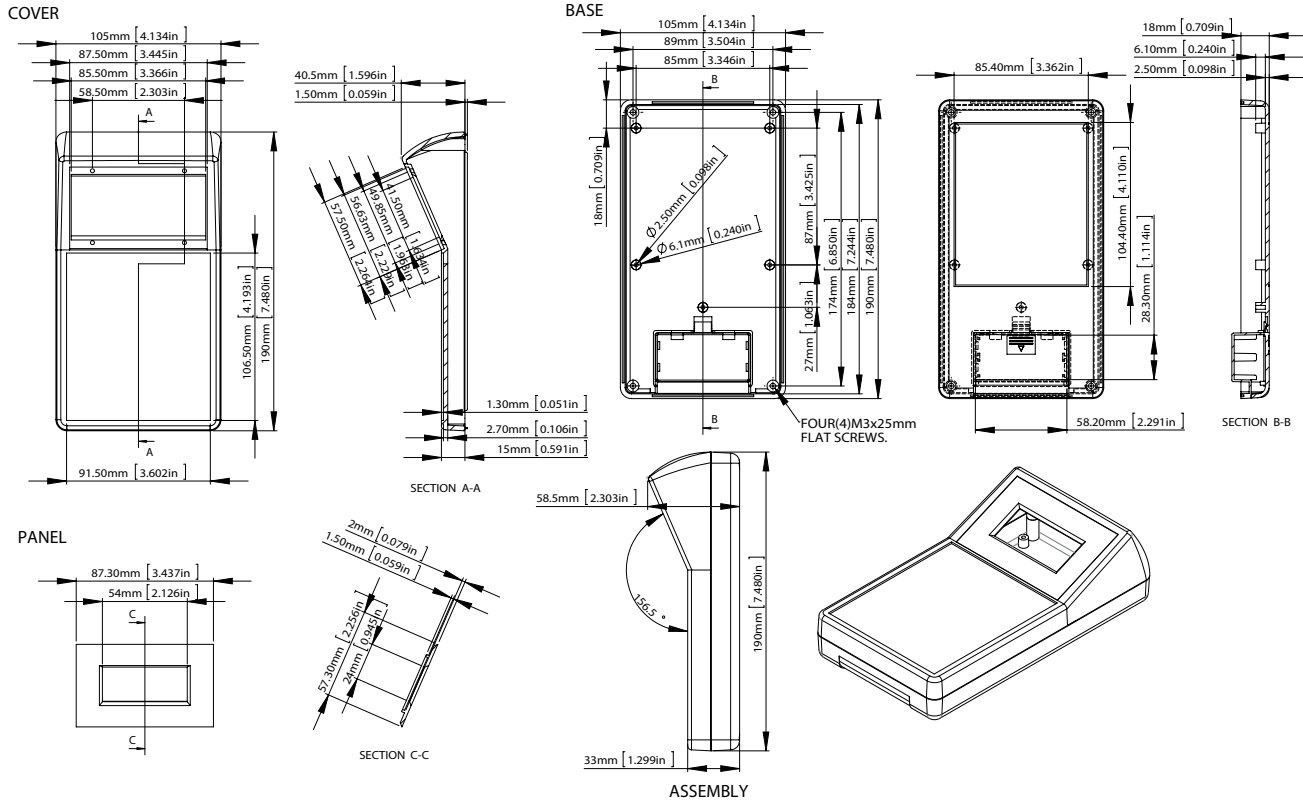
## OPTIONS (MOQ may apply)

Colour	Black RAL9004
--------	---------------



## DIMENSIONS/DRAWINGS

Units	mm - unless stated otherwise
Dimensions	189 x 104.5 x 59mm
Wall Thickness	3mm
Weight	13g



## PART NUMBER TABLE

Part Number	EAN	UNSPSC	Country of Origin
30-0396	5053556002771	39121324	Taiwan

# R-TECH

Tried & trusted technology

**Important Notice:** This data sheet and its contents (the "Information") belong to Rapid Electronics Limited or are licensed to it. No licence is granted for the use of it other than for information purposes in connection with the products to which it relates. No licence of any intellectual property rights is granted. The Information is subject to change without notice and replaces all data sheets previously supplied. The Information supplied is believed to be accurate but Rapid Electronics Limited assumes no responsibility for its accuracy or completeness, any error in or omission from it or for any use made of it. Users of this data sheet should check for themselves the Information and the suitability of the products for their purpose and not make any assumptions based on information included or omitted. Liability for loss or damage resulting from any reliance on the Information or use of it (including liability resulting from negligence or where Rapid Electronics Limited were aware of the possibility of such loss or damage arising) is excluded. This will not operate to limit or restrict Rapid Electronics Limited's liability for death or personal injury resulting from its negligence.