

# BC 107,6 DEV-KIT KMGY - Housing set

2202525

<https://www.phoenixcontact.com/pc/products/2202525>

Please be informed that the data shown in this PDF document is generated from our online catalog. Please find the complete data in the user documentation. Our general terms of use for downloads are valid.



DEV-KIT BC 107,6: contains 1 x BC 107,6 housing and PCB terminal blocks (MKDS), supplied in individual parts

## Your advantages

- Standard-compliant housing according to DIN 43880 with overall width of 107,6 mm
- PCB terminal blocks with 5 mm pitch, conductor cross section 1.5 mm<sup>2</sup>
- Optional perboard for soldering THT components by hand
- Connection of individual housing modules with each other by means of the optional HBUS via DIN rail

## Commercial data

Item number	2202525
Packing unit	1 pc
Minimum order quantity	1 pc
Product key	ACHBAC
GTIN	4055626141756
Weight per piece (including packing)	173.2 g
Weight per piece (excluding packing)	24.98 g
Customs tariff number	85369010
Country of origin	DE

# BC 107,6 DEV-KIT KMGY - Housing set

2202525

<https://www.phoenixcontact.com/pc/products/2202525>

## Set consists of

### BC 107,6 UT HBUS BK - Mounting base housing

2896270

<https://www.phoenixcontact.com/pc/products/2896270>



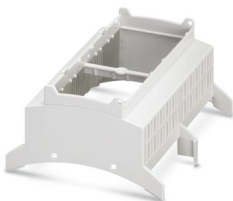
DIN rail housing for use in distribution boards in accordance with DIN 43880, Lower housing part with base latch, width: 107.6 mm, height: 89.7 mm, depth: 48.9 mm, color: black (similar RAL 9005), cross connection: DIN rail connector (optional), number of positions cross connector: 16

---

### BC 107,6 OT U11 KMGY - Upper housing part

2896076

<https://www.phoenixcontact.com/pc/products/2896076>



DIN rail housing for use in distribution boards in accordance with DIN 43880, Upper housing part (U11) with vents, Installation depth connection technology: 11.1 mm, width: 107.6 mm, height: 89.7 mm, depth: 54.85 mm, color: light gray (similar RAL 7035)

## BC 107,6 DEV-KIT KMGY - Housing set

2202525

<https://www.phoenixcontact.com/pc/products/2202525>



### BC 107,6 DKL R KMGY - Housing cover

2896173

<https://www.phoenixcontact.com/pc/products/2896173>



DIN rail housing for use in distribution boards in accordance with DIN 43880, Latching cover (non-detachable), width: 107.6 mm, height: 45 mm, depth: 8 mm, color: light gray (similar RAL 7035)

---

### BC 53,6 BS U11 KMGY - Filler plug

2896225

<https://www.phoenixcontact.com/pc/products/2896225>



DIN rail housing for use in distribution boards in accordance with DIN 43880, Filler plug for unoccupied terminal points (U11), width: 53.6 mm, height: 27.27 mm, depth: 11.05 mm, color: light gray (similar RAL 7035)

# BC 107,6 DEV-KIT KMGY - Housing set

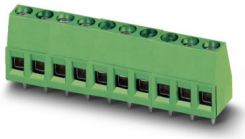
2202525

<https://www.phoenixcontact.com/pc/products/2202525>

## MKDS 1,5/ 3 - PCB terminal block

1715035

<https://www.phoenixcontact.com/pc/products/1715035>



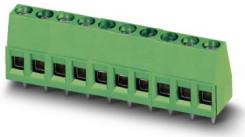
PCB terminal block, nominal current: 17.5 A, rated voltage (III/2): 400 V, nominal cross section: 1.5 mm<sup>2</sup>, number of potentials: 3, number of rows: 1, number of positions per row: 3, product range: MKDS 1,5, pitch: 5 mm, connection method: Screw connection with tension sleeve, screw head form: L Slotted, mounting: Wave soldering, conductor/PCB connection direction: 0 °, color: green, Pin layout: Linear pinning, Solder pin [P]: 3.5 mm, number of solder pins per potential: 1, type of packaging: packed in cardboard. The article can be aligned to create different nos. of positions!

---

## MKDS 1,5/ 4 - PCB terminal block

1715048

<https://www.phoenixcontact.com/pc/products/1715048>



PCB terminal block, nominal current: 17.5 A, rated voltage (III/2): 400 V, nominal cross section: 1.5 mm<sup>2</sup>, number of potentials: 4, number of rows: 1, number of positions per row: 4, product range: MKDS 1,5, pitch: 5 mm, connection method: Screw connection with tension sleeve, screw head form: L Slotted, mounting: Wave soldering, conductor/PCB connection direction: 0 °, color: green, Pin layout: Linear pinning, Solder pin [P]: 3.5 mm, number of solder pins per potential: 1, type of packaging: packed in cardboard. The article can be aligned to create different nos. of positions!

# BC 107,6 DEV-KIT KMGY - Housing set



2202525

<https://www.phoenixcontact.com/pc/products/2202525>

## Technical data

### Product properties

Product type	Stackable housing set
Housing type	DIN rail housing for use in distribution boards in accordance with DIN 43880
Housing series	BC
Product family	BC 107,6..
Ventilation openings present	yes

### Data management status

Article revision	03
------------------	----

### Dimensions

Width	107.6 mm
Length	89.7 mm

### Material specifications

Color (Lower housing part)	black (RAL 9005)
Color (Upper housing part)	light gray (RAL 7035)
Flammability rating according to UL 94	V0
Housing material	Polycarbonate
Surface characteristics	untreated

### Environmental and real-life conditions

#### Ambient conditions

Max. IP code to attain	IP20
Ambient temperature (operation)	-40 °C ... 105 °C (depending on power dissipation)

### PCB data

Type of PCB mount	Latching
-------------------	----------

### Mounting

Mounting type	Snap in
---------------	---------

# BC 107,6 DEV-KIT KMGY - Housing set



2202525

<https://www.phoenixcontact.com/pc/products/2202525>

## Classifications

### ECLASS

ECLASS-11.0	27182702
ECLASS-13.0	27190301

### ETIM

ETIM 9.0	EC001031
----------	----------

### UNSPSC

UNSPSC 21.0	31261500
-------------	----------

# BC 107,6 DEV-KIT KMGY - Housing set



2202525

<https://www.phoenixcontact.com/pc/products/2202525>

## Environmental product compliance

### EU RoHS

Fulfills EU RoHS substance requirements	Yes, No exemptions
---	--------------------

### China RoHS

Environment friendly use period (EFUP)	EFUP-E
	No hazardous substances above the limits

### EU REACH SVHC

REACH candidate substance (CAS No.)	No substance above 0.1 wt%
-------------------------------------	----------------------------

Phoenix Contact 2024 © - all rights reserved  
<https://www.phoenixcontact.com>

PHOENIX CONTACT GmbH & Co. KG  
Flachmarktstraße 8  
D-32825 Blomberg  
+49 (0) 5235-3 00  
[info@phoenixcontact.com](mailto:info@phoenixcontact.com)