

# Raytech RAY RTV

**Fast cross linking bicomponent silicone rubber  
with high mechanical, thermal and elastic characteristics**



**INSULATING AND SEALING**

**NON-STICK**

**HIGHLY RESISTANT**

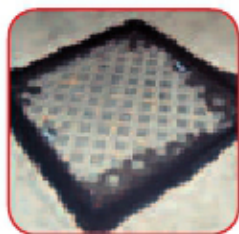
Ray-RTV is the new range of bicomponent silicone developed by Raytech's laboratories. Non-toxic, safe and with no shelf life, Ray-RTV cross links quickly at room temperature, transforming into a rubber with high mechanical, thermal and elastic characteristics.

Available in single dose bags, bottles, tanks and boxes, in standard 30 Shore A hardness for black and 15 Shore A for pink. Fast cross linking (less than 8 minutes at 30°C) and easily re-enterable.

## Applications Examples



Glass sealing



Pit sealing



Rubber mats



Elastic gaskets



Profile reliefs



Extruded profiles



Rubber gaskets



Anti-corrosion protection



Moulds for making models and for industry

Product code	Weight	Shore A Hardness	Colour	Package type
Bag-RTV 200-N	200 g	30	●	Single dose bag
Bag-RTV 350-N	350 g	30	●	
Bag-RTV 200-R	200 g	15	●	
Bag-RTV 350-R	350 g	15	●	
Ray-RTV 1000-N	1000 g	30	●	Cans
Ray-RTV 1000-R	1000 g	15	●	
Ray-RTV 10K-N	10 kg	30	●	Boxes
Ray-RTV 20K-N	20 kg	30	●	
Ray-RTV 400K-N	400 kg	30	●	
Ray-RTV 10K-R	10 kg	15	●	
Ray-RTV 20K-R	20 kg	15	●	
Ray-RTV 400K-R	400 kg	15	●	

Other colours, hardness and cross linking times (pot life) are available upon request for tanks of 400 Kg. Ray-RTV is available in bags up to 600 g.

## Characteristics

- Non-toxic and safe
- Re-enterable even after long periods of operation
- Density: about 1.24 gr/cm<sup>3</sup> (black) - 1.05 gr/cm<sup>3</sup> (pink)
- Cross linking: (pot life) at + 30°C: < 8 minutes
- Viscosity: 4000-6000 max MPas
- Elongation at break: 350 %
- Tensile strength: 2.8 Mpa
- Operating temperature: -60° / +200°
- Overload temperature: +250°
- Thermal conductivity: 0.2 W/m\*K
- Dielectric strength: >21 kV/mm
- Volume resistivity: >1.5 x 10 exp15 Ω cm
- No shelf life

## Installation sequence

