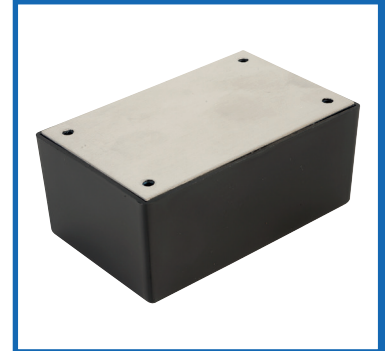


## General Purpose ABS Enclosures



### DESCRIPTION

An ABS box with aluminium lid and pre-drilled 2.54mm pitch matrix board with copper pads.

### DISTINCTIVE FEATURES

- Robust ABS enclosure with an Aluminium Lid
- Includes a precut 76.5x46.5mm 2.54mm pitch matrix board
- Matrix board requires no cutting to fit
- Supplied complete with self-adhesive feet and 6 fixing screws
- Fixing screws have a combi head that accepts flat blade or Phillips screwdrivers

### APPLICATIONS

Ideal for projects and prototype applications.

ABS

Al Lid

RAL  
1500

PCB  
Incl

Combi  
head





## GENERAL SPECIFICATION

Series	ABS enclosures
Type	General purpose enclosure
External Features	Aluminium lid
Internal Features	Matrix board
Screw size	M3 x 6mm Combi head
RoHS Compliant	Yes



## MATERIALS

Material enclosure (Base)	ABS (UL94-HB)
Material lid (Cover)	Aluminium
Finish	Smooth
Enclosure colour	Black
RAL colour code	1500 (Enclosure)
Lid colour	Natural
Screws	Steel, Zinc plated
Inserts	None
Feet	SBR (synthetic rubber)



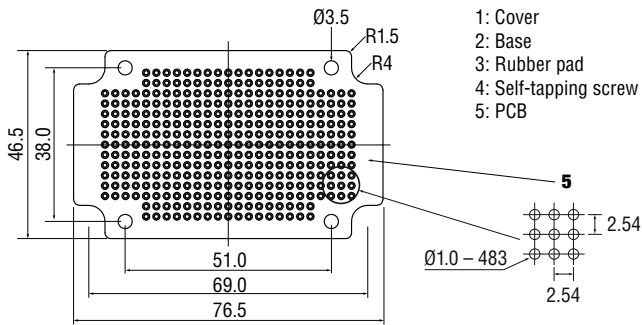
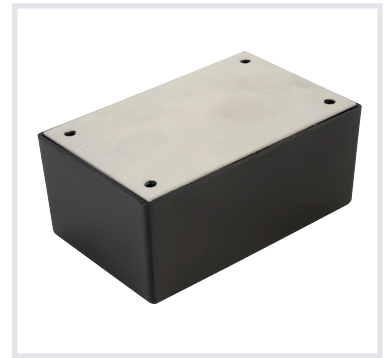
## ENVIRONMENTAL/OPERATING SPECIFICATION

Flame Resistance	UL94-HB
------------------	---------

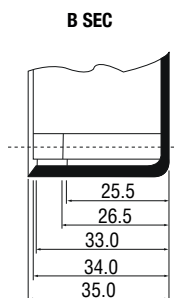
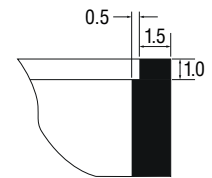
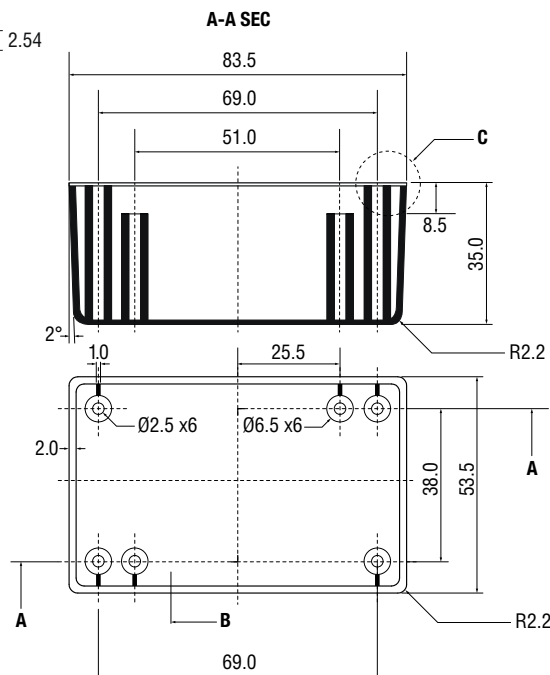
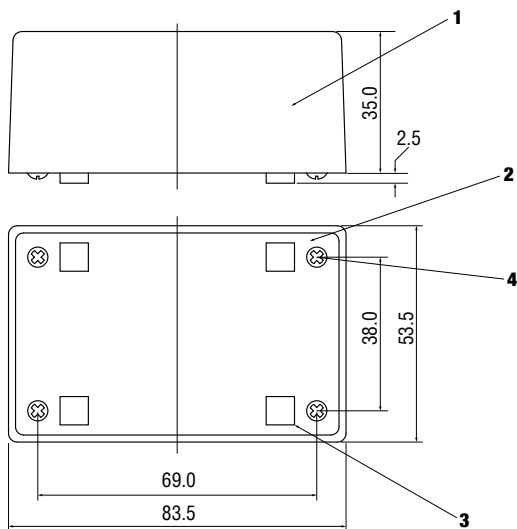


## DIMENSIONS/DRAWINGS

Units	mm - unless stated otherwise
Dimensions	53 x 83 x 35mm
Weight (grams)	56.6



- 1: Cover
- 2: Base
- 3: Rubber pad
- 4: Self-tapping screw
- 5: PCB



## PART NUMBER TABLE

Part Number	UNSPSC	EAN	Country Of Origin
30-1935	39121324	5053556002962	China

# R-TECH

Tried & trusted technology

**Important Notice:** This data sheet and its contents (the "Information") belong to Rapid Electronics Limited or are licensed to it. No licence is granted for the use of it other than for information purposes in connection with the products to which it relates. No licence of any intellectual property rights is granted. The Information is subject to change without notice and replaces all data sheets previously supplied. The Information supplied is believed to be accurate but Rapid Electronics Limited assumes no responsibility for its accuracy or completeness, any error in or omission from it or for any use made of it. Users of this data sheet should check for themselves the Information and the suitability of the products for their purpose and not make any assumptions based on information included or omitted. Liability for loss or damage resulting from any reliance on the Information or use of it (including liability resulting from negligence or where Rapid Electronics Limited were aware of the possibility of such loss or damage arising) is excluded. This will not operate to limit or restrict Rapid Electronics Limited's liability for death or personal injury resulting from its negligence.