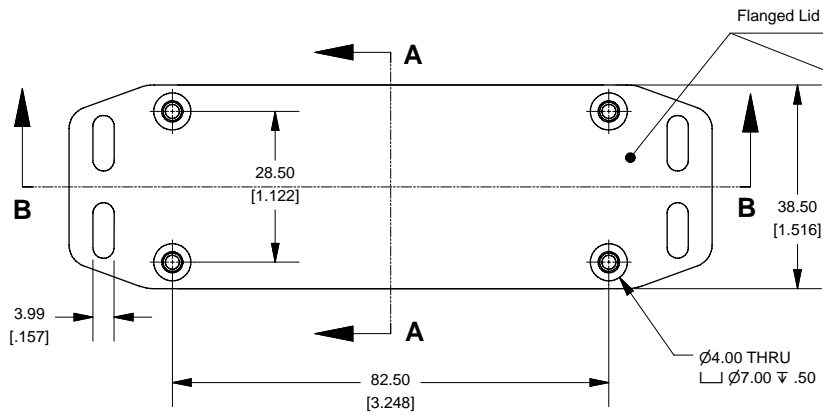


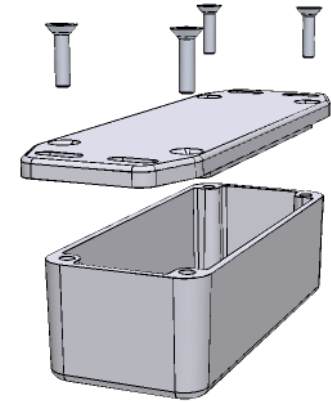
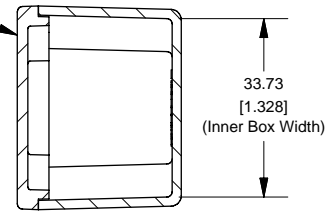
Order code	Manufacturer code	Description
30-3795	n/a	n/a

	Page 1 of 2
The enclosed information is believed to be correct, Information may change without notice due to product improvement. Users should ensure that the product is suitable for their use. E. & O. E.	Revision A 20/02/2007

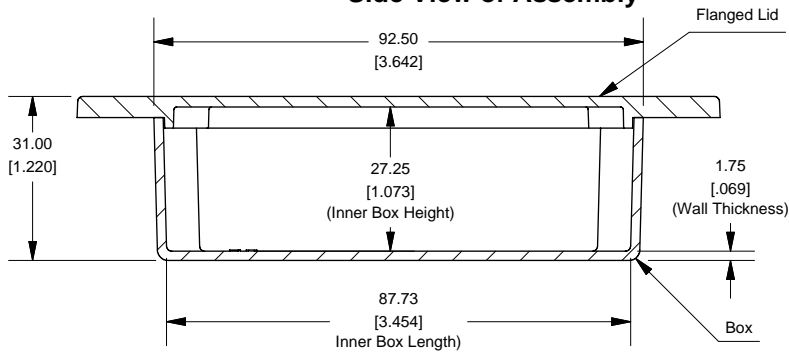
Top View of Assembly



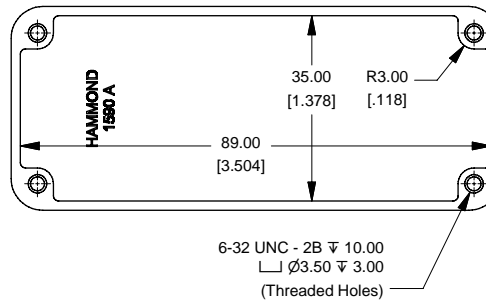
SECTION A-A End View of Assembly



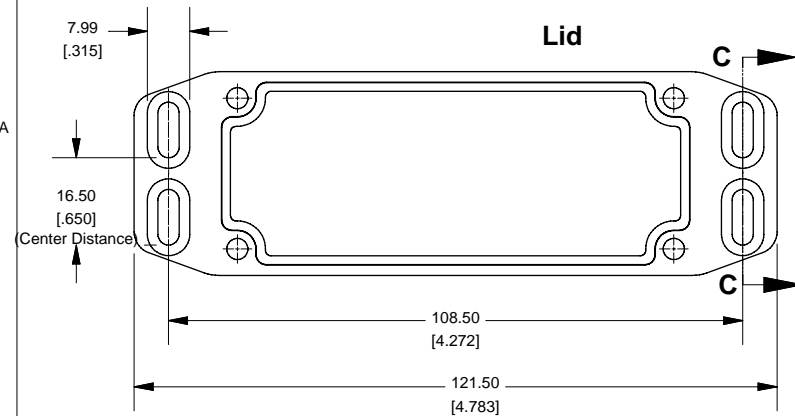
SECTION B-B Side View of Assembly



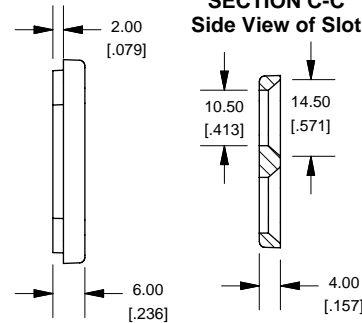
Top View Looking Inside Box



Enclosures can be Factory Modified (Milling, Drilling, Printing etc.)
Contact Factory mjm@hammondmgf.com for quotes
Solid models of this enclosure available in STEP or IGES.



SECTION C-C Side View of Slot



NOTE	
Purchased assembly includes box, lid and 4 cover screws. Box and lid are made from Diecast Aluminum Alloy (alloy type 380). Silicone Gasket Loctite #5950	
PART NUMBERS	
1590AFL Enclosure	
Unfinished	1590AFL
Grey Textured Polyester Powder Paint - RAL 7038	1590AFLGY
Black Textured Polyester Powder Paint - RAL 9011	1590AFLBK
1590AFL Liquid Resistant Enclosure (Silicon Factory Installed Gasket)	
Unfinished	1590WAF
Black Textured Powder Paint	1590WAFBK
ACCESSORIES	
Recommended Torque: 75 ozf.in / 55 cN.m	
Black Textured Cover Screws (Pkg 50)	1590WMS100BK
[6-32 x 1/2" SS Type 304]	
Unfinished Cover Screws (Pkg 100)	1590WMS100
[6-32 x 1/2" Nickel Plated Screws]	
Standard Cover Screws	
Unfinished Cover Screws (Pkg 100)	1590MS100
[6-32 x 1/2" Nickel Plated Screws]	
Black Textured Cover Screws (Pkg 50)	1590MS100BK
[6-32 x 1/2" SS Type 304]	