



Quality Products. Service Excellence.

Extruded Aluminum Enclosures 1455 Series

Anodize Finish, Sliding Belly Plates, Plastic or Metal End Plates

NEW SIZES



Key Features:

- Designed to house PC boards or for equipment interfacing.
- PC boards mount horizontally by sliding into internal slots extruded into the enclosure body.
- Rugged body constructed from extruded aluminum with a minimum thickness of 0.06" (1.5 mm).
- Many sizes include a removable sliding plate.

Includes:

- Versions with metal end plates include two flat aluminum end panels, color matched to housing, and two open plastic bezels, black.
- Versions with plastic end plates include two closed end panels, black.
- Extruded aluminum body, with or without sliding plate (see tables below).
- Four adhesive rubber feet. Order **1421T2CL** (pack of 24) for replacements.
- #6 x 3/8" thread rolling, steel end panel screws with a #4 flat head phillips drive. Clear anodized versions include natural screws, and black, red, and blue anodized versions include black screws.
- For black replacement screws (quantity 100) order part number **1455MS100BK**.
- For natural replacement screws for clear anodized enclosures (quantity 100) order part number **1455MS100**.
- NOTE: Recommended screw torque is 5 lbf-in.

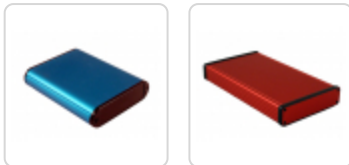
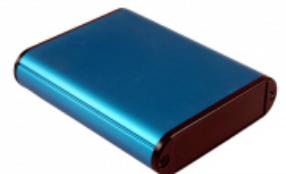
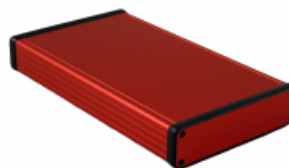
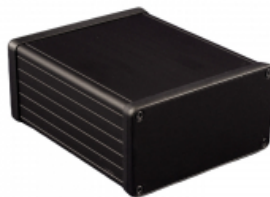


Photo Features:

Black Anodized Enclosure

Red Anodized Enclosure

Blue Anodized Enclosure



Many models feature a slide-

Accessory panels and bezels

All models sold as a complete enclosure and feature card

out plate. All models include rubber feet.

allow for mixing and matching of colors.

slots for easy installation and assembly of PC boards.

Accessories:

Plastic Bezels and End Caps

Extra plastic bezels and end caps are sold in packs of (2) and (10) and are available in black, red, yellow, transparent red, and transparent blue.

Refer to the accessory table below to select the part number you need.



Aluminum End Panels

Extra end panels are sold in 10-packs and are available in clear, black, red, or blue anodized finishes. Refer to the accessory table below to select the part number you need.



Flanged End Panel Kit

Flanged end panel kits are sold as a pair (2 panels total) and include black pan head assembly screws. Refer to the accessory table below to select the part number you need.



Enclosures With Sliding Plate

Enclosures w/ Aluminum End Panels	Enclosures w/ Plastic End Panels	Anodize Color	Length (mm)	Width (mm)	Depth (mm)
1455L801	1455L802	Clear	80.00	103.00	30.50
1455L801BK	1455L802BK	Black	80.00	103.00	30.50
1455L801BU		Blue	80.00	103.00	30.50
1455L801RD		Red	80.00	103.00	30.50
1455J1201	1455J1202	Clear	120.00	78.00	27.00
1455J1201BK	1455J1202BK	Black	120.00	78.00	27.00
1455J1201BU		Blue	120.00	78.00	27.00
1455J1201RD		Red	120.00	78.00	27.00
1455K1201	1455K1202	Clear	120.00	78.00	43.00
1455K1201BK	1455K1202BK	Black	120.00	78.00	43.00

Enclosures w/ Aluminum End Panels	Enclosures w/ Plastic End Panels	Anodize Color	Length (mm)	Width (mm)	Depth (mm)
1455K1201BU		Blue	120.00	78.00	43.00
1455K1201RD		Red	120.00	78.00	43.00
1455L1201	1455L1202	Clear	120.00	103.00	30.50
1455L1201BK	1455L1202BK	Black	120.00	103.00	30.50
1455L1201BU		Blue	120.00	103.00	30.50
1455L1201RD		Red	120.00	103.00	30.50
1455N1201	1455N1202	Clear	120.00	103.00	53.00
1455N1201BK	1455N1202BK	Black	120.00	103.00	53.00
1455N1201BU		Blue	120.00	103.00	53.00
1455N1201RD		Red	120.00	103.00	53.00
1455T1201	1455T1202	Clear	120.00	165.00	51.50
1455T1201BK	1455T1202BK	Black	120.00	165.00	51.50
1455J1601	1455J1602	Clear	160.00	78.00	27.00
1455J1601BK	1455J1602BK	Black	160.00	78.00	27.00
1455J1601BU		Blue	160.00	78.00	27.00
1455J1601RD		Red	160.00	78.00	27.00
1455K1601	1455K1602	Clear	160.00	78.00	43.00
1455K1601BK	1455K1602BK	Black	160.00	78.00	43.00
1455K1601BU		Blue	160.00	78.00	43.00
1455K1601RD		Red	160.00	78.00	43.00
1455L1601	1455L1602	Clear	160.00	103.00	30.50
1455L1601BK	1455L1602BK	Black	160.00	103.00	30.50
1455L1601BU		Blue	160.00	103.00	30.50
1455L1601RD		Red	160.00	103.00	30.50
1455N1601	1455N1602	Clear	160.00	103.00	53.00
1455N1601BK	1455N1602BK	Black	160.00	103.00	53.00
1455N1601BU		Blue	160.00	103.00	53.00
1455N1601RD		Red	160.00	103.00	53.00
1455P1601	1455P1602	Clear	160.00	125.00	30.51
1455P1601BK	1455P1602BK	Black	160.00	125.00	30.50
1455P1601BU		Blue	160.00	125.00	30.50
1455P1601RD		Red	160.00	125.00	30.50
1455Q1601	1455Q1602	Clear	160.00	125.00	51.50
1455Q1601BK	1455Q1602BK	Black	160.00	125.00	51.50
1455Q1601BU		Blue	160.00	125.00	51.50
1455Q1601RD		Red	160.00	125.00	51.50
1455R1601	1455R1602	Clear	160.00	165.00	30.50
1455R1601BK	1455R1602BK	Black	160.00	165.00	30.50
1455R1601BU		Blue	160.00	165.00	30.50
1455R1601RD		Red	160.00	165.00	30.50
1455T1601	1455T1602	Clear	160.00	165.00	51.50
1455T1601BK	1455T1602BK	Black	160.00	165.00	51.50
1455T1601BU		Blue	160.00	165.00	51.50
1455T1601RD		Red	160.00	165.00	51.50
1455U1601	1455U1602	Clear	160.00	191.00	66.00
1455U1601BK	1455U1602BK	Black	160.00	191.00	66.00
1455L2201	1455L2202	Clear	220.00	103.00	30.50
1455L2201BK	1455L2202BK	Black	220.00	103.00	30.50
1455L2201BU		Blue	220.00	103.00	30.50
1455L2201RD		Red	220.00	103.00	30.50
1455N2201	1455N2202	Clear	220.00	103.00	53.00
1455N2201BK	1455N2202BK	Black	220.00	103.00	53.00
1455N2201BU		Blue	220.00	103.00	53.00
1455N2201RD		Red	220.00	103.00	53.00

Enclosures w/ Aluminum End Panels	Enclosures w/ Plastic End Panels	Anodize Color	Length (mm)	Width (mm)	Depth (mm)
1455P2201	1455P2202	Clear	220.00	125.00	30.50
1455P2201BK	1455P2202BK	Black	220.00	125.00	30.50
1455P2201BU		Blue	220.00	125.00	30.50
1455P2201RD		Red	220.00	125.00	30.50
1455Q2201	1455Q2202	Clear	220.00	125.00	51.50
1455Q2201BK	1455Q2202BK	Black	220.00	125.00	51.50
1455Q2201BU		Blue	220.00	125.00	51.50
1455Q2201RD		Red	220.00	125.00	51.50
1455R2201	1455R2202	Clear	220.00	165.00	30.50
1455R2201BK	1455R2202BK	Black	220.00	165.00	30.50
1455R2201BU		Blue	220.00	165.00	30.50
1455R2201RD		Red	220.00	165.00	30.50
1455T2201	1455T2202	Clear	220.00	165.00	51.50
1455T2201BK	1455T2202BK	Black	220.00	165.00	51.50
1455T2201BU		Blue	220.00	165.00	51.50
1455T2201RD		Red	220.00	165.00	51.50
1455U2201	1455U2202	Clear	220.00	191.00	66.00
1455U2201BK	1455U2202BK	Black	220.00	191.00	66.00
1455U2801	1455U2802	Clear	280.00	191.00	66.00
1455U2801BK	1455U2802BK	Black	280.00	191.00	66.00

Enclosures Without Sliding Plate

Enclosures w/ Aluminum End Panels	Enclosures w/ Plastic End Panels	Anodize Color	Length (mm)	Width (mm)	Depth (mm)
1455D601	1455D602	Clear	60.00	45.00	23.00
1455D601BK	1455D602BK	Black	60.00	45.00	23.00
1455D601BU		Blue	60.00	45.00	23.00
1455D601RD		Red	60.00	45.00	23.00
1455D801	1455D802	Clear	80.00	45.00	23.00
1455D801BK	1455D802BK	Black	80.00	45.00	23.00
1455D801BU		Blue	80.00	45.00	23.00
1455D801RD		Red	80.00	45.00	23.00
	1455A802	Clear	80.00	70.00	12.00
	1455A802BK	Black	80.00	70.00	12.00
	1455A802BU	Blue	80.00	70.00	12.00
	1455A802RD	Red	80.00	70.00	12.00
	1455B802	Clear	80.00	71.70	19.00
	1455B802BK	Black	80.00	71.70	19.00
	1455B802BU	Blue	80.00	71.70	19.00
	1455B802RD	Red	80.00	71.70	19.00
1455C801	1455C802	Clear	80.00	54.00	23.00
1455C801BK	1455C802BK	Black	80.00	54.00	23.00
1455C801BU	1455C802BU	Blue	80.00	54.00	23.00
1455C801RD	1455C802RD	Red	80.00	54.00	23.00
1455CS801	1455CS802	Clear	80.00	54.00	54.00
1455CS801BK	1455CS802BK	Black	80.00	54.00	54.00
	1455A1002	Clear	100.00	70.00	12.00
	1455A1002BK	Black	100.00	70.00	12.00
	1455A1002BU	Blue	100.00	70.00	12.00
	1455A1002RD	Red	100.00	70.00	12.00
	1455B1002	Clear	100.00	71.70	19.00
	1455B1002BK	Black	100.00	71.70	19.00
	1455B1002BU	Blue	100.00	71.70	19.00
	1455B1002RD	Red	100.00	71.70	19.00

Enclosures w/ Aluminum End Panels	Enclosures w/ Plastic End Panels	Anodize Color	Length (mm)	Width (mm)	Depth (mm)
	1455A1202	Clear	120.00	70.00	12.00
	1455A1202BK	Black	120.00	70.00	12.00
	1455A1202BU	Blue	120.00	70.00	12.00
	1455A1202RD	Red	120.00	70.00	12.00
	1455B1202	Clear	120.00	71.70	19.00
	1455B1202BK	Black	120.00	71.70	19.00
	1455B1202BU	Blue	120.00	71.70	19.00
	1455B1202RD	Red	120.00	71.70	19.00
1455C1201	1455C1202	Clear	120.00	54.00	23.00
1455C1201BK	1455C1202BK	Black	120.00	54.00	23.00
1455C1201BU		Blue	120.00	54.00	23.00
1455C1201RD		Red	120.00	54.00	23.00
1455CS1201	1455CS1202	Clear	120.00	54.00	54.00
1455CS1201BK	1455CS1202BK	Black	120.00	54.00	54.00
1455NS1201	1455NS1202	Clear	120.00	104.50	104.50
1455NS1201BK	1455NS1202BK	Black	120.00	104.50	104.50
1455NS1601	1455NS1602	Clear	160.00	104.50	104.50
1455NS1601BK	1455NS1602BK	Black	160.00	104.50	104.50
1455NS2201	1455NS2202	Clear	220.00	104.50	104.50
1455NS2201BK	1455NS2202BK	Black	220.00	104.50	104.50

Closed Bezels (Plastic End Caps)

Part No.	Starting		Black		Yellow		Red		Translucent Red		Translucent Blue	
	With:	2-pack	10-pack	2-pack	10-pack	2-pack	10-pack	2-pack	10-pack	2-pack	10-pack	
1455A		1455APLBK	1455APLBK-10									
1455B		1455BPLBK	1455BPLBK-10									
1455C		1455CPLBK	1455CPLBK-10	1455CPLY	1455CPLY-10	1455CPLRED	1455CPLRED-10	1455CPLTRD	1455CPLTRD-10	1455CPLTBU	1455CPLTBU-10	
1455CS		1455CSPLBK	1455CSPLBK-10									
1455D		1455DPLBK	1455DPLBK-10							1455DPLTBU	1455DPLTBU-10	
1455J		1455JPLBK	1455JPLBK-10	1455JPLY	1455JPLY-10	1455JPLRED	1455JPLRED-10	1455JPLTRD	1455JPLTRD-10	1455JPLTBU	1455JPLTBU-10	
1455K		1455KPLBK	1455KPLBK-10	1455KPLY	1455KPLY-10	1455KPLRED	1455KPLRED-10	1455KPLTRD	1455KPLTRD-10	1455KPLTBU	1455KPLTBU-10	
1455L		1455LPLBK	1455LPLBK-10	1455LPLY	1455LPLY-10	1455LPLRED	1455LPLRED-10	1455LPLTRD	1455LPLTRD-10	1455LPLTBU	1455LPLTBU-10	
1455N		1455NPLBK	1455NPLBK-10	1455NPLY	1455NPLY-10	1455NPLRED	1455NPLRED-10	1455NPLTRD	1455NPLTRD-10	1455NPLTBU	1455NPLTBU-10	
1455NS		1455NSPLBK	1455NSPLBK-10									
1455P		1455PPLBK	1455PPLBK-10	1455PPLY	1455PPLY-10	1455PPLRED	1455PPLRED-10	1455PPLTRD	1455PPLTRD-10	1455PPLTBU	1455PPLTBU-10	
1455Q		1455QPLBK	1455QPLBK-10	1455QPLY	1455QPLY-10	1455QPLRED	1455QPLRED-10	1455QPLTRD	1455QPLTRD-10	1455QPLTBU	1455QPLTBU-10	
1455R		1455RPLBK	1455RPLBK-10	1455RPLY	1455RPLY-10	1455RPLRED	1455RPLRED-10	1455RPLTRD	1455RPLTRD-10	1455RPLTBU	1455RPLTBU-10	
1455T		1455TPLBK	1455TPLBK-10	1455TPLY	1455TPLY-10	1455TPLRED	1455TPLRED-10	1455TPLTRD	1455TPLTRD-10	1455TPLTBU	1455TPLTBU-10	
1455U		1455UPLBK	1455UPLBK-10	1455UPLY	1455UPLY-10	1455UPLRED	1455UPLRED-10	1455UPLTRD	1455UPLTRD-10	1455UPLTBU	1455UPLTBU-10	

Open Bezels (For Use w/ Metal End Plate Enclosures)

Part No.	Black		Yellow		Red		Translucent Red		Translucent Blue			
	Starting With:	2-pack	10-pack	2-pack	10-pack	2-pack	10-pack	2-pack	10-pack	2-pack	10-pack	
1455C	1455CBBK	1455CBBK-10	1455CBBK	1455CBBK-10	1455CBBK	1455CBBK-10	1455CBBK	1455CBBK-10	1455CBBK	1455CBBK-10	1455CBBK	1455CBBK-10
1455CS	1455CSBBK	1455CSBBK-10										
1455D	1455DBBK	1455DBBK-10								1455DBTBU	1455DBTBU-10	
1455J	1455JBBK	1455JBBK-10	1455JBY	1455JBY-10	1455JBRED	1455JBRED-10	1455JBTRD	1455JBTRD-10	1455JBTRD	1455JBTRD-10	1455JBTBU	1455JBTBU-10
1455K	1455KBBK	1455KBBK-10	1455KBY	1455KBY-10	1455KBRED	1455KBRED-10	1455KBTRD	1455KBTRD-10	1455KBTRD	1455KBTRD-10	1455KBTBU	1455KBTBU-10
1455L	1455LBBK	1455LBBK-10	1455LBY	1455LBY-10	1455LBRED	1455LBRED-10	1455LBTRD	1455LBTRD-10	1455LBTRD	1455LBTRD-10	1455LBTBU	1455LBTBU-10
1455N	1455NBBK	1455NBBK-10	1455NBY	1455NBY-10	1455NBRED	1455NBRED-10	1455NBTRD	1455NBTRD-10	1455NBTRD	1455NBTRD-10	1455NBTBU	1455NBTBU-10
1455NS	1455NSBBK	1455NSBBK-10										
1455P	1455PBBK	1455PBBK-10	1455PBY	1455PBY-10	1455PBRED	1455PBRED-10	1455PBTRD	1455PBTRD-10	1455PBTRD	1455PBTRD-10	1455PBTBU	1455PBTBU-10
1455Q	1455QBBK	1455QBBK-10	1455QBY	1455QBY-10	1455QBRED	1455QBRED-10	1455QBTRD	1455QBTRD-10	1455QBTRD	1455QBTRD-10	1455QBTBU	1455QBTBU-10
1455R	1455RBBK	1455RBBK-10	1455RBY	1455RBY-10	1455RBRED	1455RBRED-10	1455RBTRD	1455RBTRD-10	1455RBTRD	1455RBTRD-10	1455RBTBU	1455RBTBU-10
1455T	1455TBBK	1455TBBK-10	1455TBY	1455TBY-10	1455TBRED	1455TBRED-10	1455TBTRD	1455TBTRD-10	1455TBTRD	1455TBTRD-10	1455TBTBU	1455TBTBU-10
1455U	1455UBBK	1455UBBK-10	1455UBY	1455UBY-10	1455UBRED	1455UBRED-10	1455UBTRD	1455UBTRD-10	1455UBTRD	1455UBTRD-10	1455UBTBU	1455UBTBU-10

Aluminum End Panels (For Use With Metal End Plate Enclosures)

For Part Number	Clear Anodize	Black Anodize	Blue Anodize	Red Anodize
Starting With	10-pack	10-pack	10-pack	10-pack
1455C	1455CAL-10	1455CALBK-10	1455CALBU-10	1455CALRD-10
1455CS	1455CSAL-10	1455CSALBK-10		
1455D	1455DAL-10	1455DALBK-10	1455DALBU-10	1455DALRD-10
1455J	1455JAL-10	1455JALBK-10	1455JALBU-10	1455JALRD-10
1455K	1455KAL-10	1455KALBK-10	1455KALBU-10	1455KALRD-10
1455L	1455LAL-10	1455LALBK-10	1455LALBU-10	1455LALRD-10
1455N	1455NAL-10	1455NALBK-10	1455NALBU-10	1455NALRD-10
1455NS	1455NSAL-10	1455NSALBK-10		
1455P	1455PAL-10	1455PALBK-10	1455PALBU-10	1455PALRD-10
1455Q	1455QAL-10	1455QALBK-10	1455QALBU-10	1455QALRD-10
1455R	1455RAL-10	1455RALBK-10	1455RALBU-10	1455RALRD-10
1455T	1455TAL-10	1455TALBK-10	1455TALBU-10	1455TALRD-10
1455U	1455UAL-10	1455UALBK-10		

Flanged End Panel Kits

For Part Number	Replacement Screws For Flange Kits		
	Clear Anodize	Black Anodize	(100-pack)
1455C	1455CF	1455CFBK	1455MSFL100BK
1455D	1455DF	1455DFBK	1455MSFL100BK
1455J	1455JF	1455JFBK	1455MSFL100BK
1455K	1455KF	1455KFBK	1455MSFL100BK
1455L	1455LF	1455LFBK	1455MSFL100BK
1455N	1455NF	1455NFBK	1455MSFL100BK
1455P	1455PF	1455PFBK	1455MSFL100BK
1455Q	1455QF	1455QFBK	1455MSFL100BK
1455R	1455RF	1455RFBK	1455MSFL100BK
1455T	1455TF	1455TFBK	1455MSFL100BK
1455U	1455UF	1455UFBK	1455MSFL100BK

Tags: extruded, PCB mount, PCB slot, board enclosure, anodized, extruded aluminum

Data subject to change without notice

Mouser Electronics

Authorized Distributor

Click to View Pricing, Inventory, Delivery & Lifecycle Information:

Hammond:

[1455L2202](#) [1455L2201](#) [1455L1202](#) [1455L1201](#) [1455R2201](#) [1455N2201](#) [1455N1601](#) [1455N1602](#) [1455T2201](#)
[1455Q2201](#) [1455Q2202](#) [1455T1601](#) [1455T1602](#) [1455Q1602](#) [1455Q1601](#) [1455T2202](#) [1455RFBK](#) [1455R2202BK](#)
[1455P2202BK](#) [1455T2202BK](#) [1455Q2202BK](#) [1455P2201BK](#) [1455R2201BK](#) [1455JFBK](#) [1455K1602](#) [1455K1601](#)
[1455L2201BK](#) [1455N2201BK](#) [1455C802BK](#) [1455L2202BK](#) [1455N2202BK](#) [1455C1202BK](#) [1455K1601BK](#)
[1455N1601BK](#) [1455J1601BK](#) [1455L1601BK](#) [1455L1201BK](#) [1455K1201BK](#) [1455N1201BK](#) [1455J1201BK](#)
[1455T2201BK](#) [1455J1601](#) [1455J1602](#) [1455C1201](#) [1455C1202](#) [1455C1201BK](#) [1455L1602](#) [1455L1601](#)
[1455K1202BK](#) [1455N1202BK](#) [1455J1202BK](#) [1455L1202BK](#) [1455NFBK](#) [1455KF](#) [1455KFBK](#) [1455N1201](#) [1455C802](#)
[1455N1202](#) [1455C801](#) [1455N1602BK](#) [1455L1602BK](#) [1455K1602BK](#) [1455J1602BK](#) [1455J1201](#) [1455J1202](#)
[1455C801BK](#) [1455NF](#) [1455LF](#) [1455R1601](#) [1455N2202](#) [1455K1202](#) [1455K1201](#) [1455NALBK-10](#) [1455QALBK-10](#)
[1455A802BK](#) [1455B802BK](#) [1455TAL-10](#) [1455JPLTRD](#) [1455QPLBK](#) [1455JBTBU-10](#) [1455NBBK](#) [1455PBTBU-10](#)
[1455Q1602BK](#) [1455R1602BK](#) [1455P1602BK](#) [1455T1602BK](#) [1455Q2201BK](#) [1455R2202](#) [1455Q1601BK](#)
[1455T1601BK](#) [1455P1601BK](#) [1455R1601BK](#) [1455LFBK](#) [1455P1601](#) [1455P1602](#) [1455P2201](#) [1455P2202](#)
[1455TFBK](#) [1455TF](#) [1455JF](#)