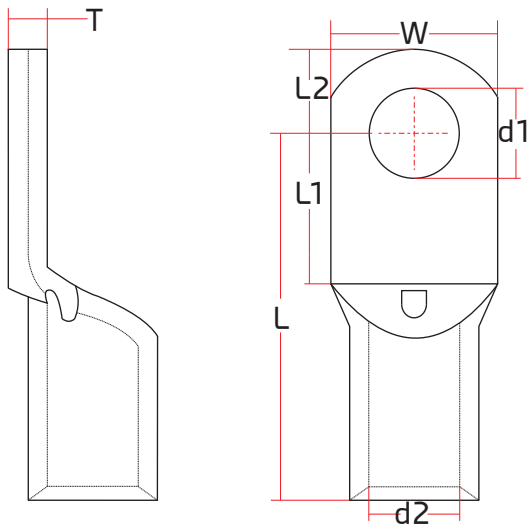


# Non-Insulated Tubular Cable Lug 50mm², 180° straight, M8 Stud size



## Technical Data:

Material: Copper  
 Plating: Tin  
 Max. voltage rating: 3kV  
 Max. temperature rating: 150°C

Wire Guide	Cross Section	Dimension (mm)						
		L	L1	L2	ød1	ød2	W	T
0 AWG	50 mm²	53.5 ±1.0	42.2 ±0.2	11.3 ±0.2	8.30 ±0.2	10.0 ±0.2	19.2 ±0.2	2.80 ±0.2