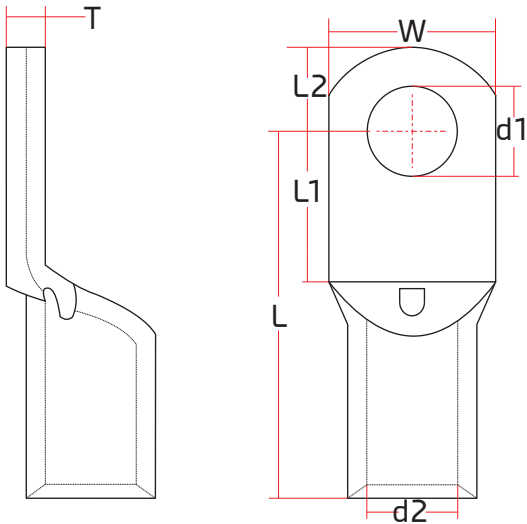
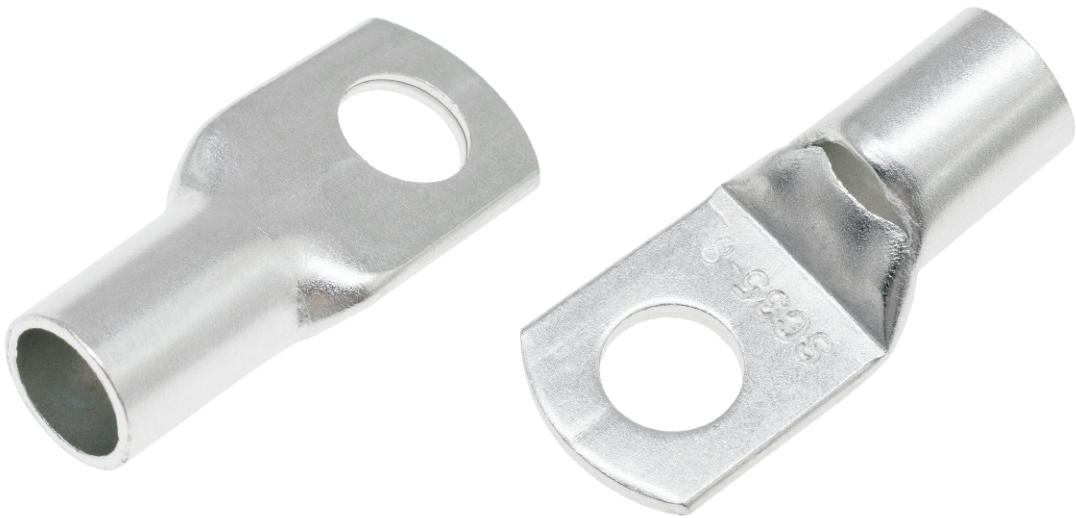


Non-Insulated Tubular Cable Lug 35mm², 180° straight, M8 Stud size



Technical Data:

Material: Copper
 Plating: Tin
 Max. voltage rating: 3kV
 Max. temperature rating: 150°C

Wire Guide	Cross Section	Dimension (mm)						
		L	L1	L2	ød1	ød2	W	T
2 AWG	35 mm²	35.8 ±1.0	10.5 ±0.2	7.80 ±0.2	8.30 ±0.2	8.30 ±0.2	15.5 ±0.2	1.80 ±0.2