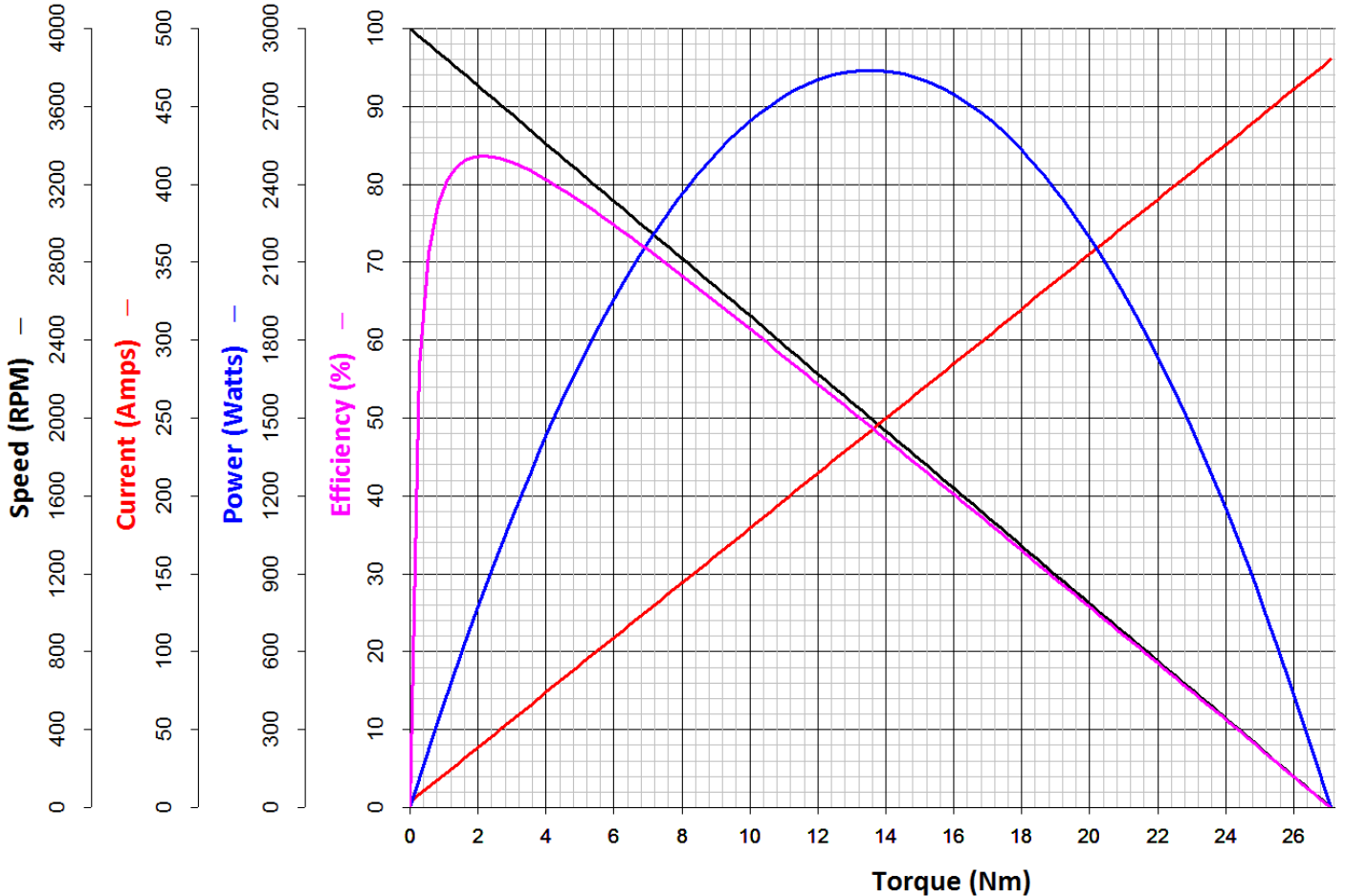


Ampflow A40-300

Specification:

Diameter	101mm (4 in.)
Length	176mm (6.9 in.)
Peak Power	2.8kW (3.8)
Stall Torque	27nm (3840 oz-in)
Efficiency	84%
Nominal Voltage	24V
RPM @ 24V	4000
Shaft Diameter	15.9mm (5/8 in.)
Shaft Length	44.45mm (1.75 in.)
Keyway	4.76 (3/16 in.)
Magnet Type	Ferrite
No Load Current	3.5
Resistance	0.050Ω
Weight	5.4kg (11.9lbs)

AmpFlow A40-300 24V



4

3

2

1

REVISIONS				
ECO	REV	DESCRIPTION	DATE	APPROVED

D

D

C

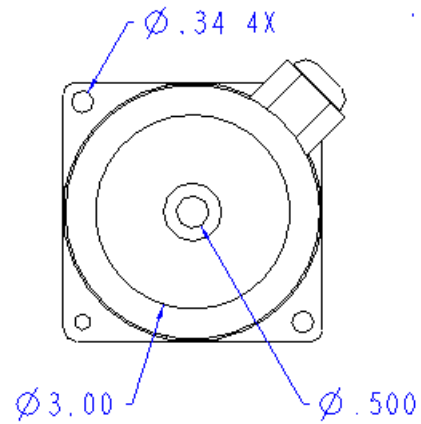
C

B

B

A

A



.85

6.83

1.70

Ø 3.000

Ø .625

4.00

3.400

.188

.15

.15

3.400

4.00

NOMINAL VOLTAGE: 24
 NO-LOAD RPM: 4000
 MOTOR WEIGHT: 11.9 LBS
 MAGNETS: FERRITE

ITEM	PART NUMBER	DESCRIPTION	QTY
BILL OF MATERIAL			

DO NOT SCALE THIS DRAWING		<table border="1"> <tr> <th colspan="2">TOLERANCES UNLESS OTHERWISE NOTED</th> <th colspan="2">SIGNATURE</th> <th>DATE</th> </tr> <tr> <td>2 DEC ±</td> <td>3 DEC ±</td> <td>ANGLE</td> <td>DETAIL</td> <td> </td> </tr> <tr> <td colspan="2">REMOVE BARRS & SHARP EDGES</td> <td colspan="2">APP'D</td> <td> </td> </tr> <tr> <td colspan="2">SERIAL TESTER</td> <td colspan="2">APP'D</td> <td> </td> </tr> </table>		TOLERANCES UNLESS OTHERWISE NOTED		SIGNATURE		DATE	2 DEC ±	3 DEC ±	ANGLE	DETAIL		REMOVE BARRS & SHARP EDGES		APP'D			SERIAL TESTER		APP'D			Powerhouse Engineering A40-300	
TOLERANCES UNLESS OTHERWISE NOTED		SIGNATURE		DATE																					
2 DEC ±	3 DEC ±	ANGLE	DETAIL																						
REMOVE BARRS & SHARP EDGES		APP'D																							
SERIAL TESTER		APP'D																							
MATERIAL		FINISH		DIMENSIONS ARE IN INCHES THIRD ANGLE PROJECTION																					
				SIZE C	DRAWING NUMBER																				
				SCALE	REV																				

SCALE X.XX ±0.1
 X.XX ±0.01

SHEET 1 OF 1

4

3

2