

950D SERIES 35mm SINGLE RATIO METAL GEARBOX

(RE 385 MOTOR)



RATIOS NOW AVAILABLE AS EX-STOCK ITEMS.

| | | |
|-----------|--------------|---------------------------------|
| 950D2.51 | (4.5v - 15v) | WITH RE 385 MOTOR. RATIO 2.5:1 |
| 950D61 | (4.5v - 15v) | WITH RE 385 MOTOR. RATIO 6:1 |
| 950D111 | (4.5v - 15v) | WITH RE 385 MOTOR. RATIO 11:1 |
| 950D501 | (4.5v - 15v) | WITH RE 385 MOTOR. RATIO 50:1 |
| 950D1001 | (4.5v - 15v) | WITH RE 385 MOTOR. RATIO 100:1 |
| 950D1481 | (4.5v - 15v) | WITH RE 385 MOTOR. RATIO 148:1 |
| 950D5001 | (4.5v - 15v) | WITH RE 385 MOTOR. RATIO 500:1 |
| 950D8101 | (4.5v - 15v) | WITH RE 385 MOTOR. RATIO 810:1 |
| 950D30001 | (4.5v - 15v) | WITH RE 385 MOTOR. RATIO 3000:1 |

IMPORTANT NOTICE
Due to the wide range of applications for this product it is the users responsibility to establish the products suitability for their individual purpose(s).

Designed for heavy-duty industrial and model applications this robust unit boasts a powerful high quality, five pole motor with sintered bronze bearings. The metal gearbox incorporates sleeved bearings, enabling the high torque transfer from the motor to be transmitted through the gearbox. The unit is mounted on a 1mm thick plated steel bracket.

MOTOR DATA. (RE-385)

| MODEL | VOLTAGE | | NO LOAD | | AT MAXIMUM EFFICIENCY | | | | | | STALL TORQUE | | |
|----------|-----------------|--------------|---------|---------|-----------------------|---------|---------|--------|--------|------|----------------|--------|-------|
| | OPERATING RANGE | NOMINAL | SPEED | CURRENT | SPEED | CURRENT | TORQUE | | OUTPUT | EFF | oz - in g - cm | | |
| | | | R.P.M. | A | R.P.M. | A | oz - in | g - cm | W | % | oz - in | g - cm | |
| RE - 385 | 6.0 - 15.0 | 12v CONSTANT | 11646 | 0.18 | 9869 | 0.99 | | | 78.4 | 7.98 | 66.1 | | 513.5 |

REDUCTION TABLE. R.P.M.

Stall Current RE385 at 12v = 4.62A

| SUPPLY VOLTAGE | 4.5v | 6.0v | 9.0v | 12.0v | 15.0v |
|----------------|------|------|------|-------|-------|
| 950D2.51 | 1890 | 2520 | 3375 | 5040 | 6300 |
| 950D61 | 787 | 1050 | 1575 | 2100 | 2625 |
| 950D111 | 429 | 572 | 858 | 1145 | 1430 |
| 950D501 | 94 | 126 | 189 | 252 | 315 |
| 950D1001 | 41 | 55 | 83 | 110 | 138 |
| 950D1481 | 32 | 42 | 64 | 85 | 106 |
| 950D5001 | 8 | 11 | 17 | 22 | 28 |
| 950D8101 | 5 | 7 | 11 | 15 | 18 |
| 950D30001 | 1.5 | 2 | 3 | 4 | 5 |

| WEIGHT | |
|-----------|------|
| 950D2.51 | 146g |
| 950D61 | 144g |
| 950D111 | 146g |
| 950D501 | 156g |
| 950D1481 | 162g |
| 950D8101 | 164g |
| 950D30001 | 168g |

| RATED TOLERANCE TORQUE (g.cm) | MAX MOMENTARY TOLERANCE TORQUE | |
|-------------------------------|--------------------------------|-------|
| 2.5:1 | 1000 | 6000 |
| 6:1 | 3000 | 9000 |
| 11:1 | 3000 | 9000 |
| 50:1 | 3000 | 9000 |
| 100:1 | 6000 | 18000 |
| 148:1 | 6000 | 18000 |
| 500:1 | 6000 | 18000 |
| 810:1 | 6000 | 18000 |
| 3000:1 | 6000 | 18000 |

Note: Motor speeds may vary by (+) or (-) 12.5%

GEARBOX RATINGS

IMPORTANT NOTICE
At very low ratios the torque produced by this geared motor combination may exceed the maximum permissible torque of the gearbox. In this situation the unit must not be allowed to stall as this may damage the gears. Please refer to the table of the gearbox ratings to ascertain the appropriate geared motor combination.

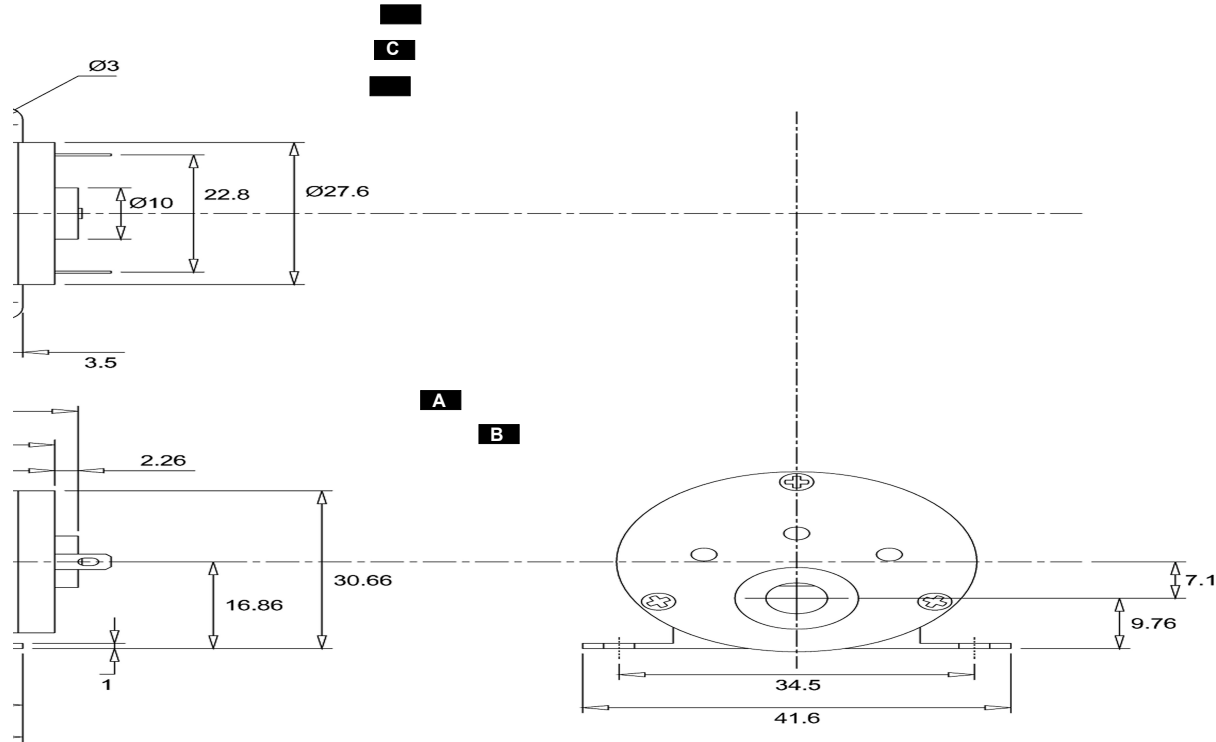
24 volt versions are available for this range of motor-gearboxes. Performance data is similar to 12 volt versions. This version also has an extended 10mm rear shaft to accommodate motor encoders. When ordering please use 12v version part number suffixed with 24V. I.E. 950D111 will be 950D11124V

NOTE: To establish Torque Rating in nM, divide g.cm by 10,197.0

950D SERIES 35mm SINGLE RATIO METAL GEARBOX

(RE 385 MOTOR)

GEARBOX DIMENSIONS



| GEARBOX REF. | A | B | C |
|-------------------|----|----|----|
| 950D2.5:1 | 86 | 61 | 20 |
| 950D6:1 (6:1) | 85 | 60 | 19 |
| 950D11:1 (11:1) | 85 | 60 | 19 |
| 950D50:1 (50:1) | 90 | 65 | 24 |
| 950D100:1 (100:1) | 90 | 65 | 24 |
| 950D148:1 (148:1) | 93 | 68 | 27 |
| 950D500:1 (500:1) | 95 | 70 | 29 |
| 950D810:1 (810:1) | 95 | 70 | 29 |
| 950D3000:1 | 98 | 73 | 32 |

FOR ACCESSORIES TO FIT THIS SERIES GEARBOX, REFER TO 919D SERIES PAGE.

Subject to minimum order quantities of 250 units, the following ratios are also available with a six week lead-time. The physical dimensions of these other gearboxes may vary from the data as illustrated above. Details of individual gearboxes are available upon request.

GEARBOX 18:1 WITH 385 MOTOR.
 GEARBOX 70:1 WITH 385 MOTOR.
 GEARBOX 100:1 WITH 385 MOTOR
 GEARBOX 200:1 WITH 385 MOTOR
 GEARBOX 350:1 WITH 385 MOTOR
 GEARBOX 500:1 WITH 385 MOTOR
 GEARBOX 900:1 WITH 385 MOTOR
 GEARBOX 3000:1 WITH 385 MOTOR

GEARBOX 30:1 WITH 385 MOTOR.
 GEARBOX 75:1 WITH 385 MOTOR.
 GEARBOX 120:1 WITH 385 MOTOR
 GEARBOX 250:1 WITH 385 MOTOR
 GEARBOX 400:1 WITH 385 MOTOR
 GEARBOX 600:1 WITH 385 MOTOR
 GEARBOX 1000:1 WITH 385 MOTOR

GEARBOX 60:1 WITH 385 MOTOR
 GEARBOX 90:1 WITH 385 MOTOR.
 GEARBOX 180:1 WITH 385 MOTOR
 GEARBOX 300:1 WITH 385 MOTOR
 GEARBOX 450:1 WITH 385 MOTOR
 GEARBOX 700:1 WITH 385 MOTOR
 GEARBOX 1500:1 WITH 385 MOTOR