

Thermionic valves

| Order code | Manufacturer code | Description |
|------------|-------------------|----------------------------------|
| 38-2006 | n/a | B9A CERAMIC PCB GOLD PLATED (RC) |

| | |
|--|--------------------------|
| Thermionic valves | Page 1 of 3 |
| The enclosed information is believed to be correct, Information may change without notice due to product improvement. Users should ensure that the product is suitable for their use. E. & O. E. | Revision A 20/02/2007 |

PRODUCT SPECIFICATION

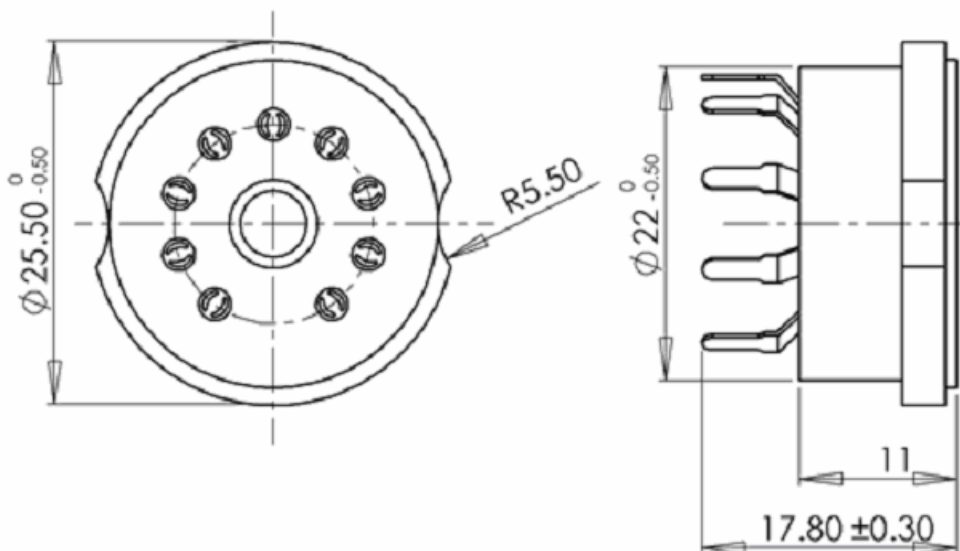
SK9CP22 Ceramic Socket

This socket is used for glass audio noval vacuum tubes like 12AX7, 12AU7, 12AT7, etc.

Main Characteristics

| Working Voltage | Contact Resistance | Insulation Resistance (under normal condition) | Testing Voltage | Total Breakaway Force | Life Time | Weight |
|-----------------|--------------------|--|-----------------|-----------------------|-----------|--------|
| 800V | $\leq 0.01 \Omega$ | $\geq 10,000M \Omega$ | 1600V | 2~7kgf | 200 times | 20 g |

Outside Dimension



**Physical Characteristics of the ceramic material used
for production of SK9CP22**

| Item | Unit | Technical Index |
|-------------------------------|--------------------------|-------------------|
| volume density | g/cm ³ | >2.7 |
| anti-folding intensity | kgf/cm ² | 1400 |
| linear expanding coefficient | × 10 ⁻⁶ mm/°C | <8 |
| dielectric coefficient | | <7.5 |
| dielectric dissipation factor | × 10 ⁻⁴ | <8 |
| volume resistivity | Ω • cm | >10 ¹² |
| breaking down intensity | kv • mm | 20 |

**Chemistry ingredient of the ceramic material used for
production of SK9CP22**

| chemistry ingredient | Weight percentage wt% |
|--------------------------------|-----------------------|
| SiO ₂ | 57.5~58.5 |
| Al ₂ O ₃ | 3.7~4.7 |
| Fe ₂ O ₃ | <0.15 |
| MgO | 27.5~29.5 |
| BaO | 7.5~8.5 |
| cauterant | <0.8 |
| R ₂ O | <0.3 |

**Material ingredient of the electric conducting lug
used for production of SK9CP22**

| testing item | chemistry ingredient % | | | | | |
|--------------|------------------------|----------|-------|-------|----|-----|
| | GB5233-1985 | | | | | |
| | Cu | P | Pb | Fe | Zn | Sn |
| 15579 | remains | 0.1~0.25 | ≤0.02 | ≤0.05 | / | 6~7 |