

## Thermionic valves

Order code	Manufacturer code	Description
38-2008	n/a	B9A CERAMIC PCB GOLD PLATED SML PITCH RC

Thermionic valves	Page 1 of 3
The enclosed information is believed to be correct, Information may change 'without notice' due to product improvement. Users should ensure that the product is suitable for their use. E. & O. E.	Revision A 04/07/2003

# PRODUCT SPECIFICATION

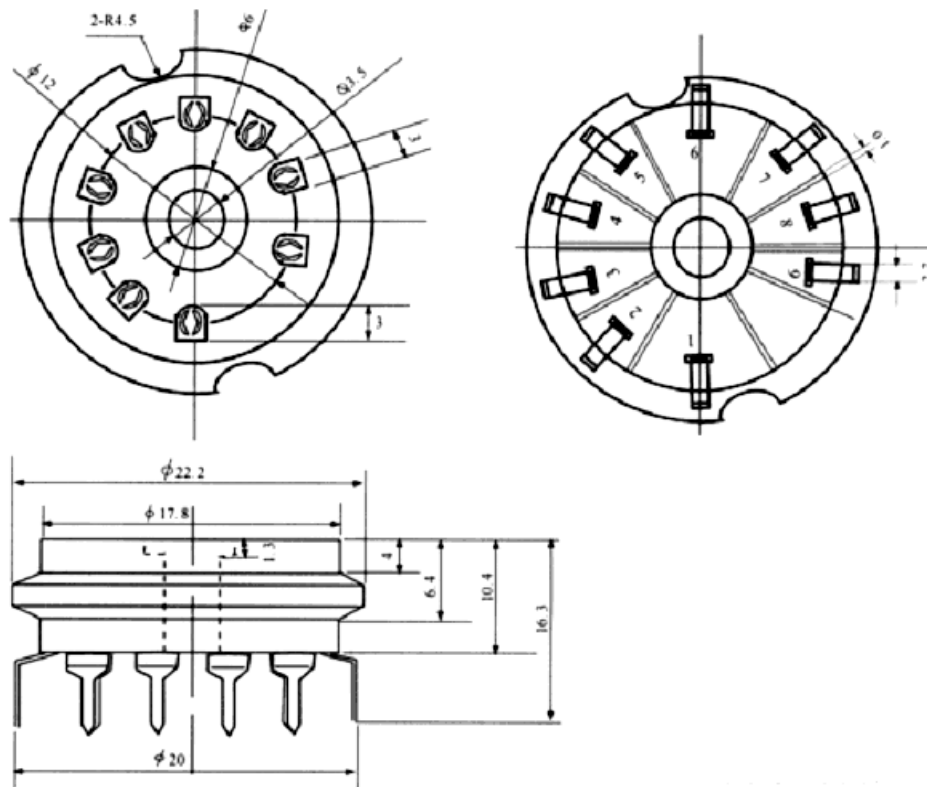
## SK9CP20 Ceramic Socket

This socket is used for glass audio noval vacuum tubes like 12AX7, 12AU7, 12AT7, etc.

### Main Characteristics

Working Voltage	Contact Resistance	Insulation Resistance (under normal condition)	Testing Voltage	Total Breakaway Force	Life Time	Weight
800V	$\leq 0.01 \Omega$	$\geq 10,000M \Omega$	1600V	2~7kgf	200 times	

### Outside Dimension



## Physical Characteristics of the ceramic material used for production of SK9CP20

Item	Unit	Technical Index
volume density	g/cm <sup>3</sup>	>2.7
anti-folding intensity	kgf/cm <sup>2</sup>	1400
linear expanding coefficient	× 10 <sup>-6</sup> mm/°C	<8
dielectric coefficient		<7.5
dielectric dissipation factor	× 10 <sup>-4</sup>	<8
volume resistivity	Ω • cm	>10 <sup>12</sup>
breaking down intensity	kv • mm	20

## Chemistry ingredient of the ceramic material used for production of SK9CP20

chemistry ingredient	Weight percentage wt%
SiO <sub>2</sub>	57.5~58.5
Al <sub>2</sub> O <sub>3</sub>	3.7~4.7
Fe <sub>2</sub> O <sub>3</sub>	<0.15
MgO	27.5~29.5
BaO	7.5~8.5
cauterant	<0.8
R <sub>2</sub> O	<0.3

## Material ingredient of the electric conducting lug used for production of SK9CP20

testing item	chemistry ingredient %					
	GB5233-1985					
	Cu	P	Pb	Fe	Zn	Sn
15579	remains	0.1~0.25	≤0.02	≤0.05	/	6~7