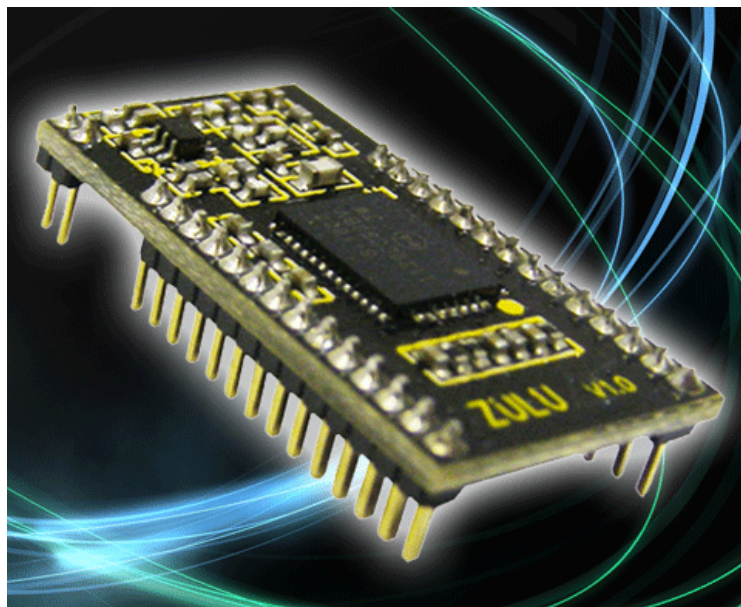


ZULU Radio MODEM Module

Features

- Intelligent RF Modem Module
- Serial Data Interface with Handshake
- Host Data Rates up to 38,400 Baud
- RF Data Rates to 115Kbps
- Range up to 2Km
- Minimal external components
- Direct Led Drive Shows Data Flow
- 8 User Selectable Channels
- Secure Data Protocol
- Ultra Low Power 2.4 - 3.6V Operation
- CE Compliant for Licence Free Use
- 868MHz multi channel operation
- 100mW Transmit Power (+20dBm)
- Receiver Sensitivity -121dBm



Applications

- Remote networking
- USB/RS232 cable replacement
- Remote data log
- Meter reading

Description

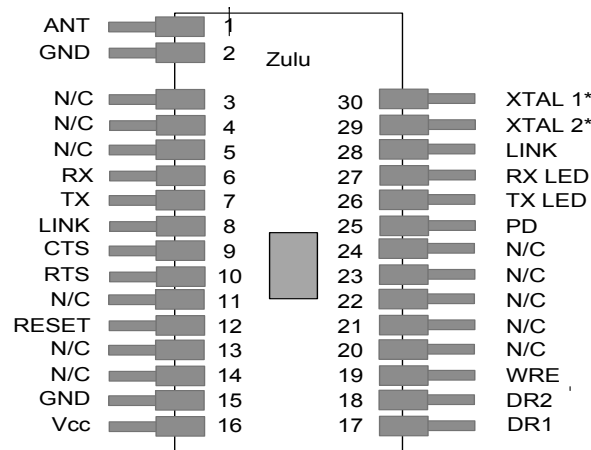
The ZULU modem module is a highly integrated RF Modem and intelligent controller with simple interface. The ZULU modem can achieve a wireless serial data link at up to 38K4bps over a 2Km range. Range may be further extended with suitable antenna.

The user interface is standard RS232, operating at low voltage. All RF operation is automatically controlled (with error checking etc) so the ZULU can be treated as a simple communications device. Possible applications include one-to-one and multi-node wireless links in applications including car and building security, EPOS, inventory tracking, remote industrial process monitoring and computer networking. Because of their small size and low power requirements these modules are ideal for use in portable, battery-powered applications such as hand-held terminals.

Ordering Information

| Part No | Description |
|--------------|---------------------------------------|
| ZULU-M868 | Radio Modem Module DIP Package 868MHz |
| ZULU-M868-SO | Radio Modem Module SMT Package 868MHz |

Connections



Pin Description

| Pin No | Name | Direction | Description |
|-----------------------|----------|-----------|---|
| 1 | ANT | In | Antenna input / Output 50ohm impedance |
| 2, 15 | GND | In | Connect to ground |
| 3-5, 11, 13-14, 20-24 | N/C | N/A | Unused leave disconnected. |
| 6 | RX | In | (Low Level) RS232 data in |
| 7 | TX | Out | (Low Level) RS232 data out |
| 8 | LINK | In | Connect to LINK on pin 28 |
| 9 | CTS | Out | (Low level) RS232 CTS |
| 10 | RTS | In | (Low level) RS232 RTS |
| 12 | RESET | In | Device reset input (Tie high via 10K resistor) |
| 16 | Vcc | In | +2.2 - +3.6v |
| 17-18 | DR1-DR2 | In | Host data rate selection. |
| 19 | WRE | In | Do not connect - unused. |
| 25 | PD | In | Power down mode. Take low to enter 'sleep' mode |
| 26 | TX LED | Out | RF TX LED indicator |
| 27 | RX LED | Out | RF RX LED indicator |
| 28 | LINK | Out | Connect to LINK on Pin 8 |
| 29-30* | XTAL1-2* | In* | These pins are provided as legacy to ensure compatibility with older ZULU modules |

Notes on compatibility with earlier ZULU modules.

ZULU hardware compatible with all ZULU and previous versions, however it cannot communicate with ZULU R1.1 firmware or earlier. The ZULU-2 is also 100% backward compatible with ZULU R1.4 and later when Unit ID (R7) is set to the correct value.

Check the configuration set-up for new features and any changes to defaults.

Connections operational description

Serial Data Format

Baud Rate: Defined using DR1 and DR2 Pins
Data Bits: 8
Parity: None
Stop Bits: 1
Flow Control: Hardware CTS / RTS

RX, TX

These pins are for data input/output. Data is transmitted and received at the low voltage level (dependent on the Vcc being used). Compatible with LCTTL / LVCMOS

CTS, RTS

Clear To Send (CTS) and Request To Send (RTS) are as RS232 standard data flow control used. However they operate at the ZULU modem modules low level Vcc (3V)

If no handshaking is required, RTS may be pulled low. However beware of data overrun errors when transmitting streams of data longer than the data buffer size (57bytes).

RESET

Connection to GND resets the module. The ZULU modem module starts when this input is taken from GND to Vcc. Normal operation: connect to Vcc through a 10Kohm resistor.

DR1 - DR2

These inputs define the host interface baud rate. They are read only when the RESET pin goes high. It is good practice to operate the host interface at half the speed of the RF data rate.

Note: Baud rate can also be configured in using the built config-mode. See duration page 6.

| DR1 | DR2 | Host Baud Rate |
|-------------------|-------------------|----------------|
| Vcc / Unconnected | Vcc / Unconnected | 4,800 |
| Vcc / Unconnected | GND | 9,600 |
| GND | Vcc / Unconnected | 19,200 |
| GND | GND | 38,400 |

PD

Enables 'Sleep' mode when connected to ground. For normal operation connect to Vcc. No RF packets will be received by the module when in sleep mode.

WRE

No longer used - leave unconnected.

Tx/Rx LED

Direct LED drive which operates whenever there is RF activity.

XTAL1, XTAL2

The ZULU modem module requires a 30MHz drive crystal to be connected between XTAL1-2.

Crystal accuracy and board layout is very important - minimise track lengths and ensure that if you are designing a multiple products using the ZULU modem module, all crystal layouts are identical.

Crystal spec: 30MHz ,+/-10ppm, ~20pF. Such as FEC 184-2247.

Operation Overview

The ZULU modem module provides a simple interface to the host controller. It handles all RF data communications automatically and without any requirement from the user (RF packetising, preamble, encoding, CRC check etc).

With this powerful high-speed radio link, the following networks can be realised:

Networking

One-to-One; For point to point data communication

One-to-Many/Broadcast; A network consisting a master and many slaves (all receivers have the same address)

Many-to-One; Where all transmitters with different addresses send to a single receiver address.

Note: Because each ZULU modem module can be given a unique address, multiple ZULU networks can co-exist in the same area. This type of operation requires clear timing between transmissions or corruption of packets can occur.

Addressing Networks

Each ZULU modem module has a generic pre-configured default address (7F7F7F). This can be modified during configuration. When data received via RF it is examined and the address header embedded within it is compared with its address. Only data received with matching address will be processed and output to the host, all other data will be discarded.

When sending data, the ZULU modem module has a default destination address set to 7F7F7F, this can be user configured.

By setting the two addresses appropriately the above network types can be easily achieved.

Operating Modes

Configuration Mode: In configuration mode the ZULU modem module can receive commands to set internal registers to define its eventual operation. In this mode the ZULU modem module is 'Offline' and cannot send or receive RF data.

Normal Operation: The ZULU modem module is 'Online' automatically transmitting and receiving data from its serial interface across its RF network.

Acknowledge Secure Mode : In this mode each time a ZULU modem module transmits an RF packet, an additional 'packet ID' is added. This ID is a rolling verification counter to receiving ZULU modem modules.

Any correctly addressed receiving ZULU modem module replies with an RF acknowledgment also containing the 'packet ID'. If the transmitting ZULU fails to receive the expected acknowledgement it will transmit the packet again (up to 10 times).

Handshaking

The ZULU modem module required the handshaking (RTS/CTS) to communicate with its host interface.

Note: If you do not intend to use handshaking, it is possible to tie the CTS pin to GND and use the modules without. In this configuration the ZULU modem module will send all data in its buffer after a 10ms timeout. Up to 57bytes can be buffered before data is lost. A minimum of 15ms should be allowed before new data is sent to the module after each packet. This is not a recommended method of operation.

Configuration Mode (offline)

Commands can be set using a standard terminal program or by sending the relevant ASCII characters.
Each command must be followed by the Carriage Return <CR> or 'Enter' except "++"

Note: All commands are entered in upper case

| Command | Description | Response from ZULU |
|---------|--|---|
| +++ | Enter Configuration Mode Note: This command must be sent as a string with no characters in front or behind. This is to ensure that the +++ is not mistakenly received in mid-data. | ZULU responds with status info |
| ? | Retrieve the current register values | ZULU responds with all register values |
| F | Pre-configured factory defaults; R1=7F7F7F R2=7F7F7F R3 = Ch2 (869.450MHz) R4 = 7 (+20dBm) R5 = 1 (19K2) | 'OK' |
| H | Help | Brief description of commands available |
| P | Ping Mode This sends a ping request . On receiving, the recipient ZULU Modem will respond with its address and the level of RSSI (Received Signal Strength) The Ping command is continuously repeated every 1 second until any command or character is entered. | The originating ZULU modem module will respond with the recipient ZULU modems' address. eg. Received from 7F7F7F (D5) Where 7F7F7F = the recipient address D5= RSSI RSSI Is a hex value corresponding to the received signal strength Min = 20hex Max =E0hex |
| S | Save Configuration | 'SAVED' |
| Q | Exit configuration mode and return to | No response |

Register Values (Configuration Mode)

Set a register:

To set a register, type 'R#=#' where # is the register number (1-6) and x is the value to set.

For example, to set the RF channel to 3 type : R3=3<CR>

(Where <CR> is carriage return or enter on the keyboard)

| Register | Value Range | Description | Example |
|----------|---|--|--|
| R1 | 0000 - FFFFFFFF (24 bit address) Default: 7F7F7F | Sets the recipient ZULU modem module address | R1=000100 (Data sent to ZULU Modem module with address 000100) |
| R2 | 0000 - FFFFFFFF (24 bit address) Default: 7F7F7F | Set ZULU modem module address | R2=F00100 (Data sent is from ZULU modem module with address F00100) |
| R3 | CH0 to CH4 | Sets the RF channel selection page 7. | R3=2 (Transmit on channel 2) |
| R4 | 0 = +1dBm 1 = +2dBm 2 = +5dBm 3 = +8dBm 4 = +11dBm 5 = +14dBm 6 = +17dBm 7 = +20dBm | Set the RF transmit power output* | R4=7 (sets transmit power to max)* |
| R5 | 0 = 9,600 1 = 19,200 2 = 28,800 3 = 56,000 4 = 115,200 | Set the RF baud rate* | R5=3 (sets the RF data rate to 56Kbps) |
| R6 | 0 = Off 1 = On | (Acknowledge) Secure mode enable | R6=1 (Secure Mode on) |
| R7 | 0-FF (hex) Default = D4 | Unique system identifier | R7=A3 Identifier set to A3. |
| R8 | 0 = 4800 1 = 9600 2 = 14400 3 = 19200 4 = 28800 5 = 38400 6 = 56000 7 = 57600 | Host baud rate - software override. FF - uses DR1 and DR1 pins. | R8=3 Baud rate set to 19K2 |
| R9 | 0 or 1 | Data whitening enable | R9=1 Enable |
| R0 | 00 or 01 | OTA Enable Over the air configuration enable | R0=1 Enable |

Using Configuration Mode

Baud rates:

It is possible to set both host and RF baud rate via configuration mode. The RF Baud rate should always be twice the host baud rate for best operation.

Secure mode

See "Operating Modes" Page 4

Unique system identifier

Adds a unique identifier at the RF stage. This allows unmatched data packets to be ignored without the need to decode - saving processor time and making a more efficient system when many nodes are present in one location. Systems with the same identifier will operate together. Use for multiple networks in one location.

Do not use addresses: FF, AA or 55

OTA - Over the air configuration

It is possible to have a remote node enter configuration mode and change that node's register settings by sending it the unique code <918273> (including the <>).

After entering OTA mode - all subsequent communications must be sent as macros and will need to include the carriage return <LF>

Examples:

| Send: | Response: | Send: | Response: | Send: | Response: |
|----------|--|-------|--|--|--------------------------------------|
| <918273> | 7F7F7F 7F7F7F 02 00 03 00 D4 01 01 01 01 | ?<LF> | 7F7F7F 7F7F7F 02 00 03 00 D4 01 01 01 01 | R4=05<LF> R5=02<LF> Q<LF> S<LF> | OK OK NONE NONE |

IMPORTANT Notes:

1. In OTA mode all values are entered in hex and sent as ASCII. Registers must be set in multiples of two characters - ie to set register 6 you must send 06 - as above examples show.
2. Changes made in OTA mode will be lost if not saved.
3. OTA mode cannot be used in conjunction with acknowledge secure mode.

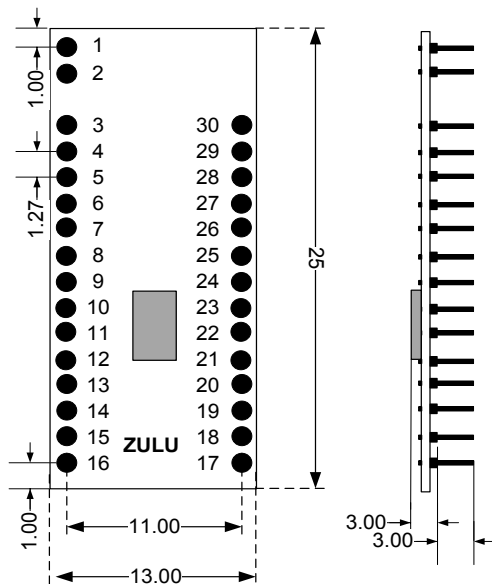
RF Channel Selection

The EU standard sets maximum power transmission limits dependent on frequency, bandwidth and application. Please check the relevant standards are being met when implementing your Application. A rough guidance applicable to the ZULU channel numbers is given below

| Channel Number | Frequency Centre (MHz) | EU Power Allowance mW / dBm | Notes |
|----------------|------------------------|-----------------------------|---------------------------------|
| 0 | 868.400 | 25 / 14 | Applicable standard - EN300-220 |
| 1 | 868.900 | 25 / 14 | |
| 2 | 869.450 | 100 / 20 | |
| 3 | 869.600 | 100 / 20 | |
| 4 | 869.800 | 25 / 14 | |

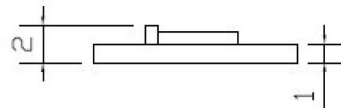
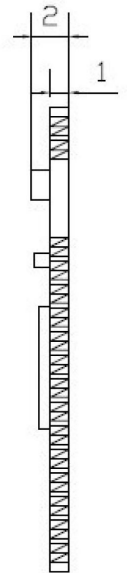
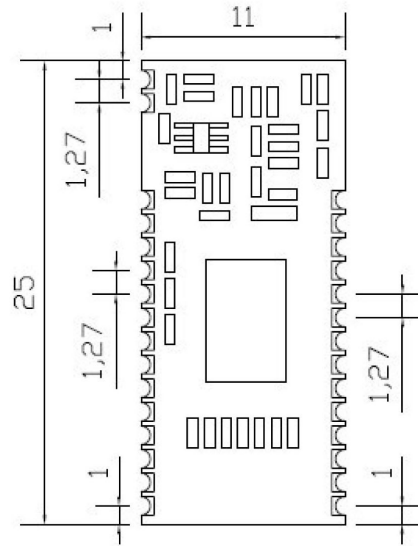
Mechanical Dimensions

PDIP version



- Notes
1. Pins 1.27mm pitch
 2. Pin Dims 0.4mm sq
 3. All dims in mm

SMT Version



All units in mm

Range

The antenna choice and position affects controls the system range. Keep the antenna clear of any large metal components in the system. The best position by far, is protruding vertically from the top of the product. This is often not desirable for practical reasons and thus a compromise may be needed. Note that the space around the antenna is as important as the antenna itself. All radio systems are dependent on a radio signal being received through airspace.

The range quoted is the optimal in direct line of sight without obstacles and in good atmospheric conditions.

Range is affected by many things, for example local environmental conditions, atmospheric conditions, interference from other radio transmitters. For evaluating the local environment please see our RF meter (DS006)

In the worst case, range quoted may be drastically reduced.

Technical Specifications

Absolute Maximums:

Temperature Range: Storage –50 to +125°C.

Weight: SMT version 7grams, DIP Part 13grams

| Parameter | Min | Max | Units |
|--------------------------------|-----|-----------|-------|
| Voltage on any Input | | 5.8 | V |
| | | Vcc + 3.6 | V |
| Max Input power (thro Antenna) | | +10 | dBm |

DC Characteristics

| Parameter | Min | Typical | Max | Units |
|----------------------------------|-----|---------|-----|-------|
| Supply voltage | 2.4 | 3 | 3.6 | V |
| Operating Temperature | -40 | | +85 | °C |
| ZULU Tx supply current: | | | | |
| When transmitting (At max power) | | 85 | | mA |
| When sleeping | | 1 | | uA |
| ZULU Rx Supply Current: | | | | |
| When Receiving | | 18.5 | | mA |
| When sleeping | | 1 | | uA |

RF Characteristics

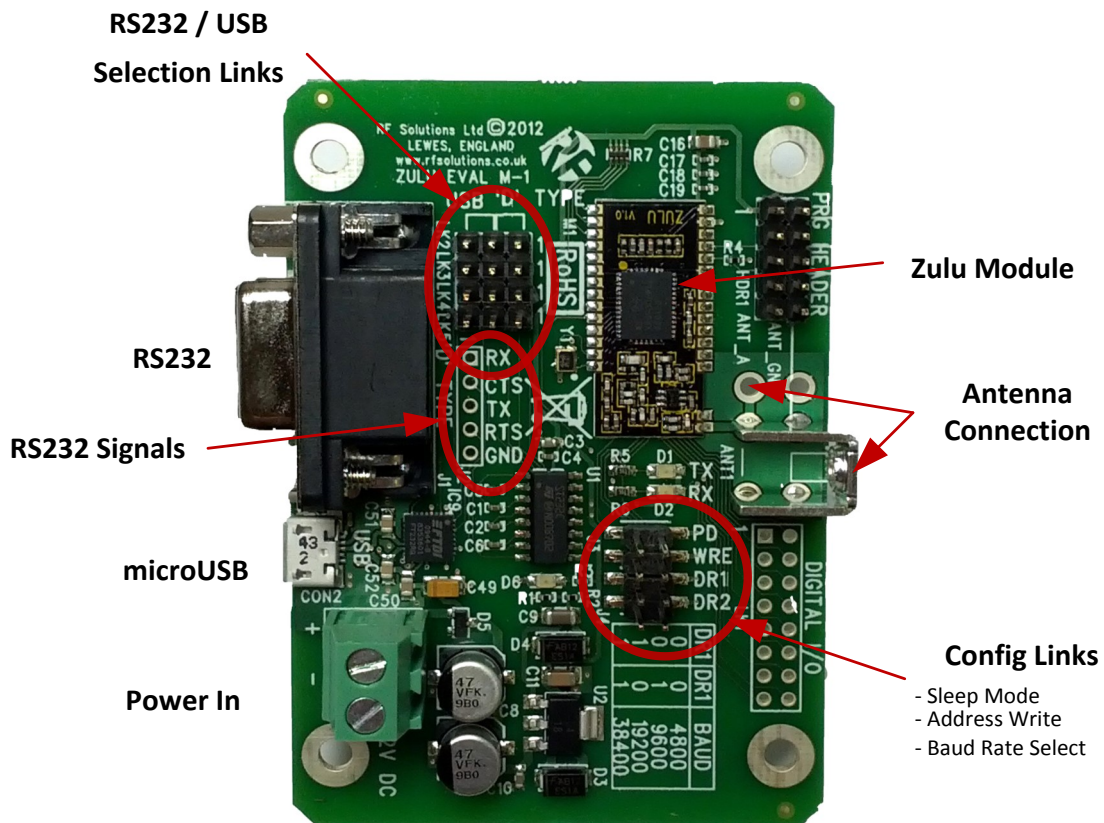
| Parameter | Min | Typical | Max | Units |
|--|---------------|---------|---------|-------|
| Operating frequency—see freq channel setting | 868 | | 870 | MHz |
| Operating temperature | -40 | | +85 | °C |
| Band width per channel | | 100 | | KHz |
| Deviation | | 45 | | KHz |
| ZULU Tx MAX output power | | | +20 | dBm |
| ZULU Tx—Rx FSK Raw RF data rate | 9.6 | | 115,200 | Kbps |
| ZULU Rx sensitivity | -102 @115K | | -109 | dBm |

ZULU Modem Evaluation Board

The ZULU EVAL Board provides a ready made platform which can be used to demonstrate the capabilities of ZULU modem modules providing ready made RS232 and USB modem solutions.

Features

- Direct Connection to RS232 / USB
- 9-12Vdc Power in Screw Terminal
- LED Indication Transmit / Receiver
- User Configuration Links



Ordering Information

| Part No | Description |
|----------------|--------------------------------|
| ZULU-EVAL-M868 | ZULU Modem Eval Board 868MHz |
| PSU-12V100MAUK | Plugtop Power Supply 12V 100mA |

EVAL Board Configuration

Power Requirements: 9-15Vdc

Weight: 27grams, Dimensions:

USB / D Links (LK2,3,4,5)

For USB connect all Links from Centre to 'USB' Side

For RS232 connect all Links from Centre to 'RS232' Side

| Link Ref | Name | When Fitted | When Open |
|----------|----------------|--|--|
| PD | Power Down | Modem is Placed in Sleep Mode | Normal Operation |
| DR1 DR2 | Sets Host Baud | DR1 DR2 Open Open Open Fitted Fitted Open Fitted Fitted | Baud Rate: 4800 9600 19200 38400 |

Antenna Connector

The connector is a 4mm Screw Thread (Part NO: SCRTM4RA)

Power Connection

Power is required for RS232 comms, USB connection provides power automatically—note that USB port cannot supply adequate power for full +20dBm transmission! Additional power is needed for maximum range!

Host Terminal Software

Connection to Host is via the micro-USB Cable or RS232 Cable.

Any Terminal emulation program can interface the Eval board, one we have found to be easy to use and powerful is 'Terminal'

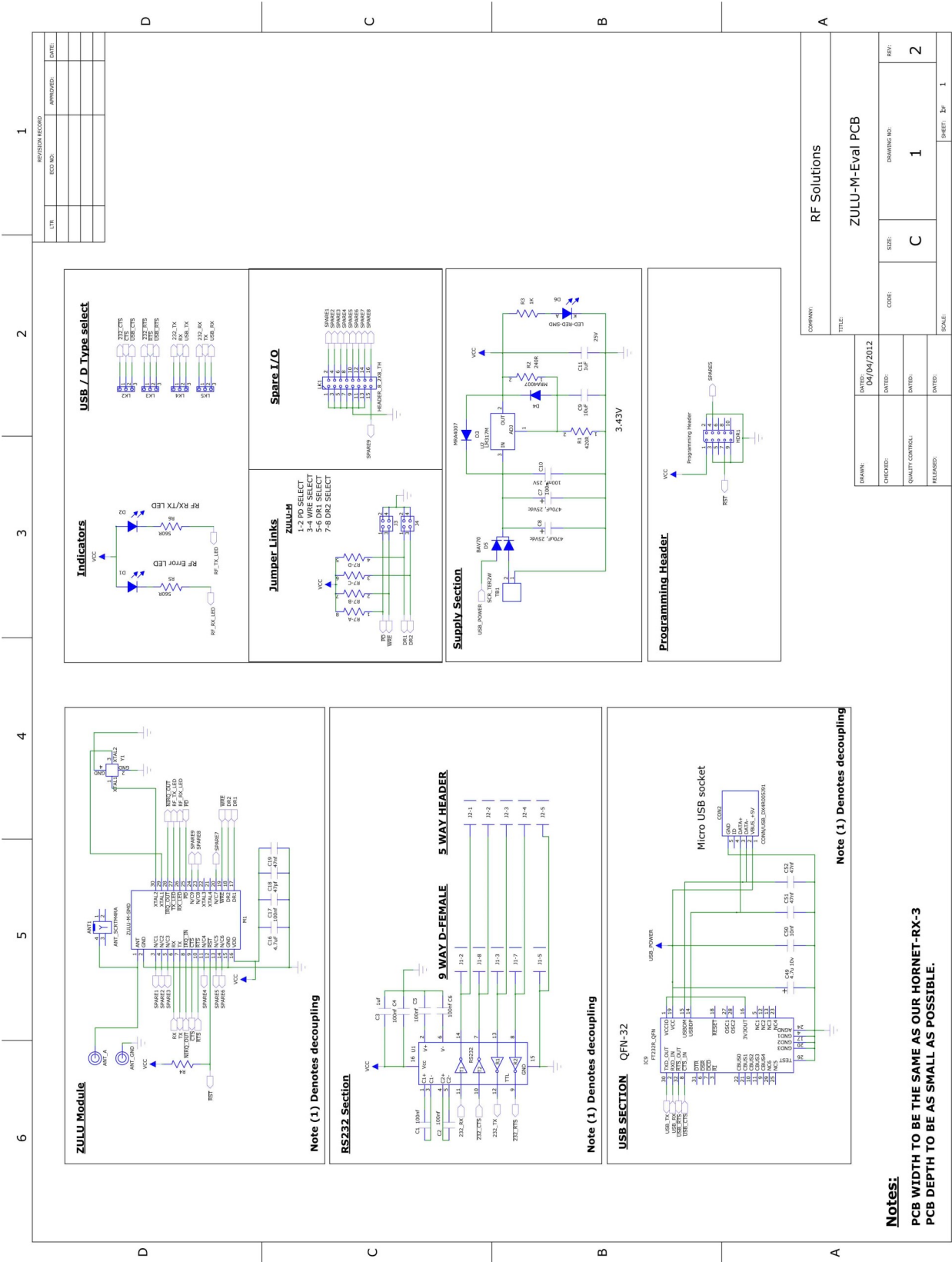
This can be downloaded from : <https://sites.google.com/site/terminalbpp/>

<https://sites.google.com/site/terminalbpp/>

Notes for Optimising Range

1. Use max RF Transmit power (set Register R4 = 7)
2. Use the slowest RF comms Rate (set Register R5 = 0)
3. Power the Eval boards from 12V (don't rely on the USB power)
4. Consider upgrading the antennas to models with gain.
5. Enable data whitening.

ZULU Modem Evaluation Board Schematic



Reader Response

It is our intention to provide you with the best documentation possible to ensure successful use of your RF Solutions product.

If you wish to provide your comments on organization, clarity, subject matter, and ways in which our documentation can better serve you, please email us your comments to the Technical Publications Manager

Application:

Would you like a reply? Y / N

Datasheet: DS-ZULU Rev7

Questions:

1. What are the best features of this document?
2. How does this document meet your hardware and software development needs?
3. Do you find the organization of this document easy to follow? If not, why?
4. What additions to the document do you think would enhance the structure and subject?
5. What deletions from the document could be made without affecting the usefulness?
6. Is there any incorrect or misleading information (what and where)?

RF Solutions Ltd. Recycling Notice

Meets the following EC Directives:

DO NOT

Discard with normal waste, please recycle.



ROHS Directive 2002/95/EC

Specifies certain limits for hazardous substances.



WEEE Directive 2002/96/EC

Waste electrical & electronic equipment. This product must be disposed of through a licensed WEEE collection point. RF Solutions Ltd., fulfills its WEEE obligations by membership of an approved compliance scheme.

Waste Batteries and Accumulators

Directive 2006/66/EC

Where batteries are fitted, before recycling the product, the batteries must be removed and disposed of at a licensed collection point.

Environment Agency producer registration number: WEE/JB0104WV.

Disclaimer:

Whilst the information in this document is believed to be correct at the time of issue, RF Solutions Ltd does not accept any liability whatsoever for its accuracy, adequacy or completeness. No express or implied warranty or representation is given relating to the information contained in this document. RF Solutions Ltd reserves the right to make changes and improvements to the product(s) described herein without notice. Buyers and other users should determine for themselves the suitability of any such information or products for their own particular requirements or specification(s). RF Solutions Ltd shall not be liable for any loss or damage caused as a result of user's own determination of how to deploy or use RF Solutions Ltd's products. Use of RF Solutions Ltd products or components in life support and/or safety applications is not authorised except with express written approval. No licences are created, implicitly or otherwise, under any of RF Solutions Ltd's intellectual property rights. Liability for loss or damage resulting or caused by reliance on the information contained herein or from the use of the product (including liability resulting from negligence or where RF Solutions Ltd was aware of the possibility of such loss or damage arising) is excluded. This will not operate to limit or restrict RF Solutions Ltd's liability for death or personal injury resulting from its negligence.