

Panel Mount Pushbutton

Single Pole E6 F6 series



Features

- Choice of Momentary, Push-Pull (reset) and Cheat Interlock
- Long life coil spring snap action mechanism
- Agency approved extended life versions available
- Snap in mounting
- ENEC available on select models
- **Cadmium** contacts for high load requirements

Standard Parts

0E65-00A0	0E68-00A0	0E68-30A0	0E68-40A0	0E69-00A0	0E69-30A0	0E69-40A0
0F69-00A0	0F69-30A0	0F69-65A0	0F69-66A0			

Notes:
Part numbers with a leading 0 and a trailing 0 are functionally no different than without a leading / trailing 0.

Electrical Specifications – Contact Ratings

Switch Series	According to EN61058-1		According to UL1054	
	Nominal Load	Operating Cycles	Nominal Load	Operating cycles
0E65	N/A	N/A	16 A, 125/250 VAC; 1/3 HP; 125/250 VAC	6,000 *
0E68	N/A	N/A	0.1 A 125 VAC	6,000 *
0F68	0.1(0.05) A, 125 VAC;	50,000		
0E69	N/A	N/A	10 A, 125/250 VAC; 1/3 HP, 125/250 VAC	6,000*
0F69	10(4)A, 250 VAC	50,000		

*Extended life UL versions available. Contact factory for more information. Special part number required.

Environmental and Mechanical Specifications

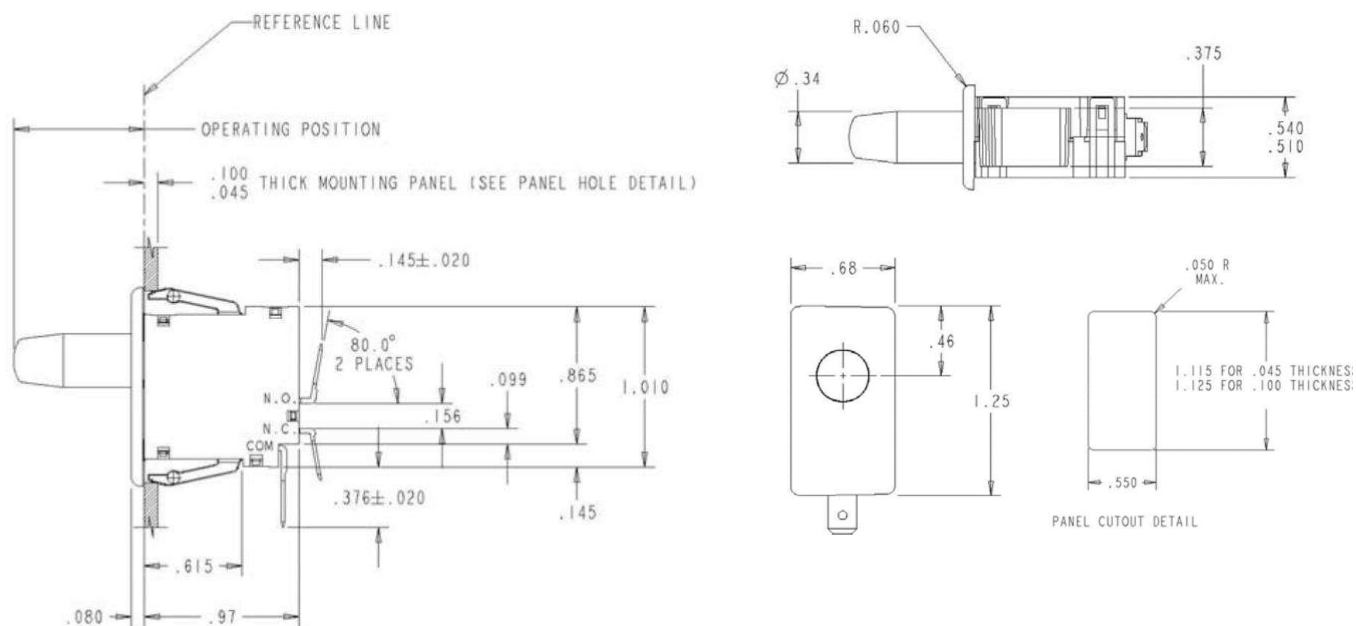
Operating force	285 – 708 grams
Temperature range	-40 °C to 85 °C
Protection class	IP40
Terminal dimensions	Up to 10 A: 4.8 mm x 0.5 mm or 4.8 mm x 0.8 mm; 16 A: 6.3 mm x 0.8 mm

Material Specifications

Case	Thermoplastic Polyester
Actuator button	Thermoplastic Acetal
Terminals	Brass (Common Ag plated)
Moving blade	Beryllium Copper
Spring	Stainless Steel
Contacts	Silver Alloy, Gold Alloy



Dimensions (mm) and terminal configurations



Button details

Actuator (function)

