

Series Kraftform Micro



**EAN/GTIN:** 4013288032362  
**Part no.:** 05118122001  
**Article no.:** 2069 Micro

**Dimension:** 157x13x13 mm  
**Weight:** 20 g  
**Country of origin:** CZ  
**Customs tariff number:** 82054000



- Kraftform Micro nutsetter for hex head screws
- Multi-component Kraftform Micro handle for fast and ergonomic screwdriving
- Anti-roll feature and swivel cap for rapid twisting
- The Wera Black Point tip offers an exact fit and optimum corrosion protection
- E.g. for electricians, opticians, precision mechanics, jewellers or IT hardware fitters

High quality Wera Micro nutsetter for precision mechanical work. Rapid twisting is possible by fixing the hand on the twist cap and using the fast-turning zone just below it. This makes time-consuming grip adjustments unnecessary. Power zone with integrated soft zones ensure the transfer of higher tightening and loosening torque. Precision zone for the right angle for adjustment work.

**Weblink**

[http://products.wera.de/en/screwdrivers\\_series\\_kraftform\\_micro\\_2069\\_micro.html](http://products.wera.de/en/screwdrivers_series_kraftform_micro_2069_micro.html)

Wera - 2069 Micro  
05118122001 - 4013288032362

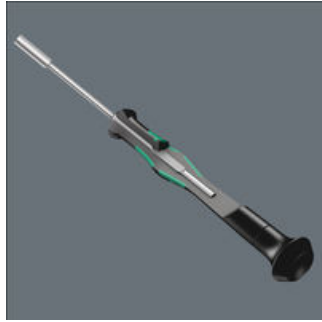
Wera Werkzeuge GmbH  
Korzter Straße 21-25  
D-42349 Wuppertal  
Tel: +49 (0)2 02 / 40 45-0  
E-Mail: [info@wera.de](mailto:info@wera.de)

Series Kraftform Micro

Kraftform Micro Handle



Screwdriving jobs in electrical and precision engineering applications are often tedious and time-consuming. We learned from users what is important for them: working speeds, torque, precision – and we then focused particularly on these issues.



Multi-component screwdriver handle for ergonomic working.

The refined screwdriver for electronics technicians



The Kraftform Micro, with its three zones and their specific arrangement, satisfies these requirements perfectly. The free-turning cap that provides support for the hand works with these advantages, enabling quick and easy precision work.

The precision zone



The precision zone directly above the blade gives the user a better feel for the right rotation angle during fine adjustment work.

The power zone



The power zone has integrated soft zones near the blade tip to ensure high torque transfer for loosening or tightening screws without losing contact with the screw.

The fast-turning zone



The fast-turning zone just below the rotating cap allows rapid twisting.

Applications



Indispensable for many users, including electronics technicians, opticians, precision engineers, jewellers, EDP hardware fitters and model-makers.

Weblink







[http://products.wera.de/en/screwdrivers\\_series\\_kraftform\\_micro\\_2069\\_micro.html](http://products.wera.de/en/screwdrivers_series_kraftform_micro_2069_micro.html)

Wera - 2069 Micro  
05118122001 - 4013288032362

Wera Werkzeuge GmbH  
Korzter Straße 21-25  
D-42349 Wuppertal  
Tel: +49 (0)2 02 / 40 45-0  
E-Mail: [info@wera.de](mailto:info@wera.de)

## Series Kraftform Micro

## More variants of this product family:

|                    |  |  |  |  |  |  |
|--------------------|---|---|---|--|---|---|
|                    | mm  | inch  | mm  | mm   | mm  | inch  |
| 05118108001        | 1.5   | -   | 60  | 97   | 5.7   | 2 3/8   |
| 05118109001        | 1.8   | -   | 60  | 97   | 5.7   | 2 3/8   |
| 05118110001        | 2.0   | -   | 60  | 97   | 5.7   | 2 3/8   |
| 05118112001        | 2.5   | -   | 60  | 97   | 5.7   | 2 3/8   |
| 05118114001        | 3.0   | -   | 60  | 97   | 5.7   | 2 3/8   |
| 05118116001        | 3.2   | -   | 60  | 97   | 5.7   | 2 3/8   |
| 05118118001        | 3.5   | -   | 60  | 97   | 5.7   | 2 3/8   |
| 05118120001        | 4.0   | -   | 60  | 97   | 5.7   | 2 3/8   |
| <b>05118122001</b> | <b>4.5</b>  | <b>-</b>  | <b>60</b>   | <b>97</b>  | <b>6.4</b>  | <b>2 3/8</b>  |
| 05118124001        | 5.0   | -   | 60  | 97   | 7.0   | 2 3/8   |
| 05118126001        | 5.5   | -   | 60  | 97   | 7.8   | 2 3/8   |
| 05345281001        | 6.0   | -   | 60  | 97   | 8.5   | 2 3/8   |
| 05118128001        | -   | 3/32  | 60  | 97   | 5.7   | 2 3/8   |
| 05118130001        | -   | 7/64  | 60  | 97   | 5.7   | 2 3/8   |
| 05118132001        | -   | 1/8   | 60  | 97   | 5.7   | 2 3/8   |
| 05118134001        | -   | 9/64  | 60  | 97   | 5.7   | 2 3/8   |
| 05118136001        | -   | 5/32"   | 60  | 97   | 5.7   | 2 3/8   |
| 05118135001        | -   | 3/16"   | 60  | 97   | 6.6   | 2 3/8   |
| 05118137001        | -   | 7/32"   | 60  | 97   | 7.8   | 2 3/8   |
| 05345282001        | -   | 1/4   | 60  | 97   | 9.0   | 2 3/8   |

## Weblink

[http://products.wera.de/en/screwdrivers\\_series\\_kraftform\\_micro\\_2069\\_micro.html](http://products.wera.de/en/screwdrivers_series_kraftform_micro_2069_micro.html)

Wera - 2069 Micro  
 05118122001 - 4013288032362

Wera Werkzeuge GmbH  
 Korzter Straße 21-25  
 D-42349 Wuppertal  
 Tel: +49 (0)2 02 / 40 45-0  
 E-Mail: info@wera.de