



Test plug adapter; for 4 mm Ø test plugs; for testing TOPJOB®S rail-mounted terminal blocks

Item No.: 2009-174



Marking

RoHS ✓
Compliant

Business data

<i>Supplier</i>	WAGO
<i>Item no.</i>	2009-174
<i>GTIN / EAN</i>	4017332074988
<i>Content</i>	1

Notes

Technical data

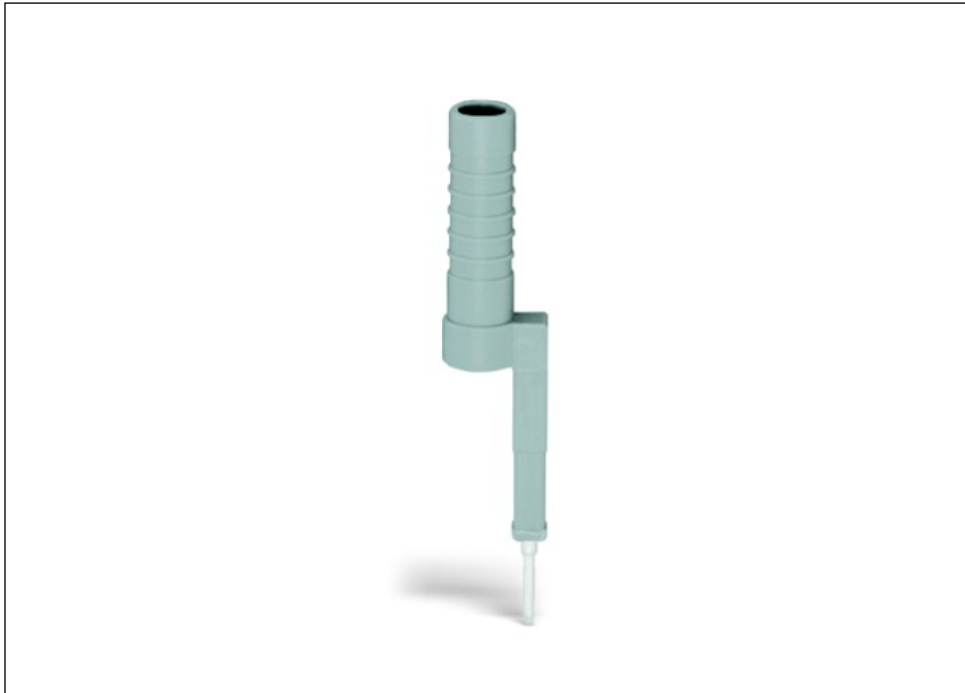
Miscellaneous

<i>Width</i>	10.15 mm / 0.4 Inch
<i>Height</i>	48.6 mm / 1.913 Inch
<i>Depth</i>	7.2 mm / 0.283 Inch
<i>Color</i>	gray
<i>Weight [g]</i>	2.5 [g]

Technical data	
<i>Product Family</i>	<i>TOPJOB® S</i>
<i>Main product function</i>	<i>Testing accessories</i>
<i>Product type</i>	<i>Accessories</i>

Images & drawings





Address

WAGO Kontakttechnik GmbH & Co. KG

Hansastr. 27

32423 Minden

Telefon: 0571/887-0

Fax: 0571/887-169

<http://www.wago.com>

© WAGO Kontakttechnik GmbH & Co. KG

Technische Änderungen und Irrtümer vorbehalten.