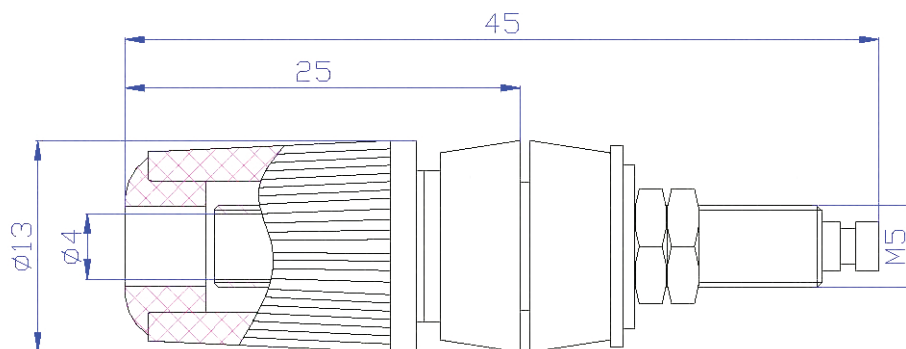


# 4mm Grey Test Sockets Solder Connection 60V 24A

Order code: **17-3270** Red

Order code: **17-3271** Black



## Typical Characteristics:

- Body material: Brass
- Insulation material: ABS
- Surface coating: Nickel plated
- Contact resistance:  $\leq 0.005\Omega$
- Insulating resistance:  $\geq 500M\Omega$
- Rated voltage/current: 30V AC-60V DC/Max. 24A

## Features:

- High reliability
- High stability
- Economical and practical