

PCB TERMINAL BLOCKS

PCB
TERMINAL
BLOCKS

INTER-
CONNECTION

FUSES &
FUSE-
HOLDERS

LEDs &
INDICATORS

MINIATURE
SWITCHES

LIMIT &
SAFETY
SWITCHES

CONTROL
PRODUCTS

INTERFACE
MODULES &
SUPPORTS

RELAY
BASES


DIN RAIL
ENCLOSURES

BATTERIES

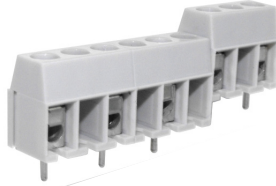
SOLAR
PANELS

TRANS-
FORMERS

10mm Pitch Standard Profile Screw Terminal Blocks

- 1 & 2 pole interlocking
- 3-12 pole solid block end stackable
- Moulded in grey UL94-V0 flame retardant PC
- Wire protector terminals
- 0.5-4.0mm² (30-14AWG) solid cable
- 0.5-2.5mm² (30-14AWG) stranded cable
- Guided pin alignment
- Captive screw
- Anti solder wicking terminals
-  approved

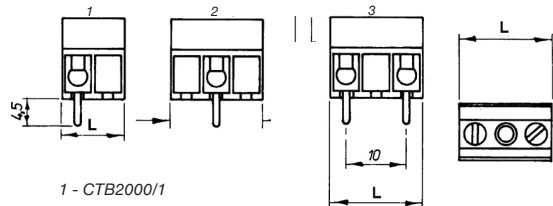
CTB2000



TYPE NO.	POLES	LENGTH
CTB2000/1	1	10mm
CTB2000/1/15	1	15mm
CTB2000/2	2	15mm
CTB2000/3	3	25mm
CTB2000/4	4	35mm
CTB2000/5	5	45mm
CTB2000/6	6	55mm
CTB2000/7	7	65mm
CTB2000/8	8	75mm
CTB2000/9	9	85mm
CTB2000/10	10	95mm
CTB2000/11	11	105mm
CTB2000/12	12	115mm

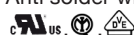
SPECIFICATION

Rating	24A/500V UL=16A/300V, VDE&IMQ=24A/750V
Dielectric strength	≥3kV
Impulse withstand voltage	6kV
Working temperature	85°C
Moulding	UL94-V0 flame retardant PC
Pin/terminal	Tinned, nickel plated brass
Wire protector	Tin plated, phosphor bronze
Screw/torque	M3 steel zinc plated, 0.5Nm
Recommended PCB hole size	ø1.3mm

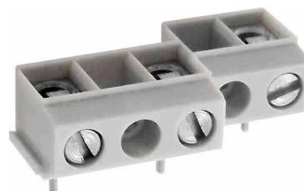


1 - CTB2000/1
2 - CTB2000/1/15
3 - CTB2000/2

10mm Pitch Standard Profile 90° Screw Terminal Blocks

- 1 & 2 pole interlocking
- 3-6 pole solid block end stackable
- Moulded in grey UL94-V0 flame retardant PC
- Wire protector terminals
- 0.5-4.0mm² (30-14AWG) solid cable
- 0.5-2.5mm² (30-14AWG) stranded cable
- Guided pin alignment
- Captive screw
- Anti solder wicking terminals
-  approved

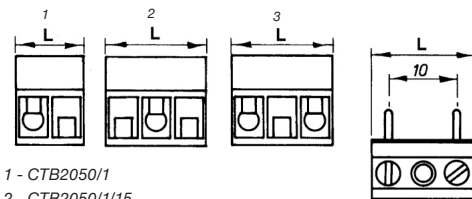
CTB2050



TYPE NO.	POLES	LENGTH
CTB2050/1	1	10mm
CTB2050/1/15	1	15mm
CTB2050/2	2	15mm
CTB2050/3	3	25mm
CTB2050/4	4	35mm
CTB2050/5	5	45mm
CTB2050/6	6	55mm

SPECIFICATION

Rating	24A/500V UL=16A/300V, VDE&IMQ=24A/750V
Dielectric strength	≥3kV
Impulse withstand voltage	6kV
Working temperature	85°C
Moulding	UL94-V0 flame retardant PC
Pin/terminal	Tinned, nickel plated brass
Wire protector	Tin plated, phosphor bronze
Screw/torque	M3 steel zinc plated, 0.5Nm
Recommended PCB hole size	ø1.3mm



1 - CTB2050/1
2 - CTB2050/1/15
3 - CTB2050/2