

## Feed-through header - MSTB 2,5/ 8-G-5,08 - 1759075

Please be informed that the data shown in this PDF Document is generated from our Online Catalog. Please find the complete data in the user's documentation. Our General Terms of Use for Downloads are valid (<http://phoenixcontact.com/download>)

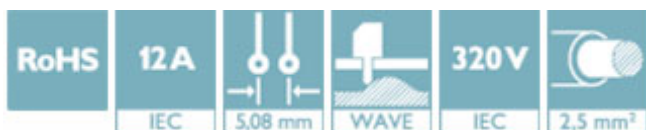
PCB headers, nominal current: 12 A, rated voltage (III/2): 320 V, number of positions: 8, pitch: 5.08 mm, color: green, contact surface: Tin, mounting: Wave soldering



The figure shows a 10-position version of the product

### Your advantages

- ✓ Maximum flexibility when it comes to device design – one header for connectors with different connection technologies
- ✓ Easy PCB replacement thanks to plug-in modules
- ✓ Well-known mounting principle allows worldwide use
- ✓ Plug-in direction parallel to the PCB
- ✓ Items that can be aligned in various pitches support flexible and space-saving PCB assembly



### Key Commercial Data

|                                      |               |
|--------------------------------------|---------------|
| Packing unit                         | 100 pc        |
| GTIN                                 |               |
| GTIN                                 | 4017918030544 |
| Weight per Piece (excluding packing) | 2.910 g       |
| Custom tariff number                 | 85366930      |
| Country of origin                    | Germany       |

### Technical data

#### Dimensions

|              |          |
|--------------|----------|
| Length [ l ] | 12 mm    |
| Width        | 40.64 mm |
| Pitch        | 5.08 mm  |
| Dimension a  | 35.56 mm |
| Width [ w ]  | 40.64 mm |
| Height [ h ] | 12.1 mm  |
| Height       | 8.6 mm   |

# Feed-through header - MSTB 2,5/ 8-G-5,08 - 1759075

## Technical data

### Dimensions

|                          |          |
|--------------------------|----------|
| Length of the solder pin | 3.5 mm   |
| Pin dimensions           | 1 x 1 mm |
| Length                   | 12 mm    |

### General

|  |               |
|--|---------------|
| Range of articles                      | MSTB 2,5/..-G |
| Insulating material group              | I             |
| Rated surge voltage (III/3)            | 4 kV          |
| Rated surge voltage (III/2)            | 4 kV          |
| Rated surge voltage (II/2)             | 4 kV          |
| Rated voltage (III/3)                  | 250 V         |
| Rated voltage (III/2)                  | 320 V         |
| Rated voltage (II/2)                   | 400 V         |
| Connection in acc. with standard       | EN-VDE        |
| Nominal current $I_N$                  | 12 A          |
| Maximum load current                   | 12 A          |
| Insulating material                    | PA            |
| Flammability rating according to UL 94 | V0            |
| Color                                  | green         |
| Number of positions                    | 8             |

### Standards and Regulations

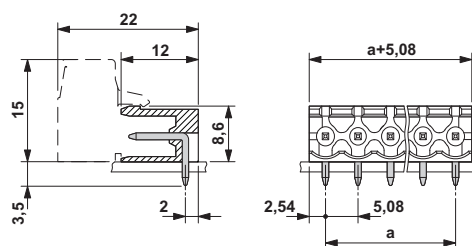
|  |        |
|--|--------|
| Connection in acc. with standard       | EN-VDE |
|  | CSA    |
| Flammability rating according to UL 94 | V0     |

### Environmental Product Compliance

|            |   |
|------------|---|
| China RoHS | Environmentally friendly use period: unlimited = EFUP-e |
|            | No hazardous substances above threshold values          |

## Drawings

Dimensional drawing



# Feed-through header - MSTB 2,5/ 8-G-5,08 - 1759075

## Classifications

### eCl@ss

|            |          |
|------------|----------|
| eCl@ss 4.0 | 272607xx |
| eCl@ss 4.1 | 27260701 |
| eCl@ss 5.0 | 27260701 |
| eCl@ss 5.1 | 27260700 |
| eCl@ss 6.0 | 27260700 |
| eCl@ss 7.0 | 27440402 |
| eCl@ss 8.0 | 27440402 |
| eCl@ss 9.0 | 27440402 |

### ETIM

|          |          |
|----------|----------|
| ETIM 3.0 | EC001121 |
| ETIM 4.0 | EC002637 |
| ETIM 5.0 | EC002637 |
| ETIM 6.0 | EC002637 |

### UNSPSC

|               |          |
|---------------|----------|
| UNSPSC 6.01   | 30211810 |
| UNSPSC 7.0901 | 39121409 |
| UNSPSC 11     | 39121409 |
| UNSPSC 12.01  | 39121409 |
| UNSPSC 13.2   | 39121409 |

## Approvals


### Approvals

#### Approvals

CSA / IEC/IEEE CB Scheme / VDE Gutachten mit Fertigungsüberwachung / EAC / cULus Recognized


#### Ex Approvals


### Approval details

|                    |   |   |       |
|--------------------|---|---|-------|
| CSA                |  | <a href="http://www.csagroup.org/services-industries/product-listing/">http://www.csagroup.org/services-industries/product-listing/</a> | 13631 |
|                    | D   | B   |       |
| Nominal voltage UN | 300 V   | 300 V   |       |
| Nominal current IN | 10 A  | 10 A  |       |


## Feed-through header - MSTB 2,5/ 8-G-5,08 - 1759075

### Approvals

|                    |   |   |                |
|--------------------|---|---|----------------|
| IECEE CB Scheme    |  | <a href="http://www.iecee.org/">http://www.iecee.org/</a> | DE1-58978-B1B2 |
| Nominal voltage UN | 250 V   |   |                |
| Nominal current IN | 12 A  |   |                |

|   |   |   |          |
|---|---|---|----------|
| VDE Gutachten mit Fertigungsüberwachung |  | <a href="http://www2.vde.com/de/Institut/Online-Service/VDE-gepruefteProdukte/Seiten/Online-Suche.aspx">http://www2.vde.com/de/Institut/Online-Service/VDE-gepruefteProdukte/Seiten/Online-Suche.aspx</a> | 40004701 |
| Nominal voltage UN                      | 250 V   |   |          |
| Nominal current IN                      | 12 A  |   |          |

|     |  |         |
|-----|--|---------|
| EAC |  | B.01742 |
|-----|--|---------|

|                    |   |   |                 |
|--------------------|---|---|-----------------|
| cULus Recognized   |  | <a href="http://database.ul.com/cgi-bin/XYV/template/LISEXT/1FRAME/index.htm">http://database.ul.com/cgi-bin/XYV/template/LISEXT/1FRAME/index.htm</a> | E60425-19931011 |
|                    | D   | B   |                 |
| Nominal voltage UN | 150 V   | 300 V   |                 |
| Nominal current IN | 15 A  | 15 A  |                 |